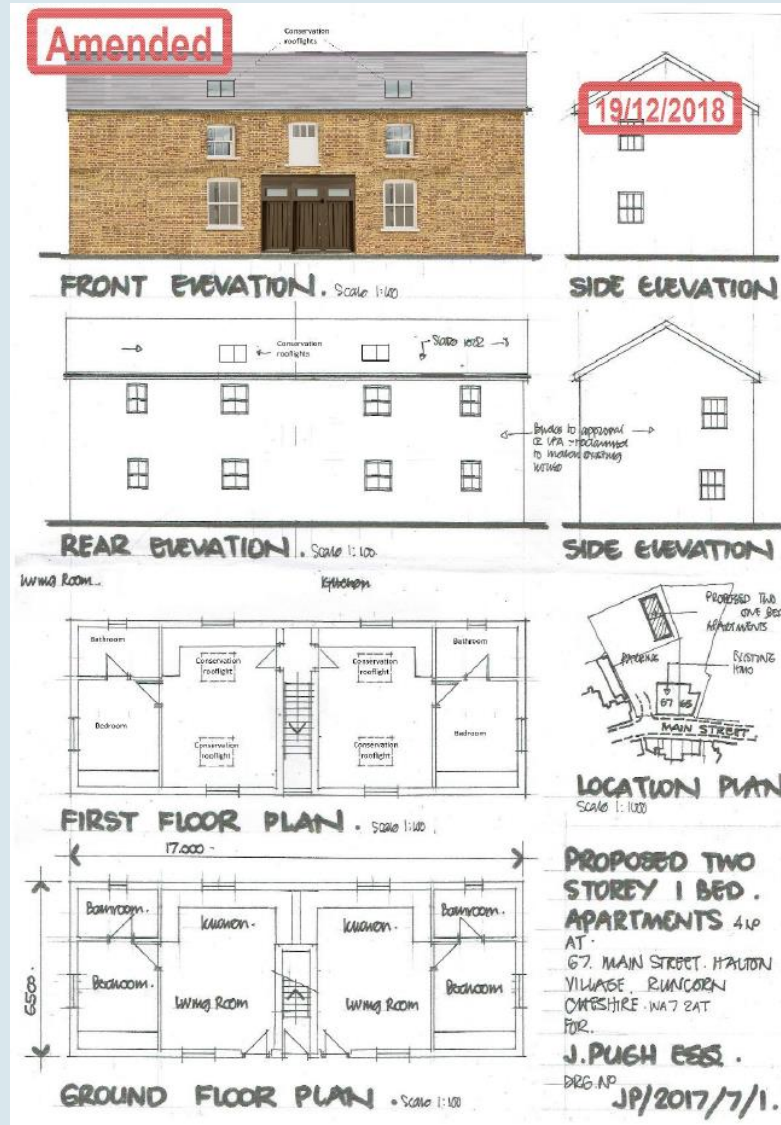
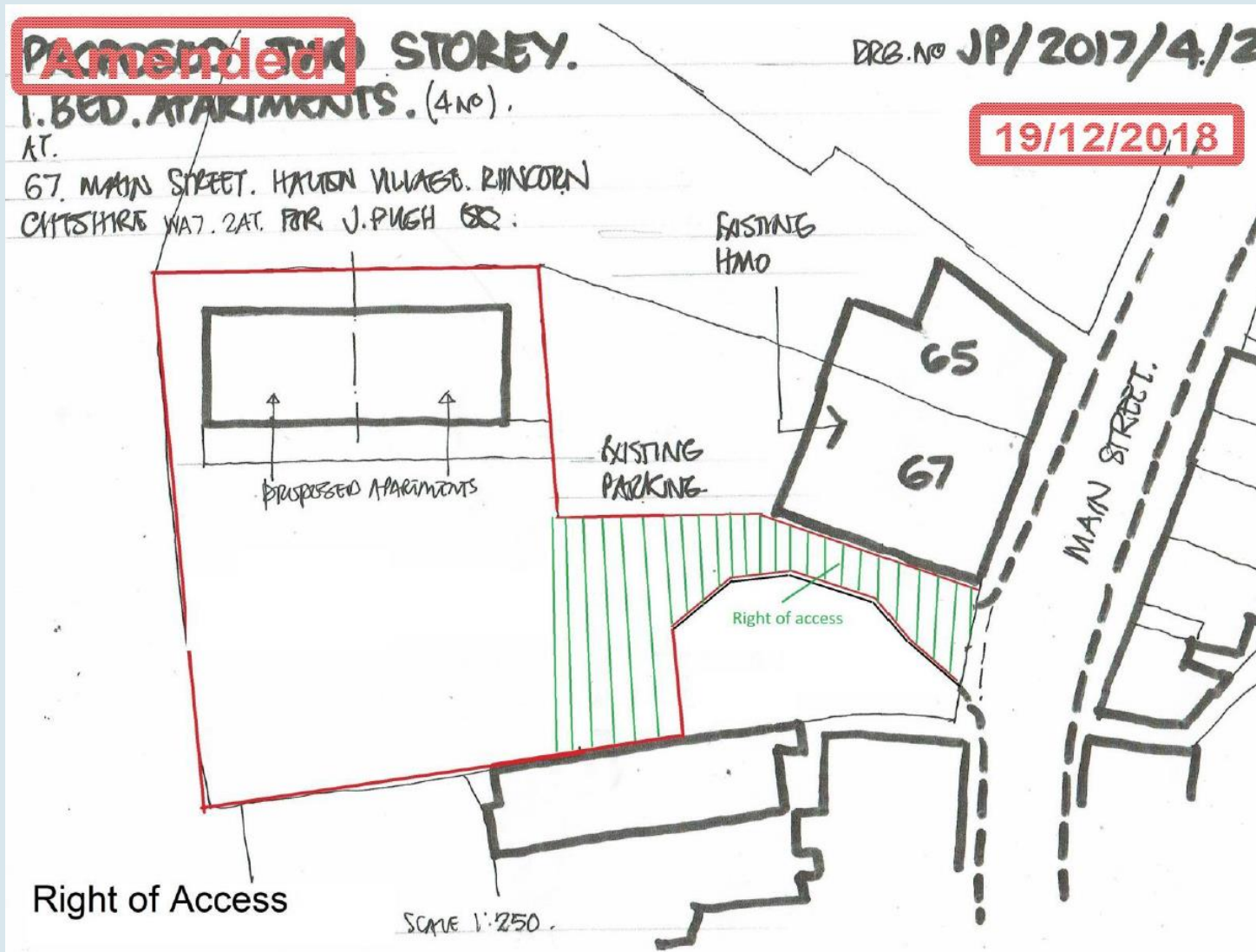


© Crown copyright and database rights [2019] Ordnance Survey 100018552



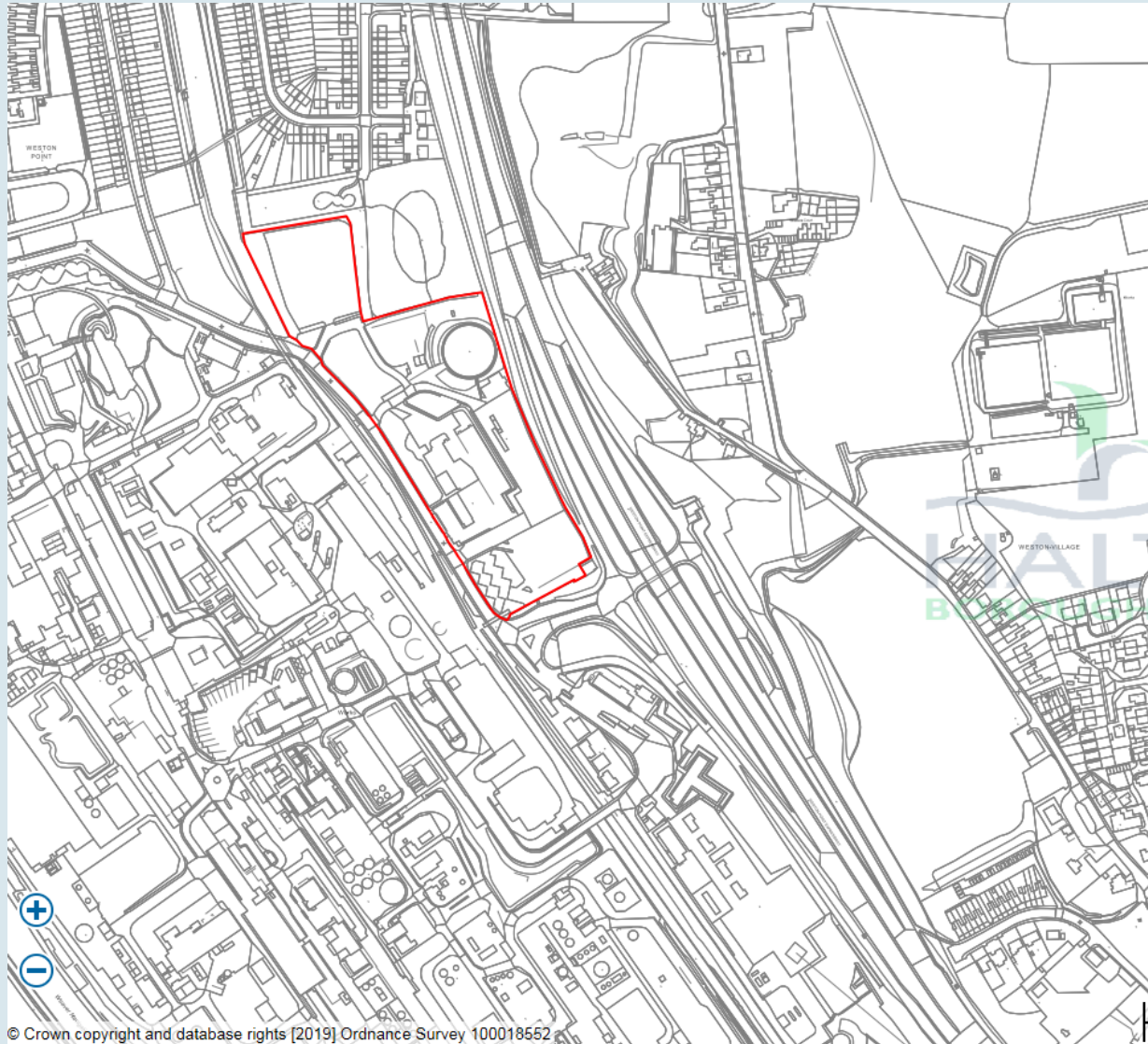






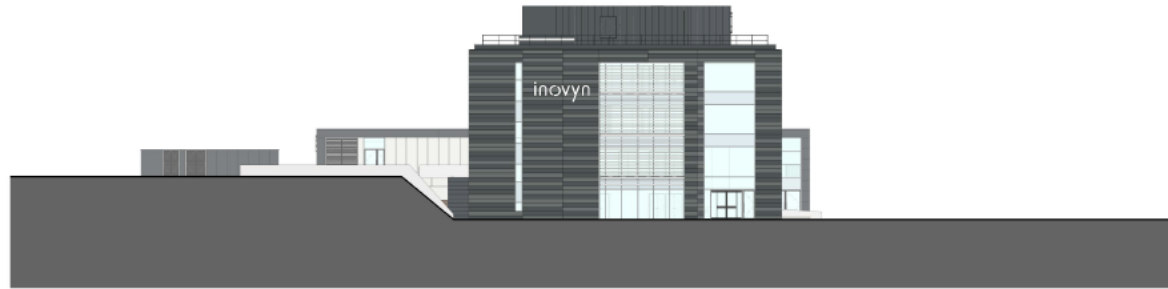
Application Number: I7/00497/FUL

Plan IE : Aerial Photograph





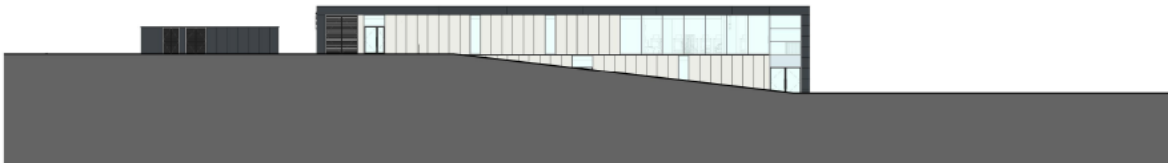




Section 1  
1:200



Section 2  
1:200



Section 3  
1:200

Site Sections

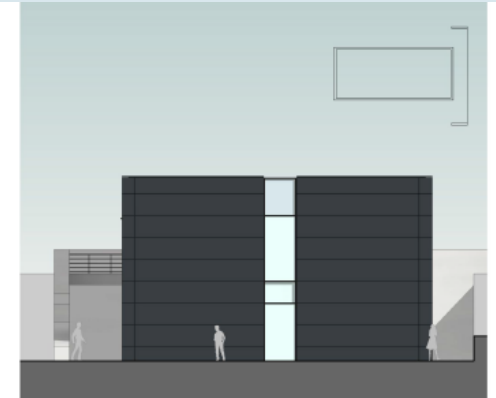




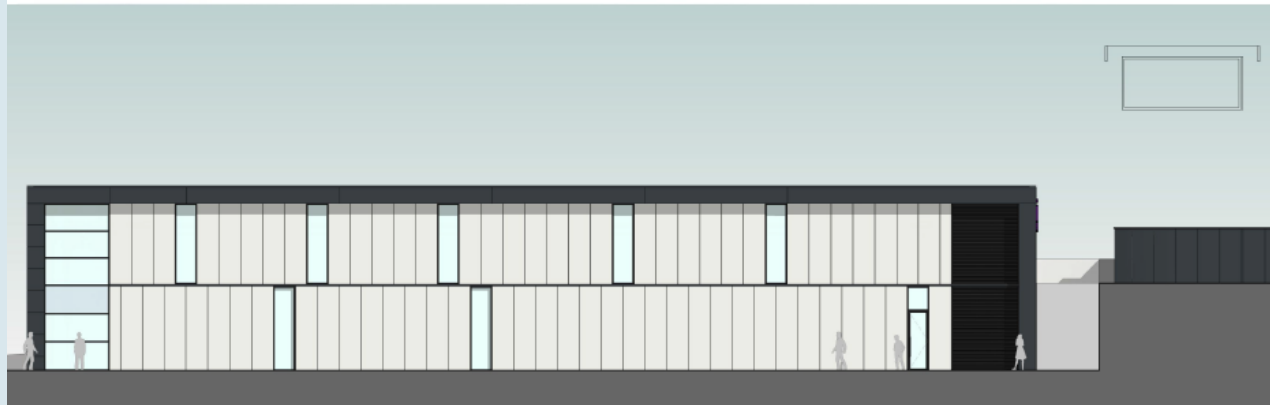




North Elevation  
1:100



West Elevation  
1:100



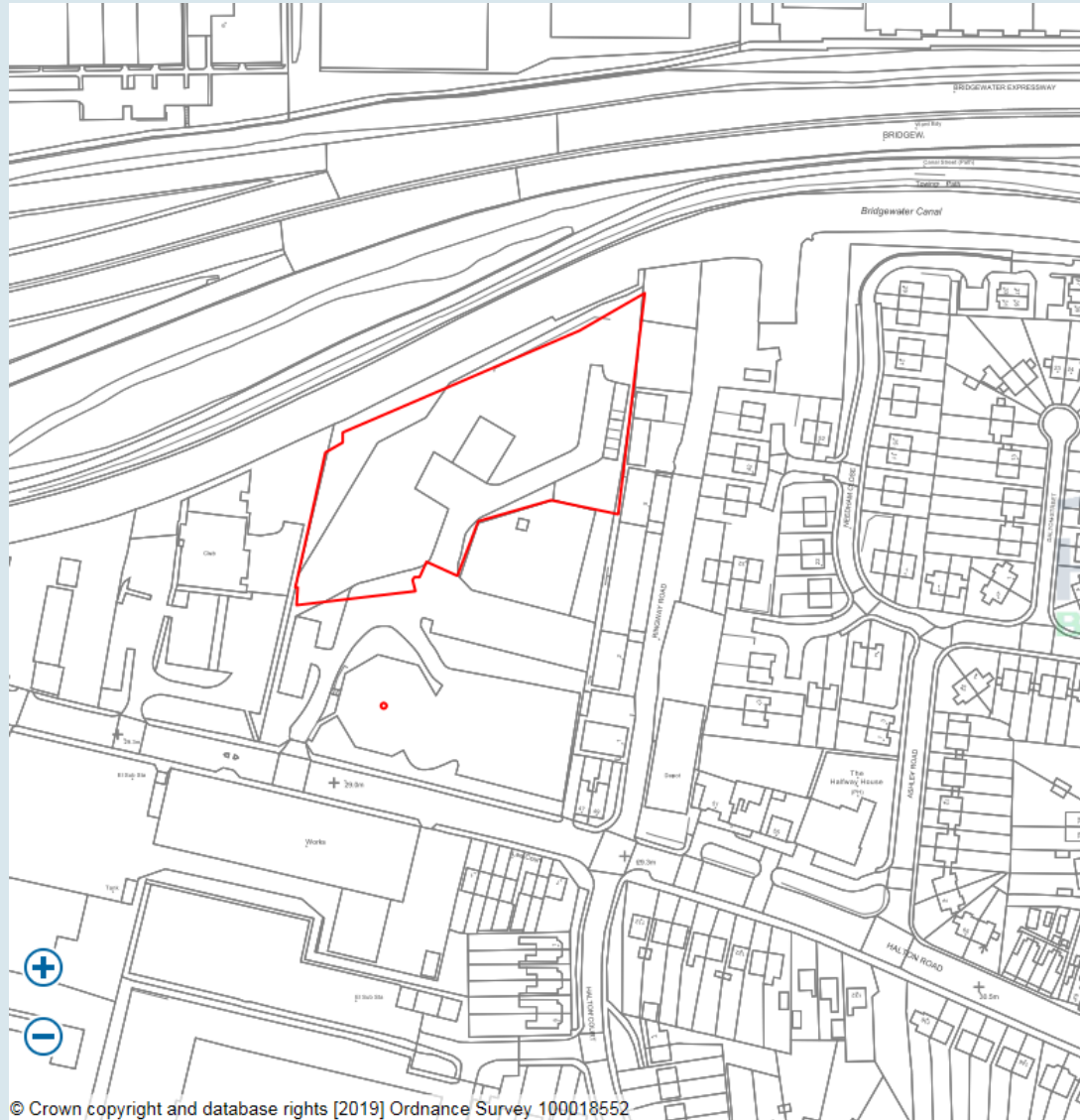
South Elevation



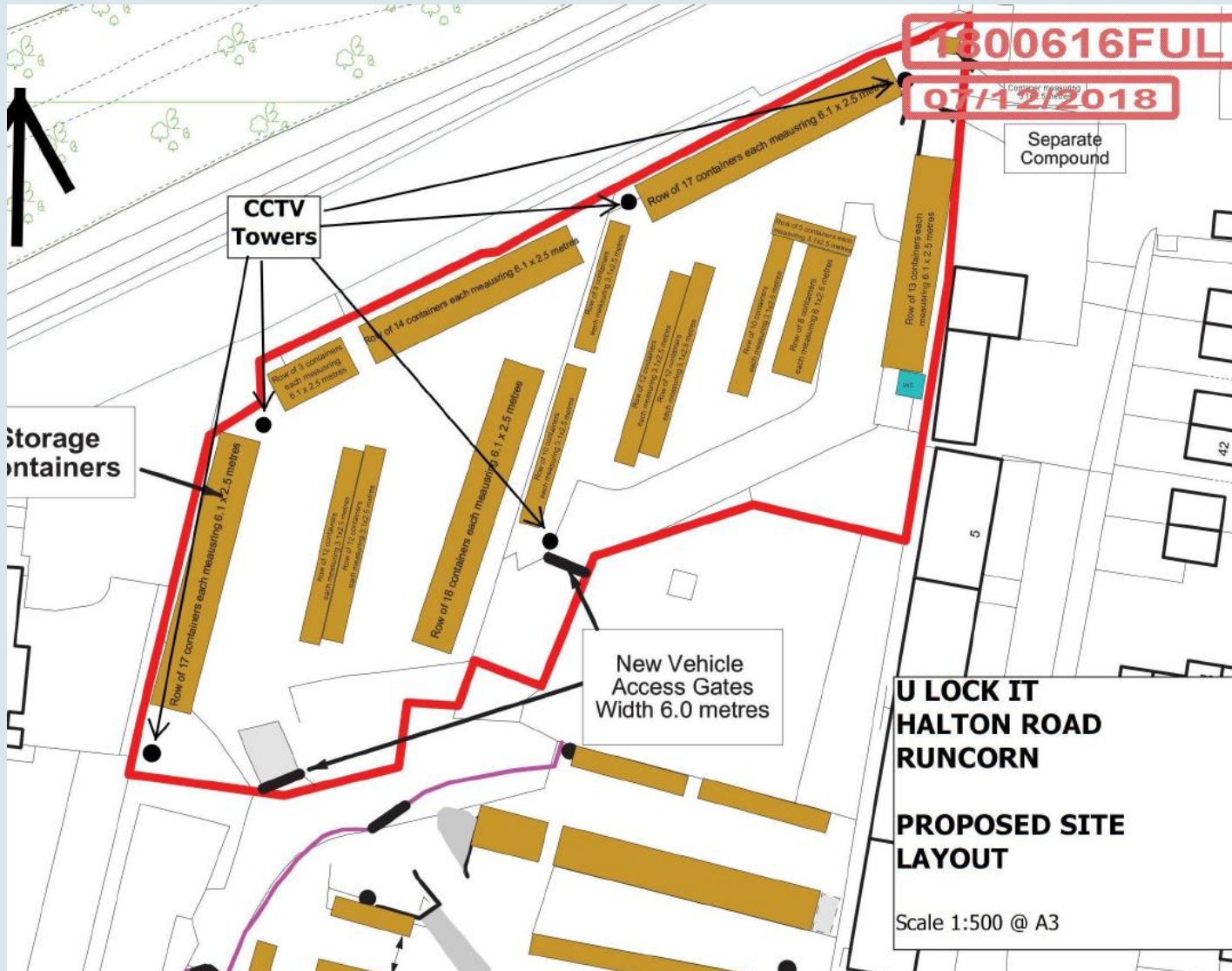
East Elevation



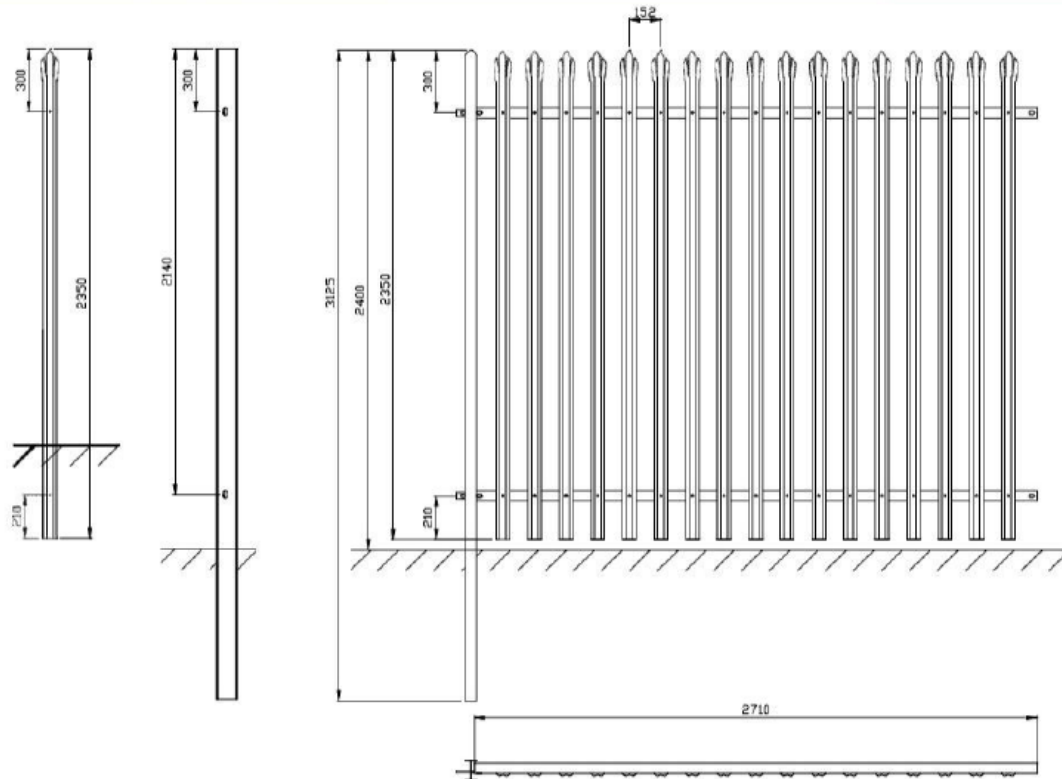








## 2.6 Metre High Palisade



STANDARD 2.6M HIGH PALISADE

HEAD TYPE TRIPLE POINT AND SPLAYED

PALES (17NO PER BAY)

50 X 50 X 6 RSA RAILS (2NO PER BAY)

100 X 55 IPE POSTS (1NO PER BAY)

140 X 30 X 6 FISH PLATES (2NO PER BAY)

M8 X 25 T HEAD PALE FIXINGS WITH SNAP OFF NUTS (34NO PER BAY)

M12 X 30 BUTTON HEAD/CUP SQUARE RAIL FIXINGS (2NO PER RAIL)

