



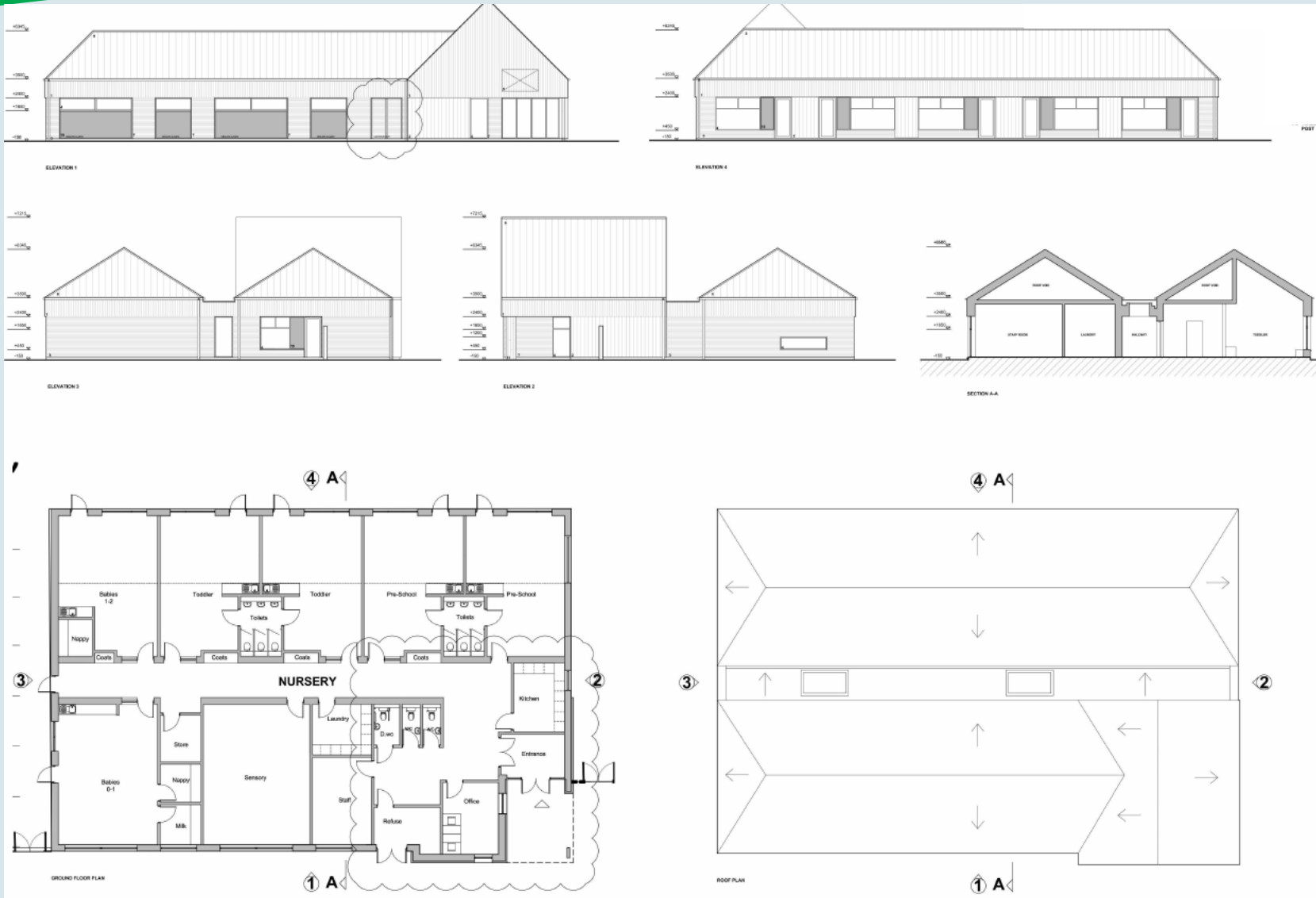
ELEVATION 1



ELEVATION 2















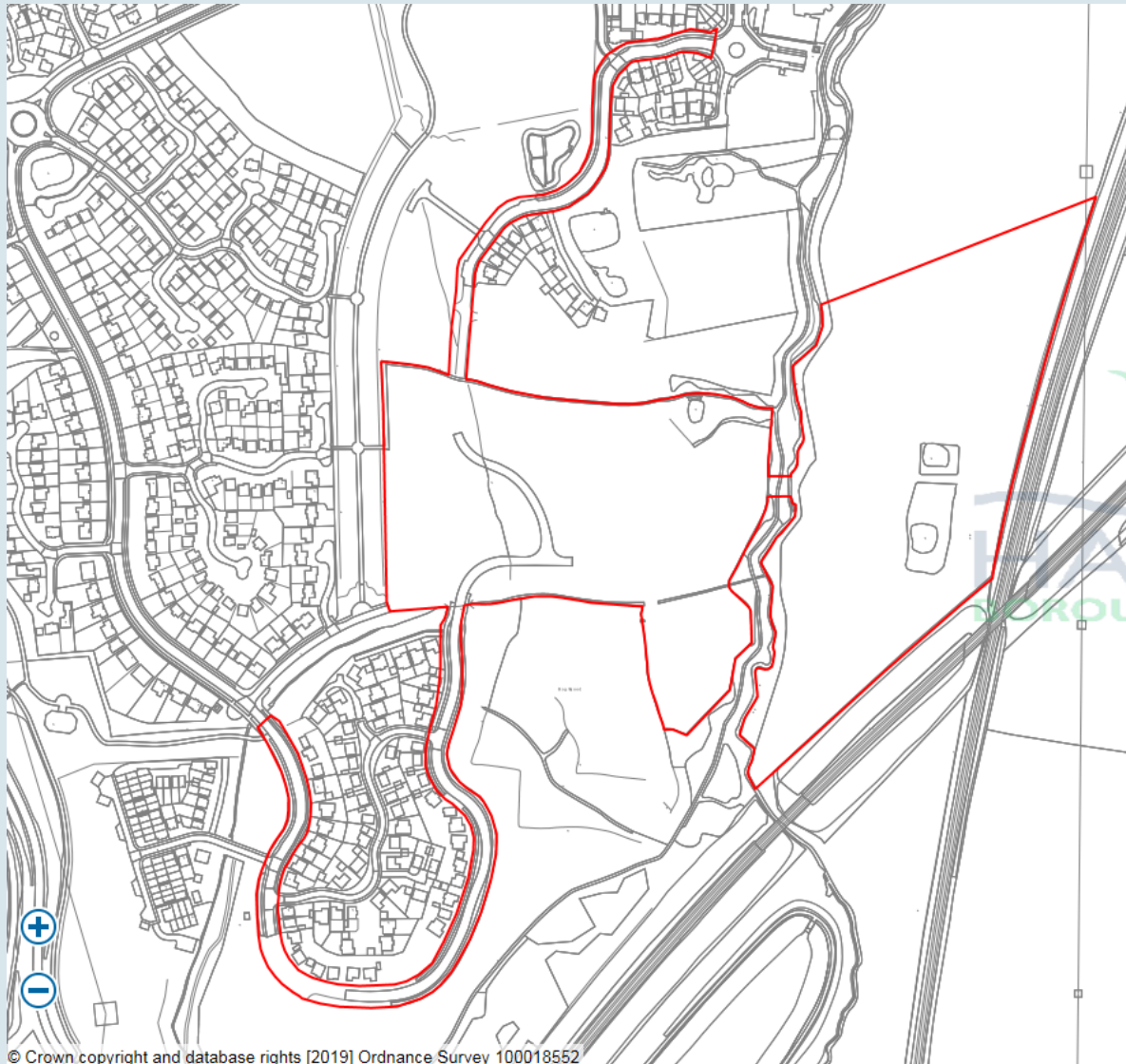








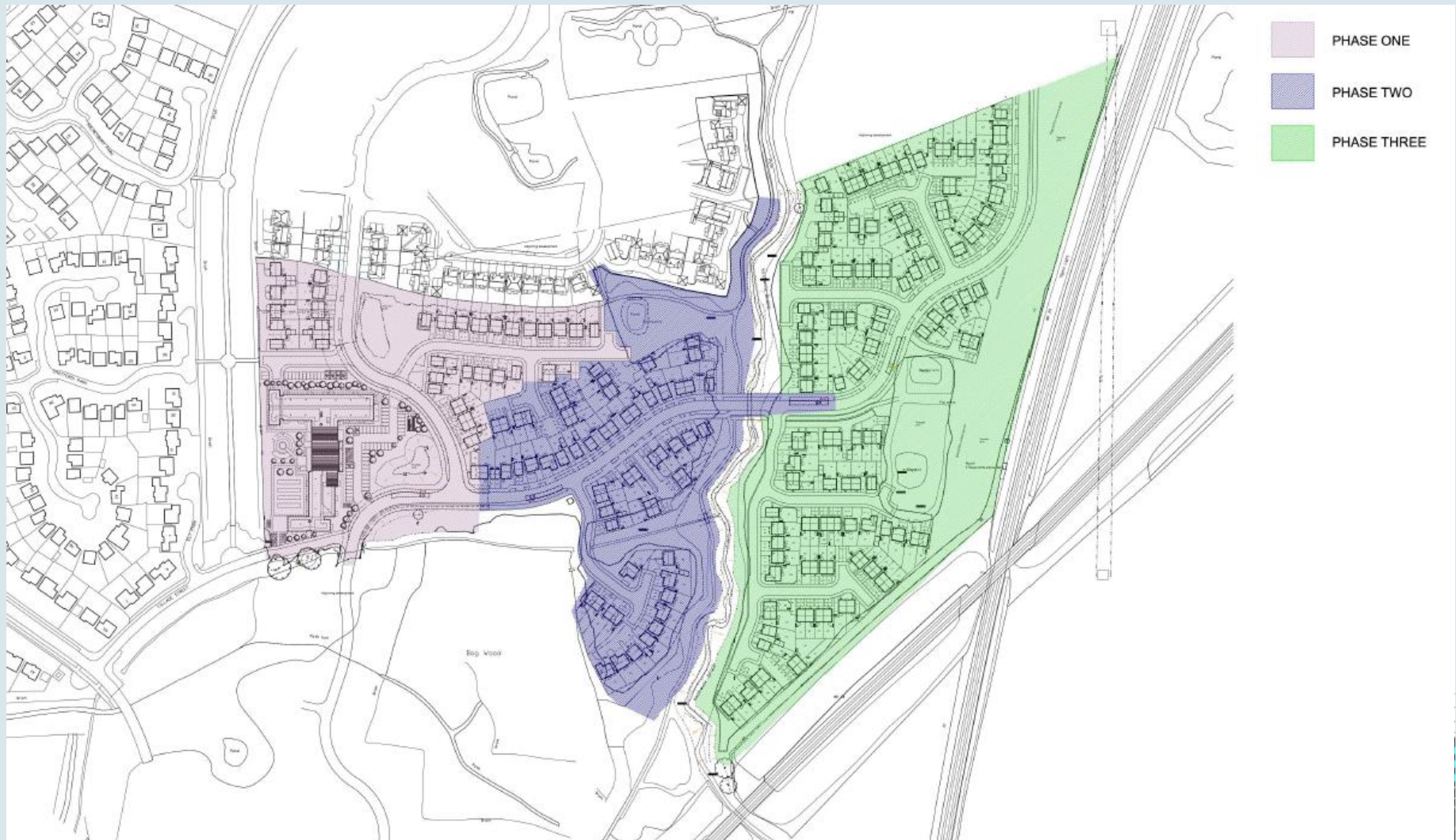














STREET SCENE A-A @ 1:200



STREET SCENE B-B @ 1:200



STREET SCENE KEY (NTS)













East Facing Elevation [1]



West Facing Elevation [1]



North Facing Elevation (1)



North Facing Elevation (2)



South Facing Elevation (1)



South Facing Elevation (2)











