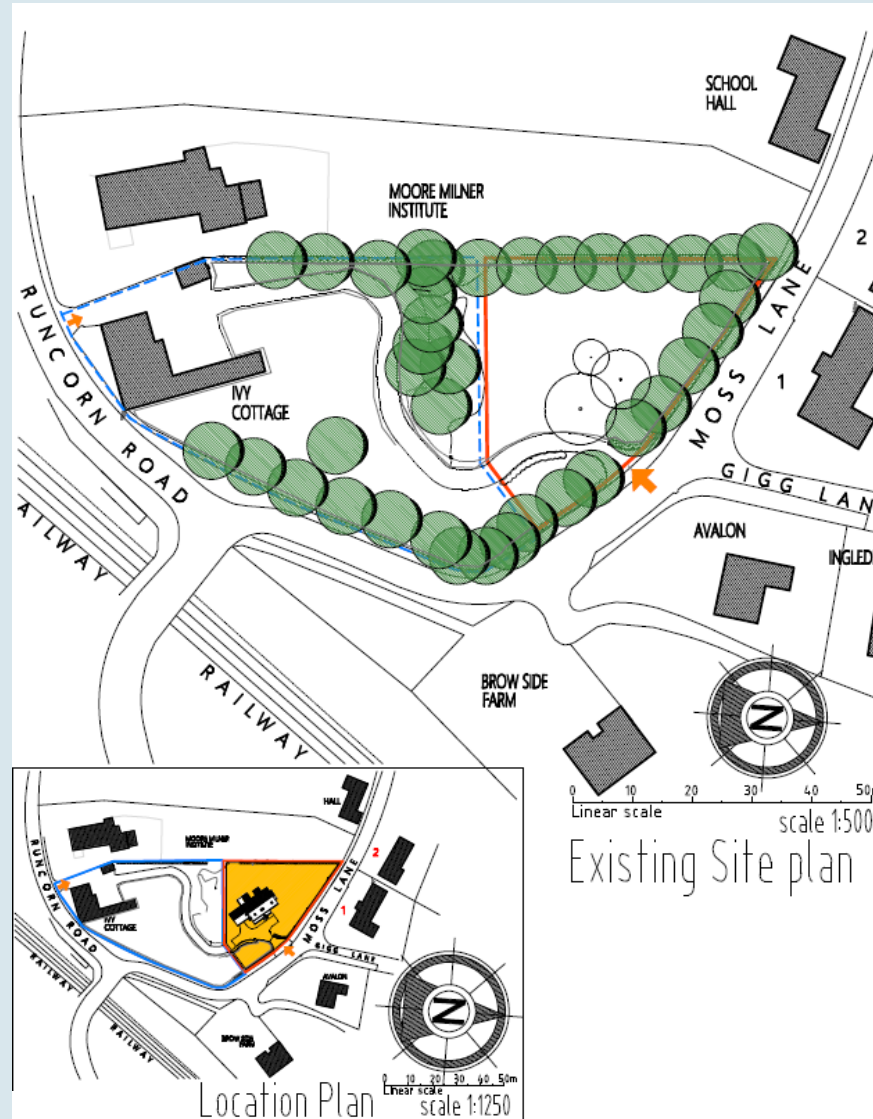
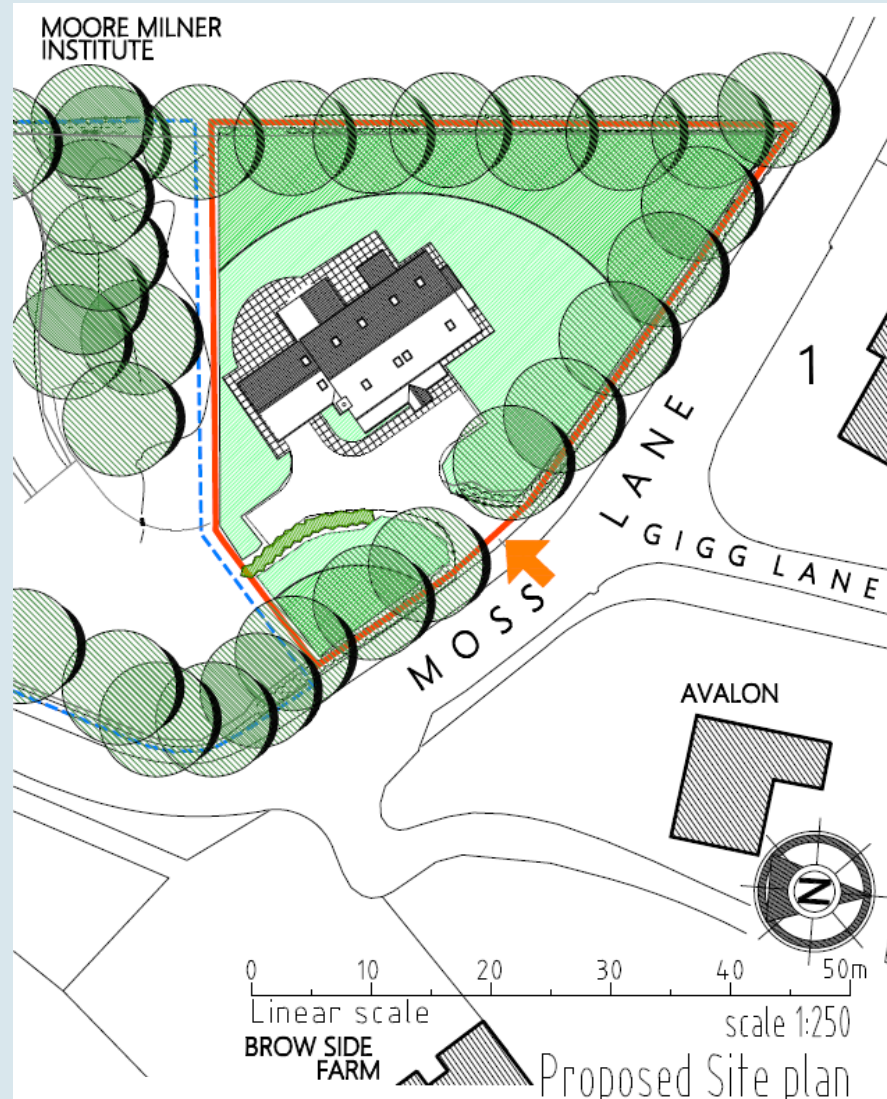
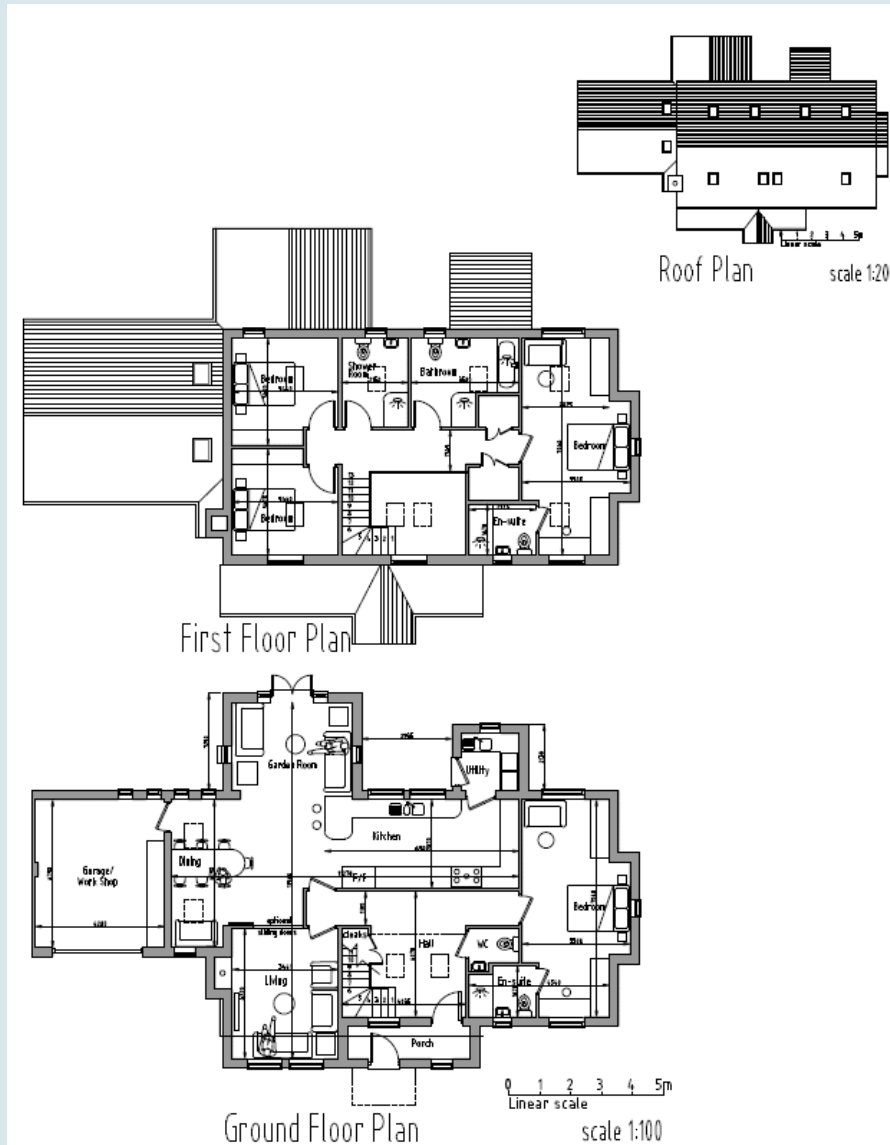


© Crown copyright and database rights [2018] Ordnance Survey 100018552









Rear Elevation (South West)



Front Elevation (North East)



Side Elevation (South East)



Side Elevation (North West)

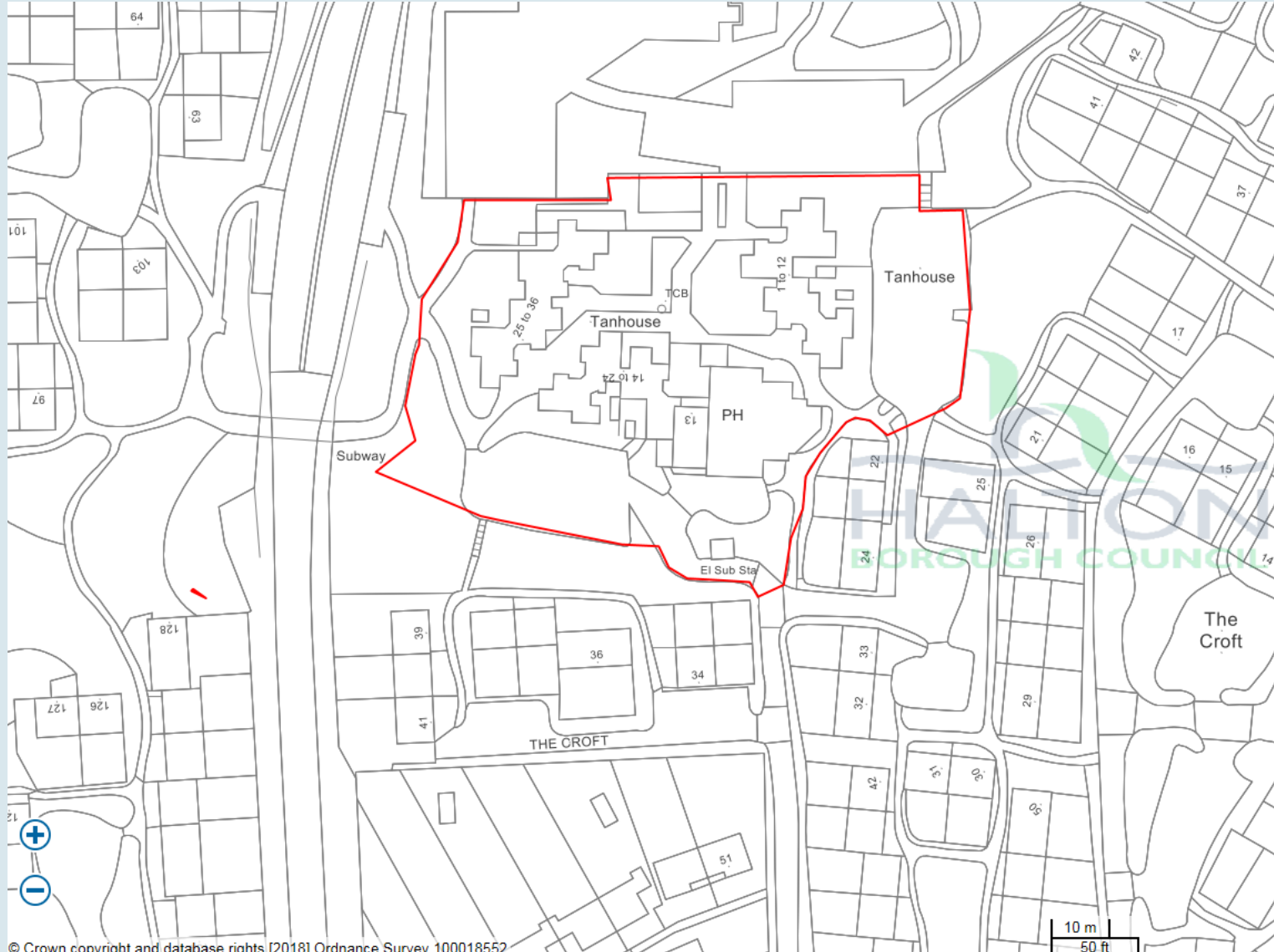




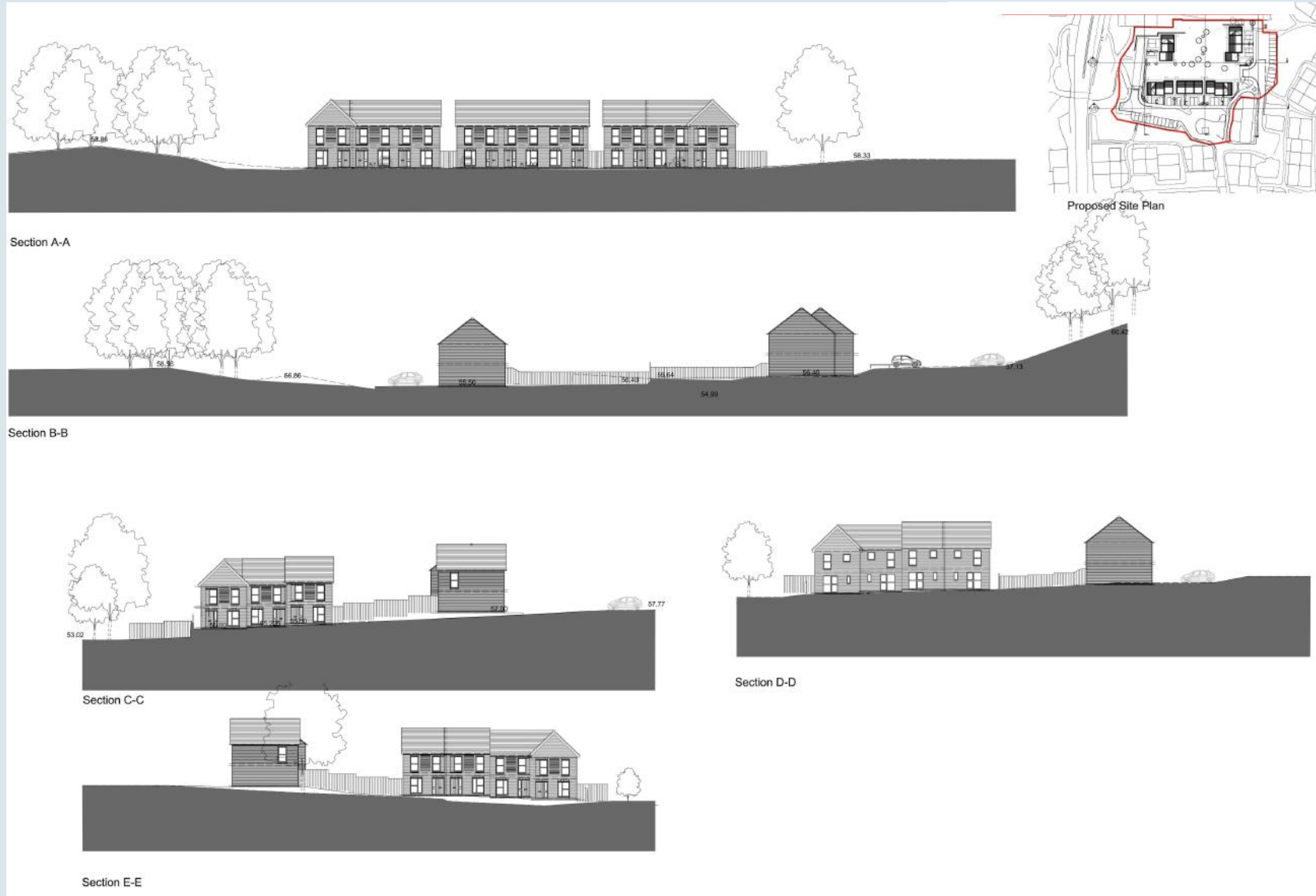
Copyright Bluesky

Application Number: 18/00289/FUL

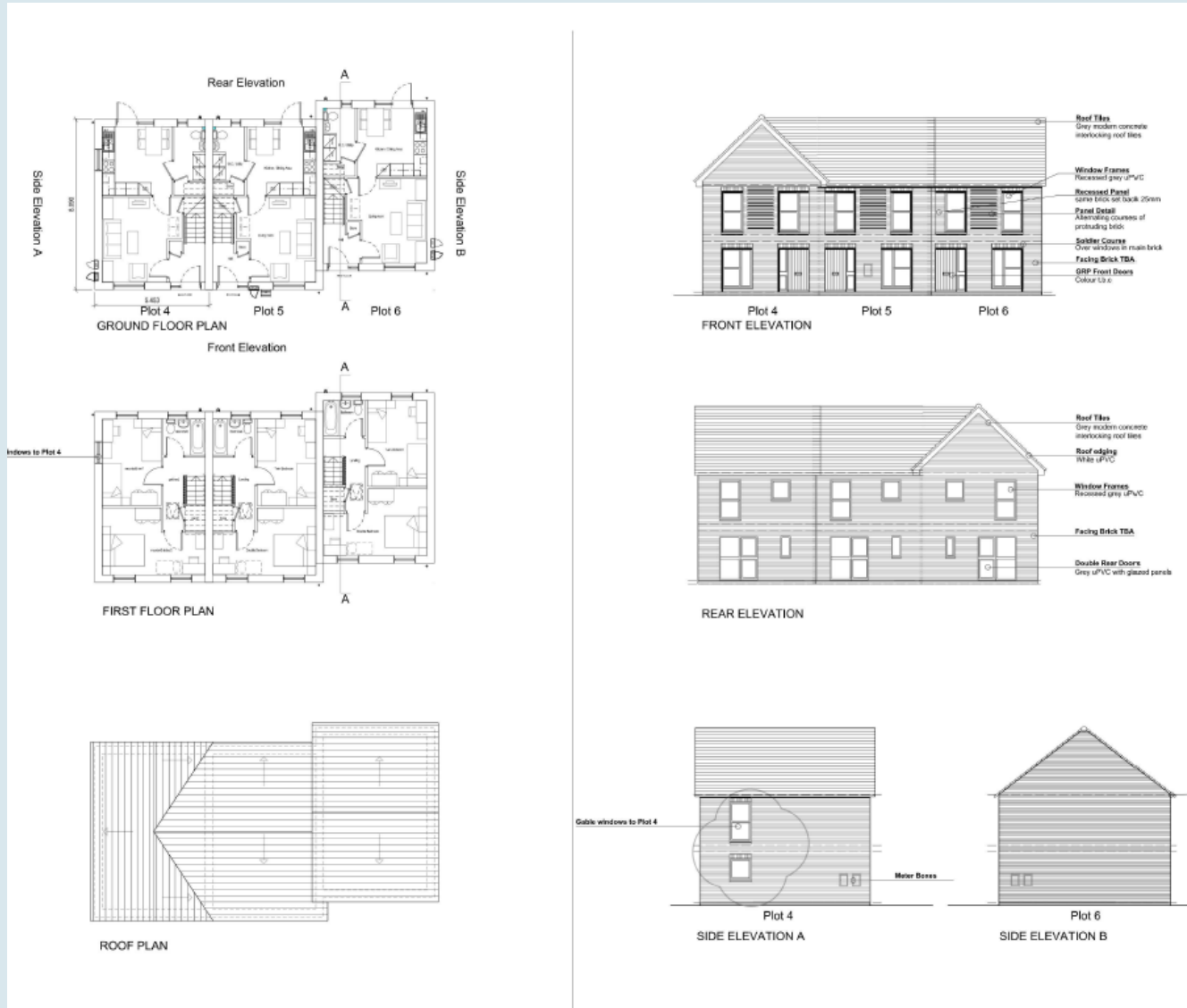
Plan 1F : Aerial Photograph

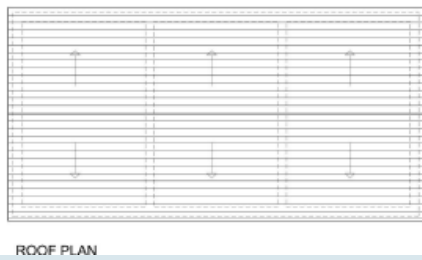
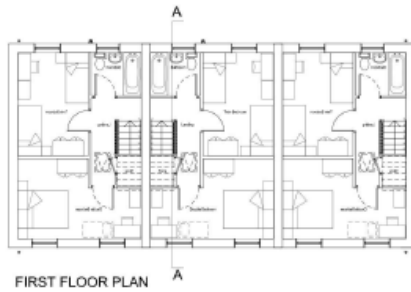
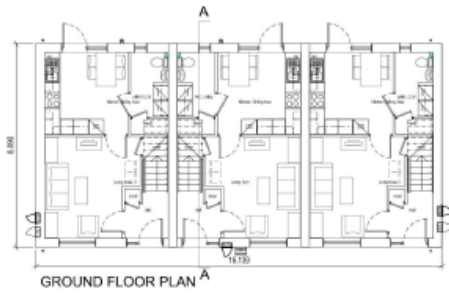


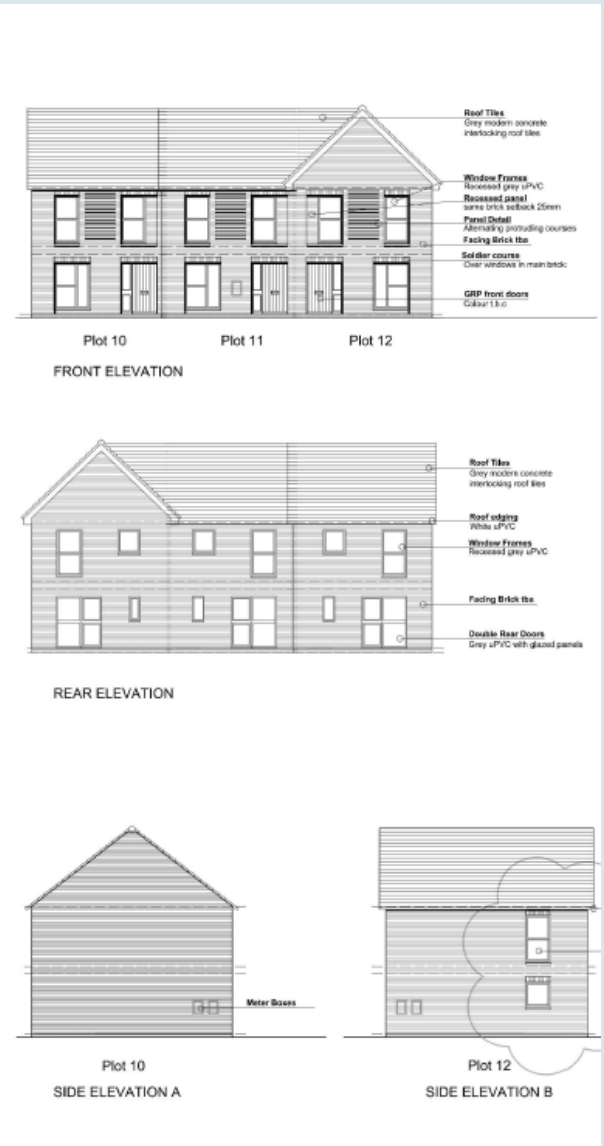
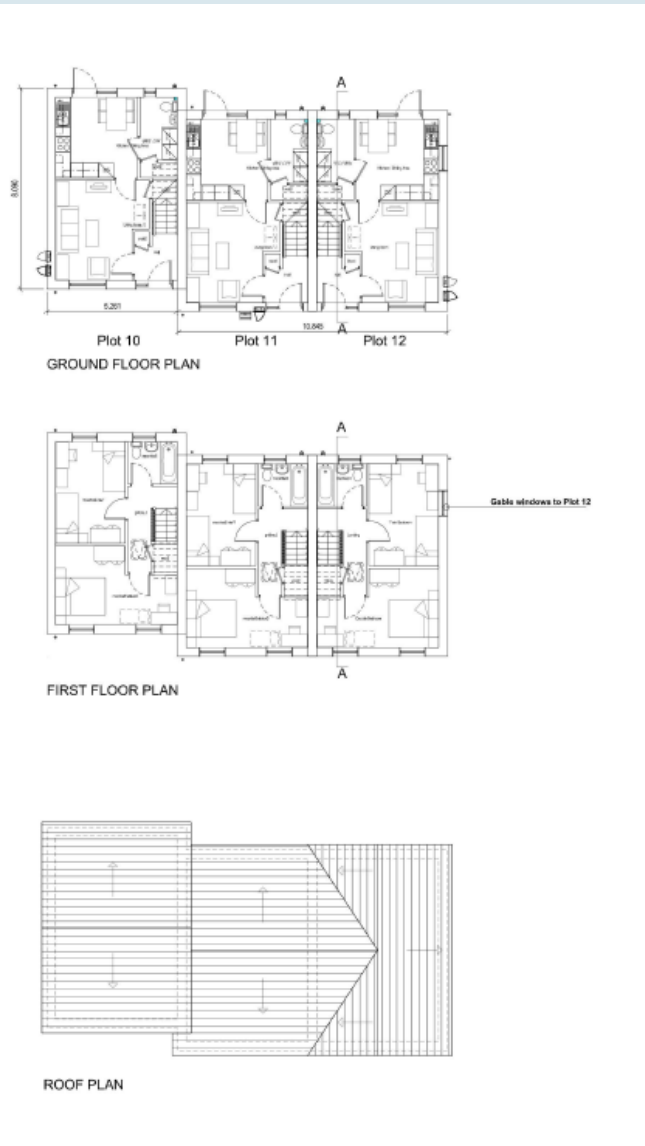


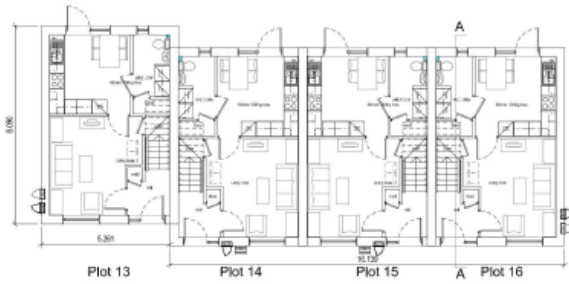








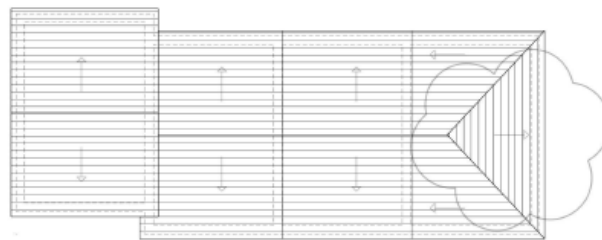




GROUND FLOOR PLAN



FIRST FLOOR PLAN



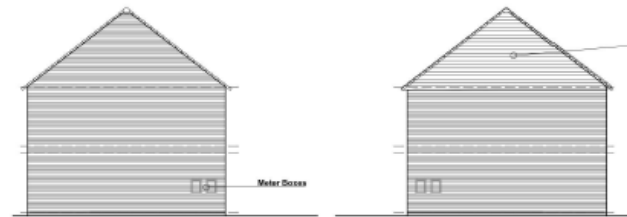
ROOF PLAN



FRONT ELEVATION



REAR ELEVATION



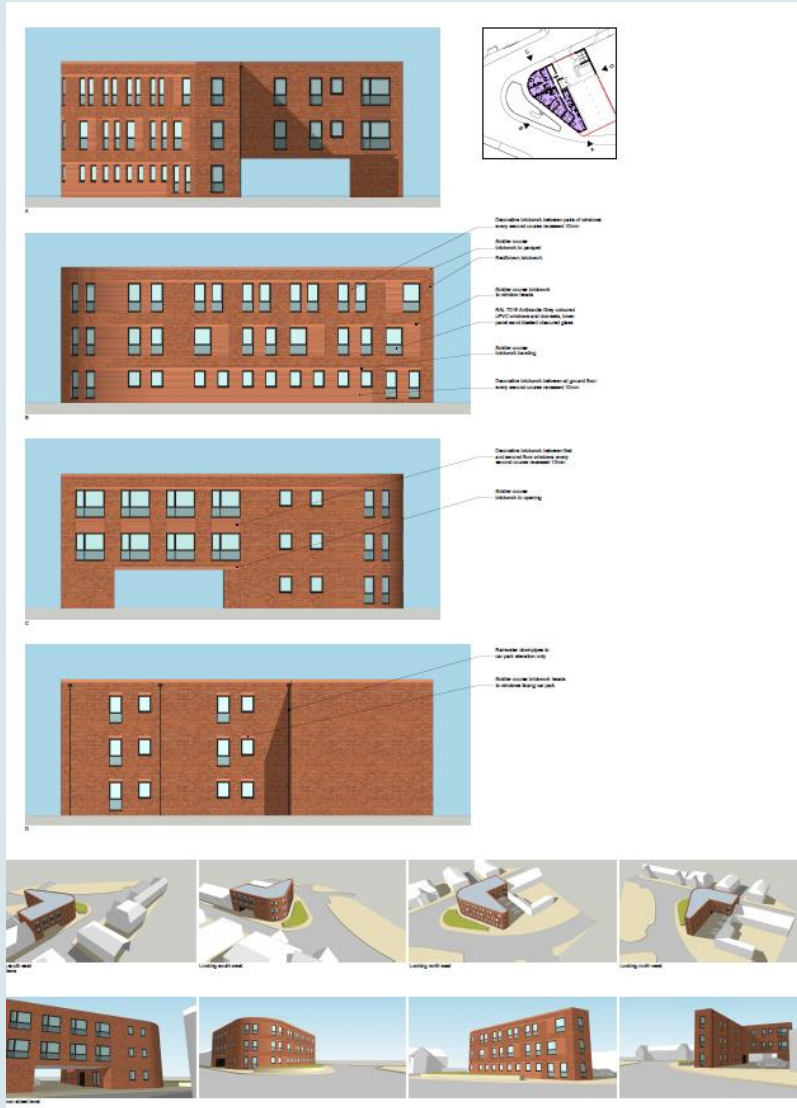
SIDE ELEVATION A

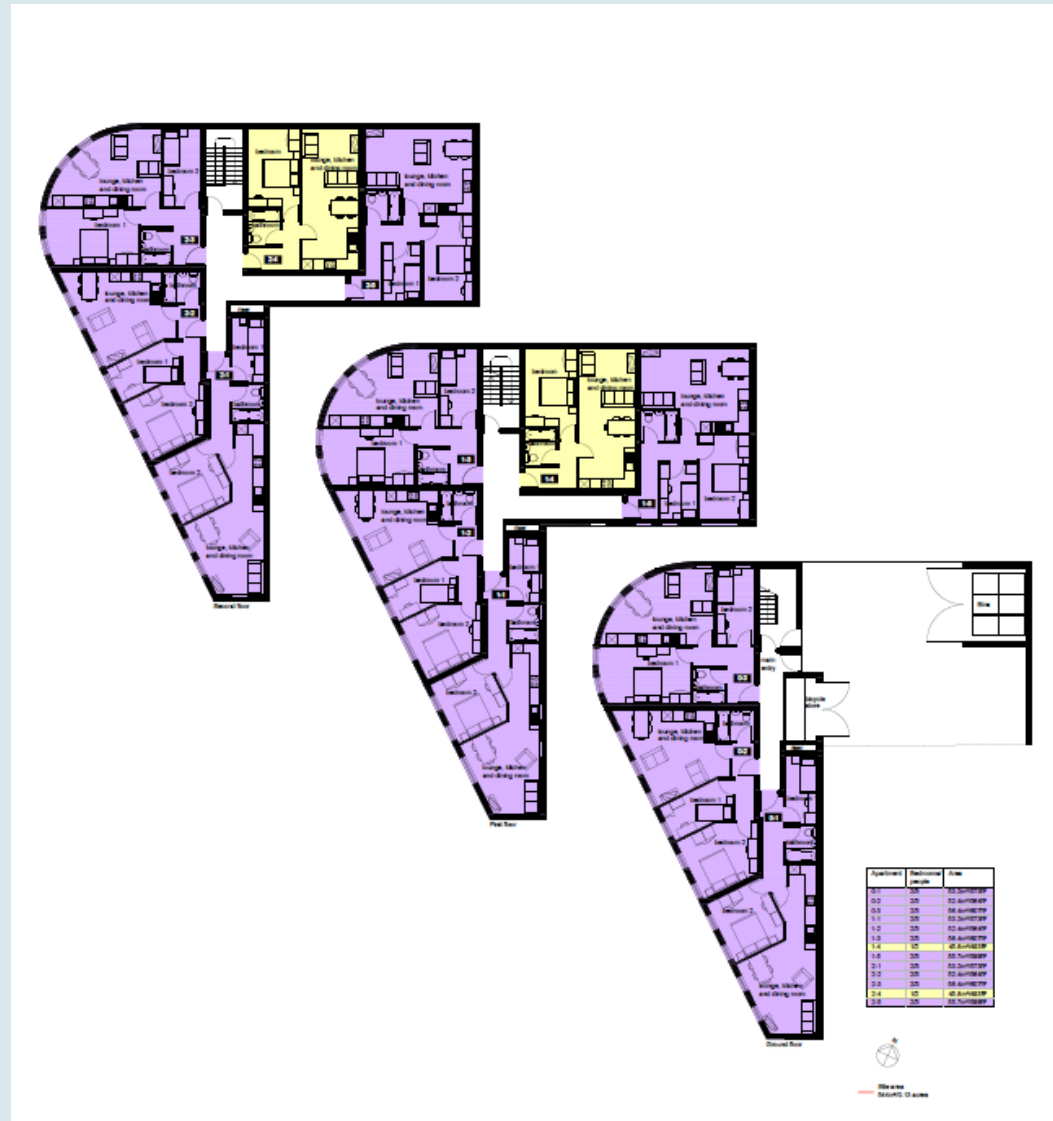
SIDE ELEVATION B



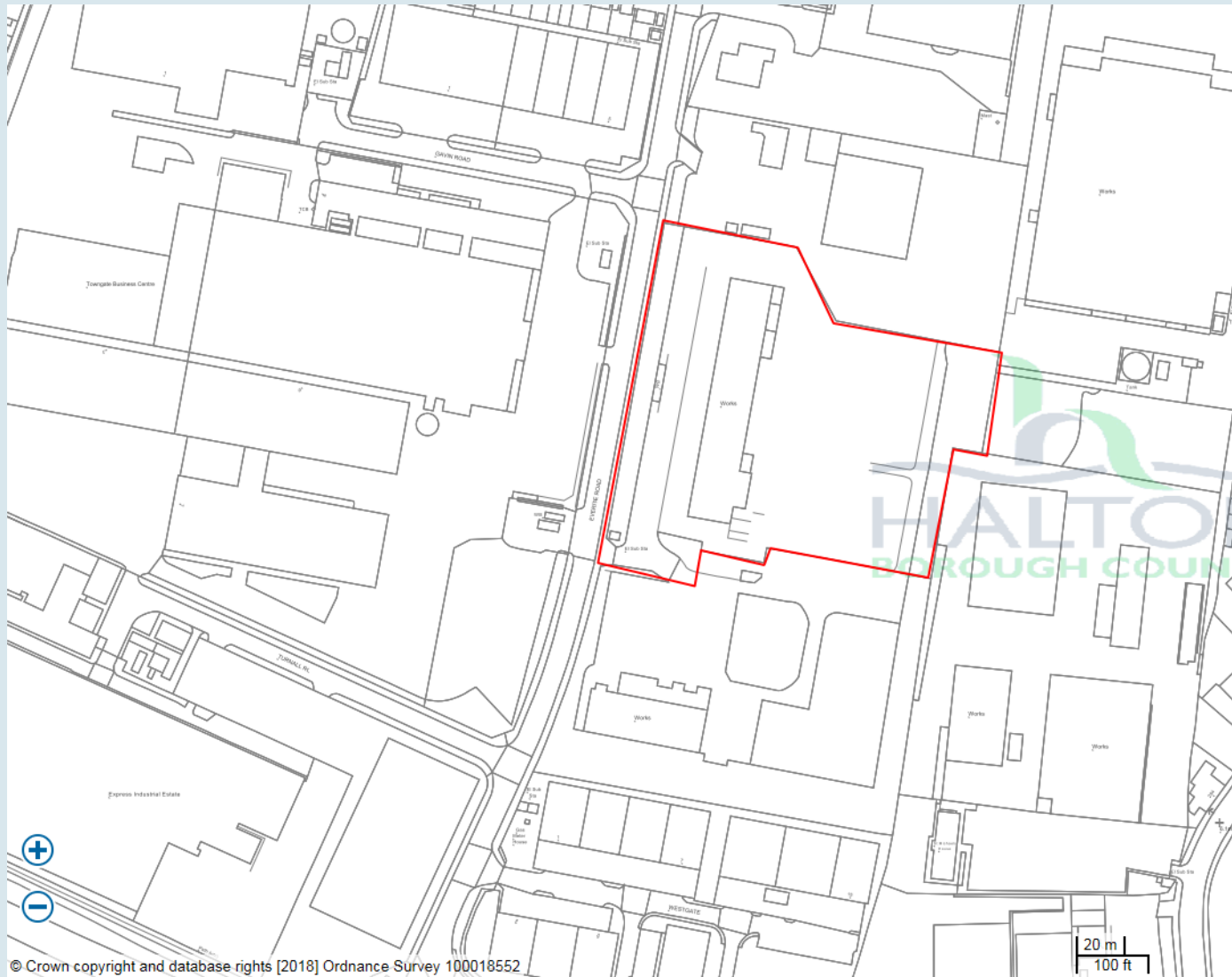


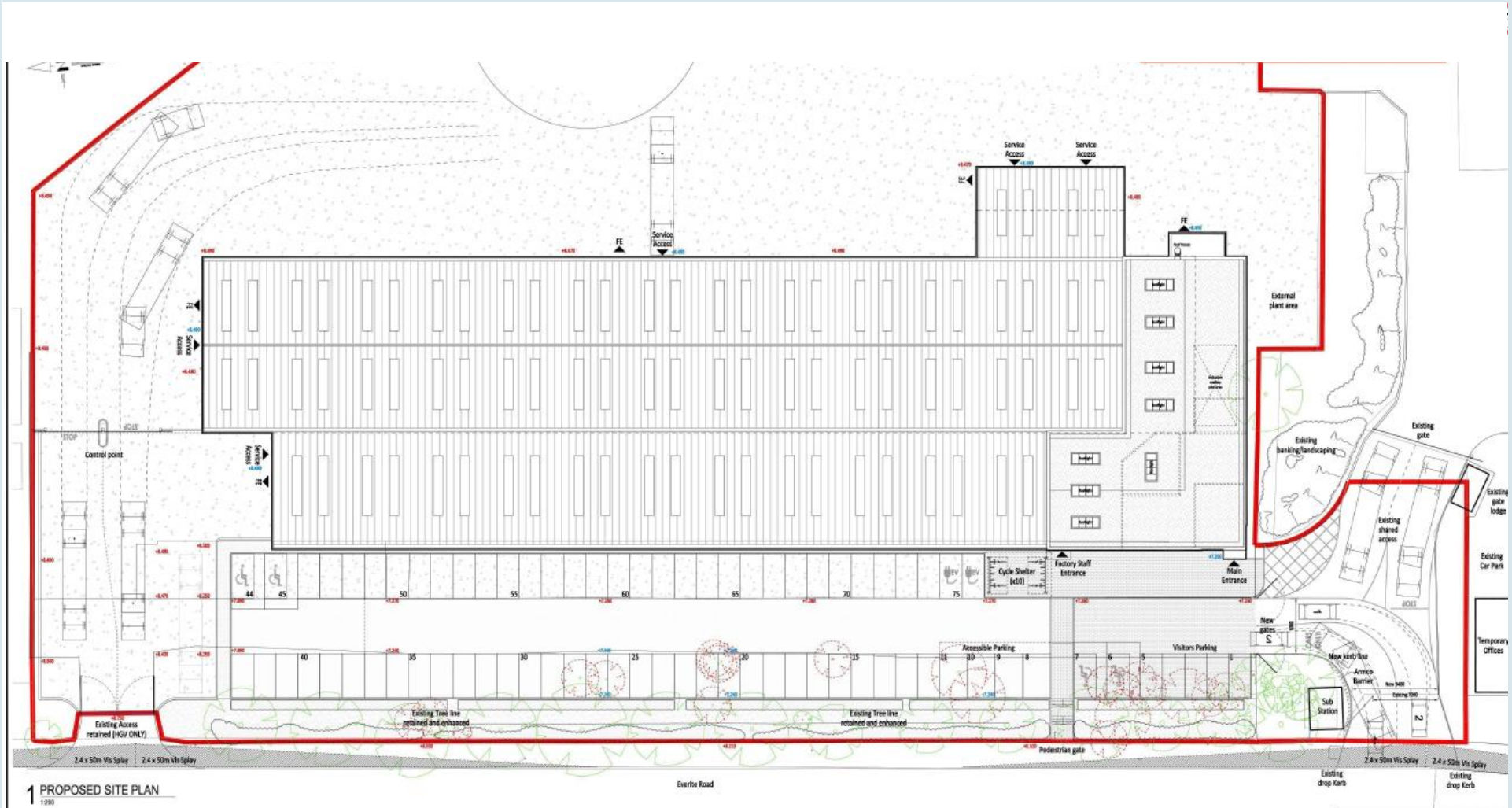


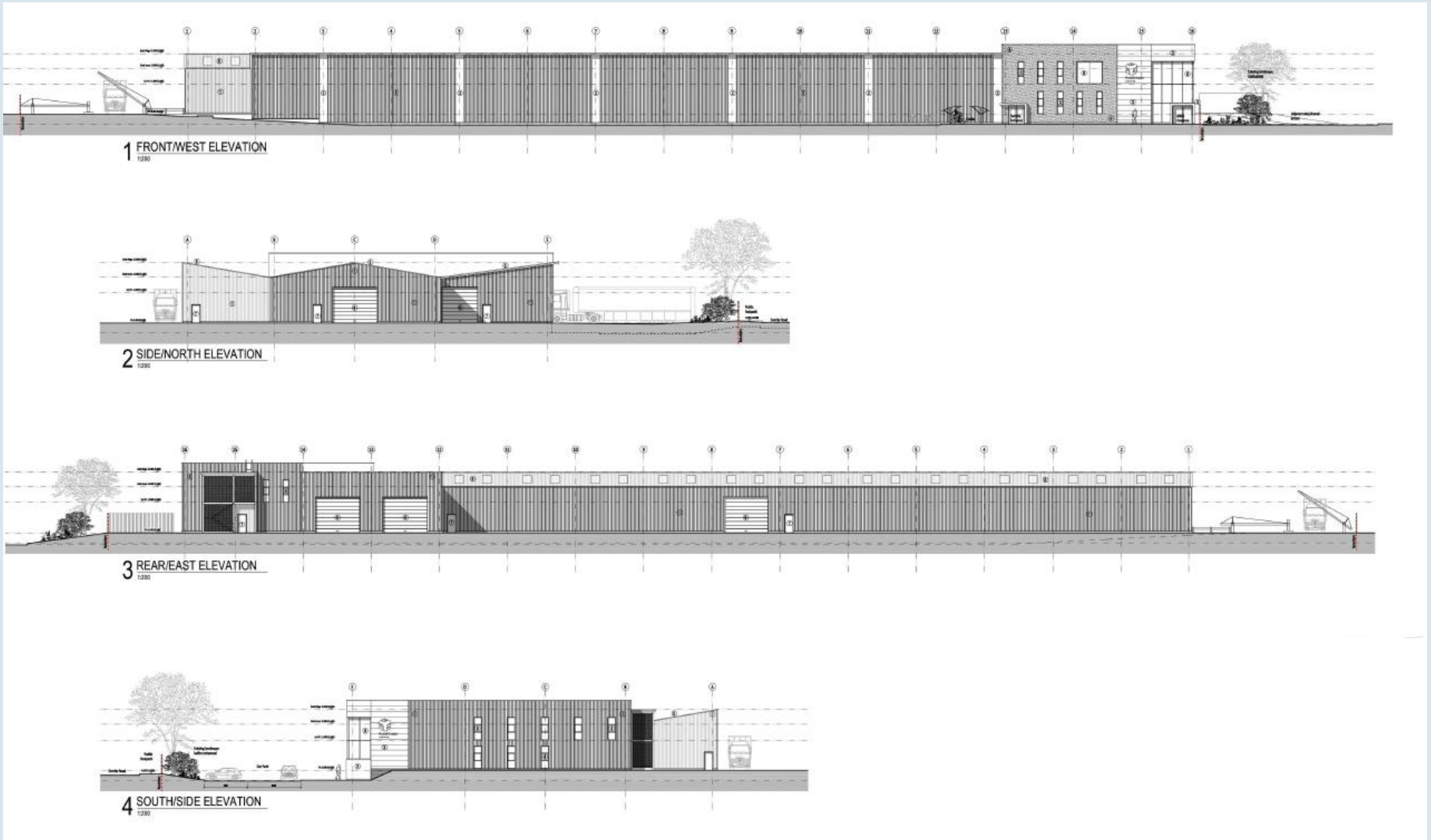


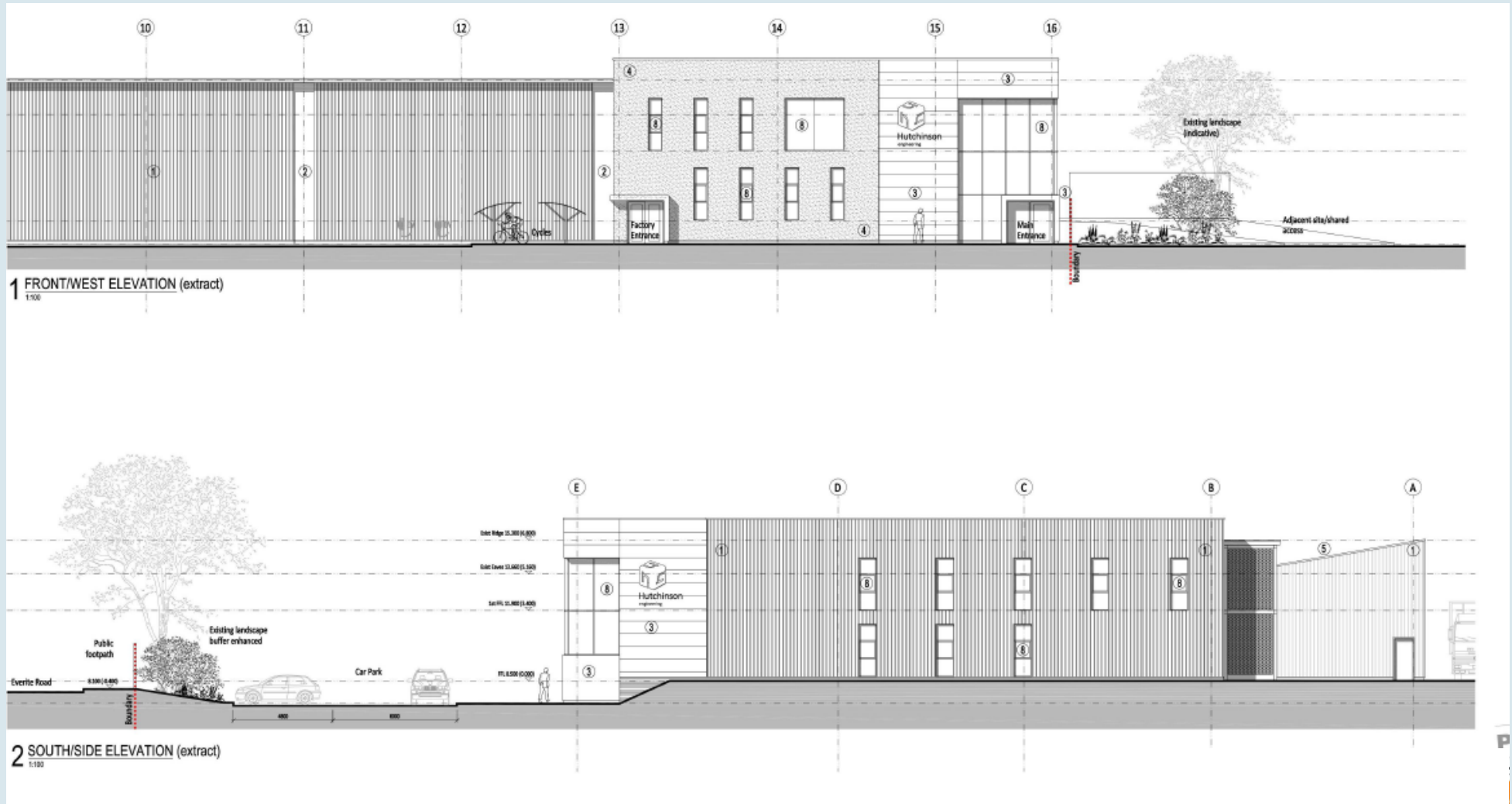


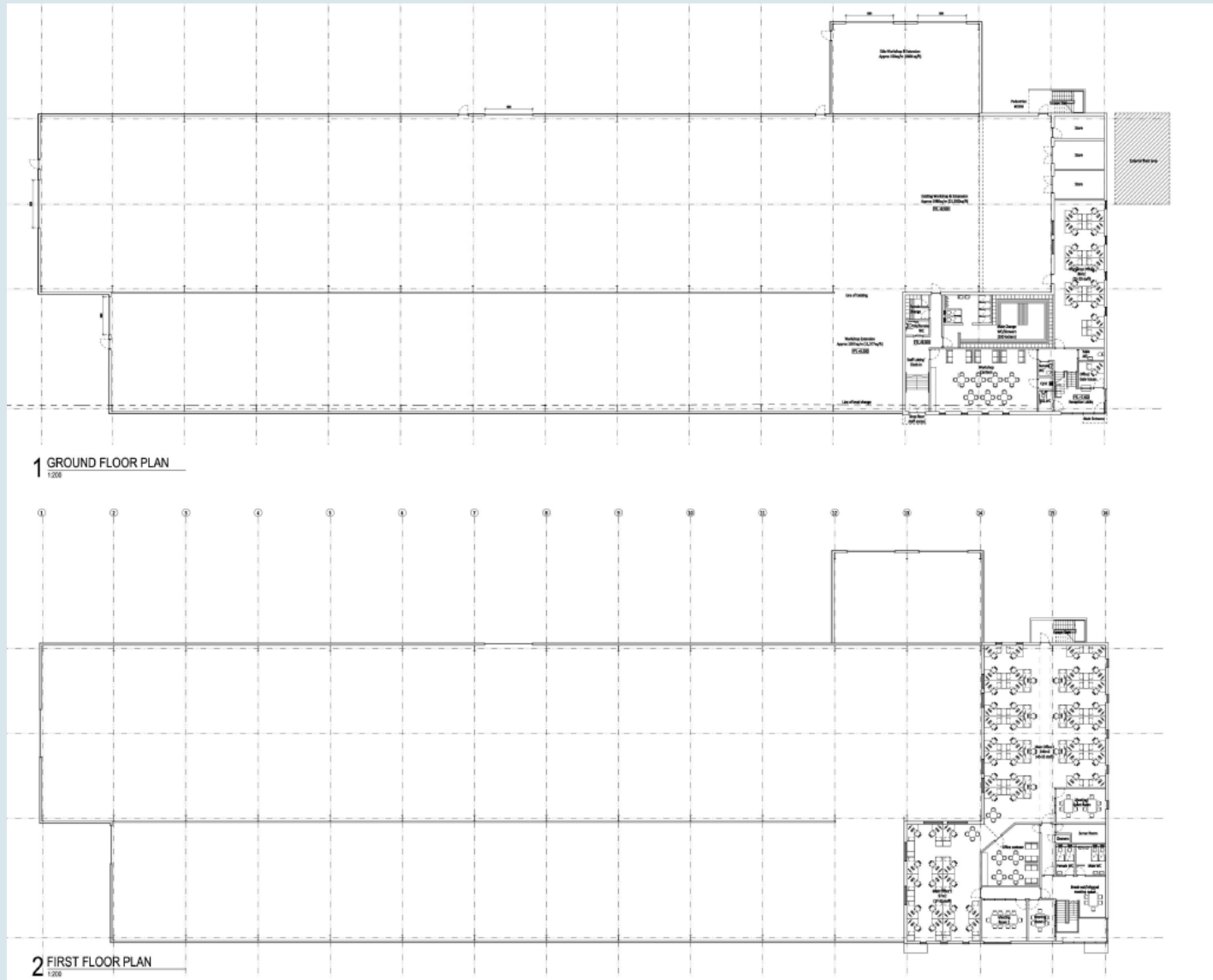


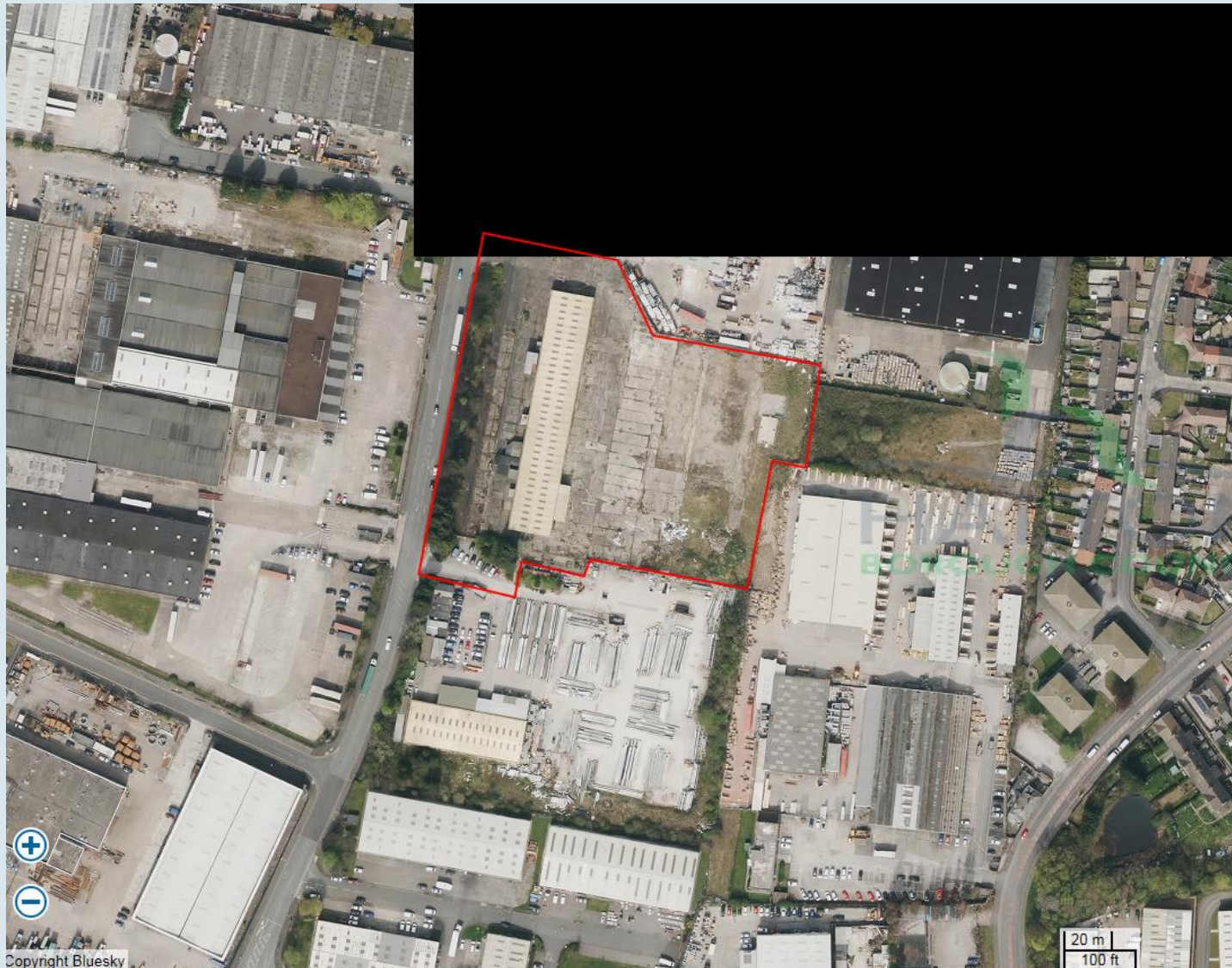


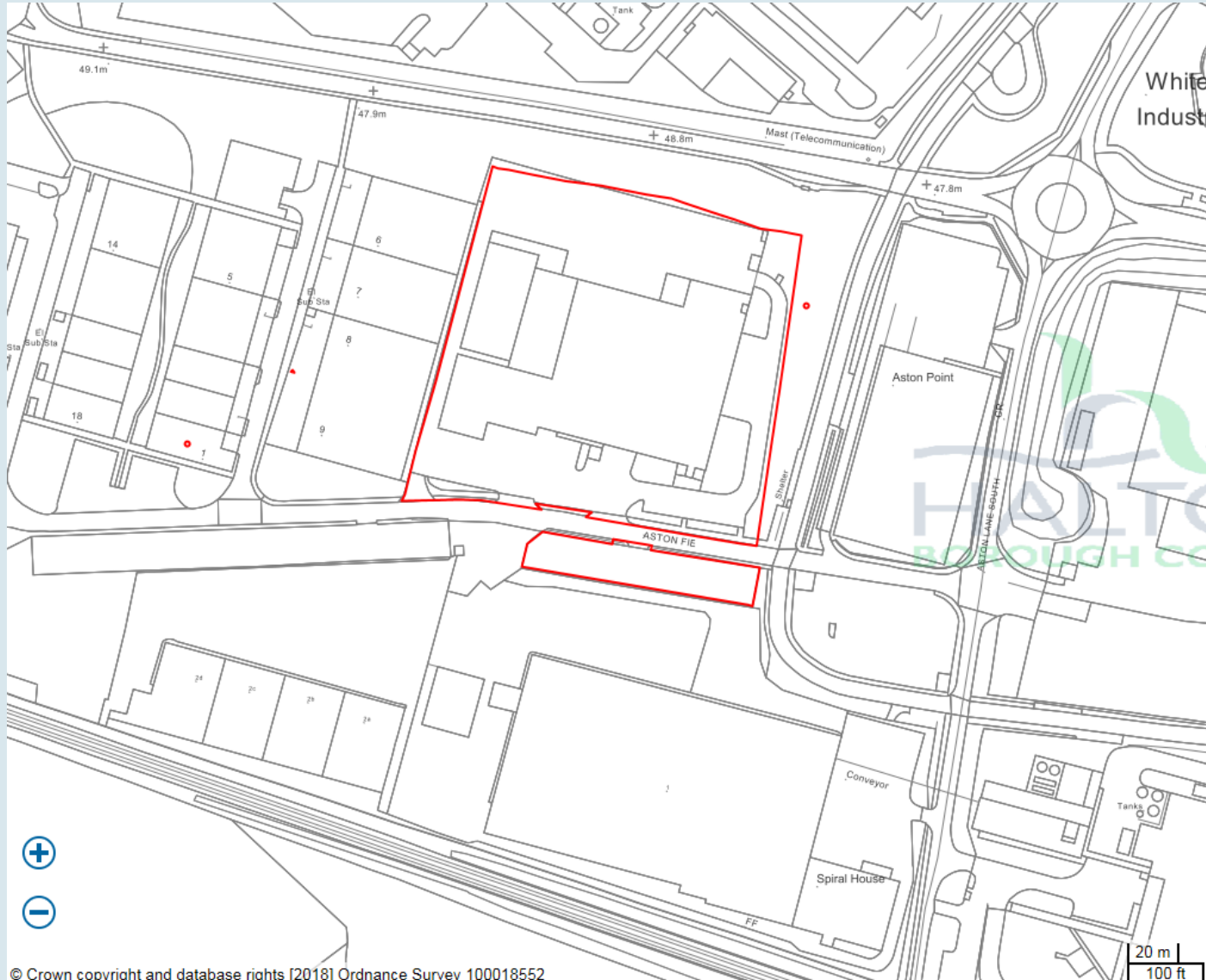


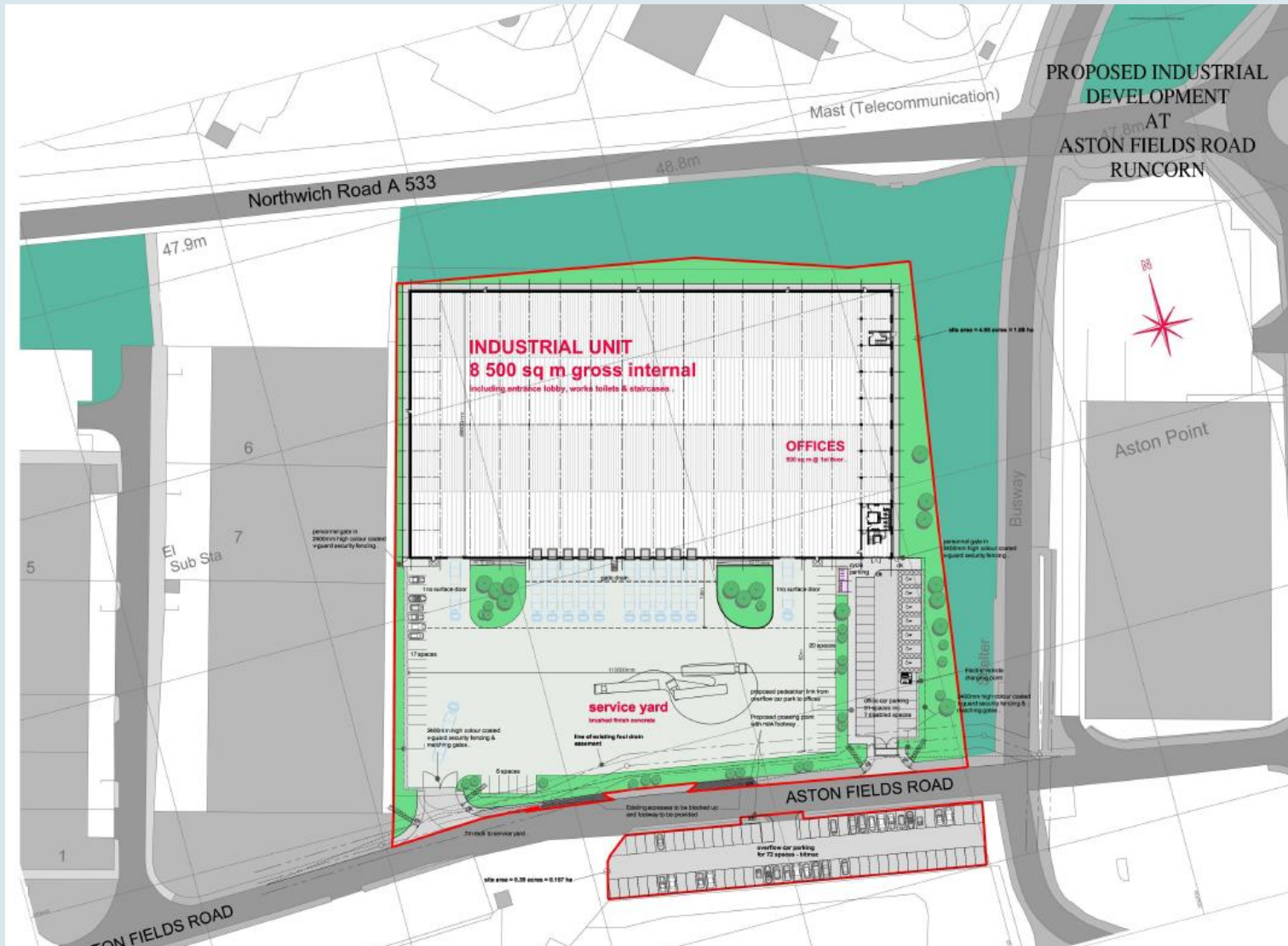


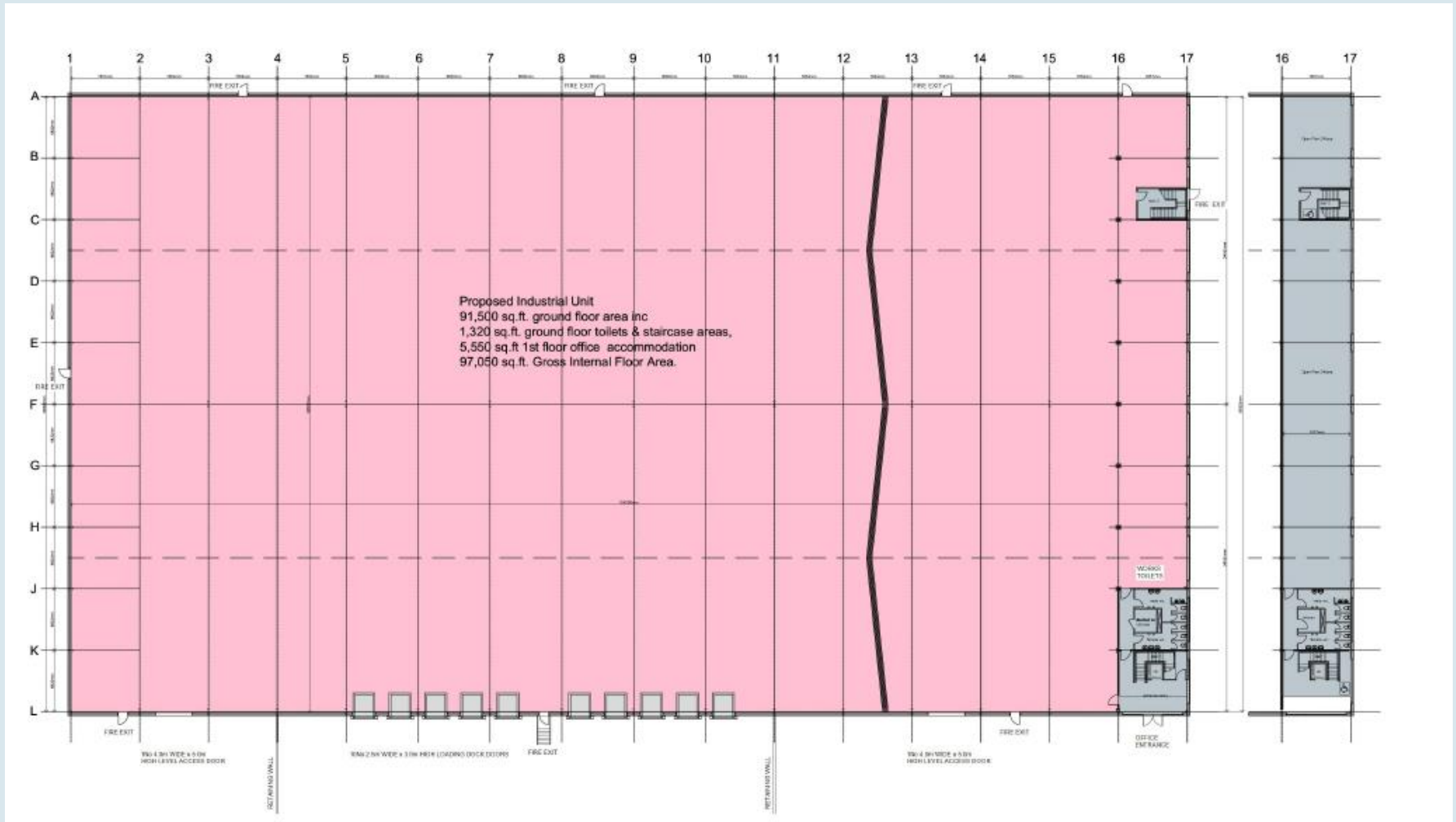


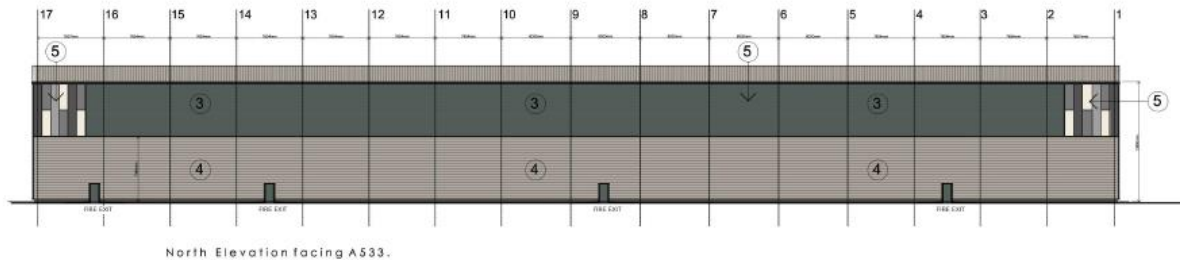
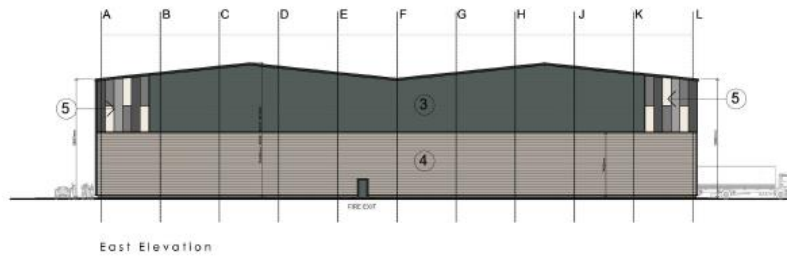
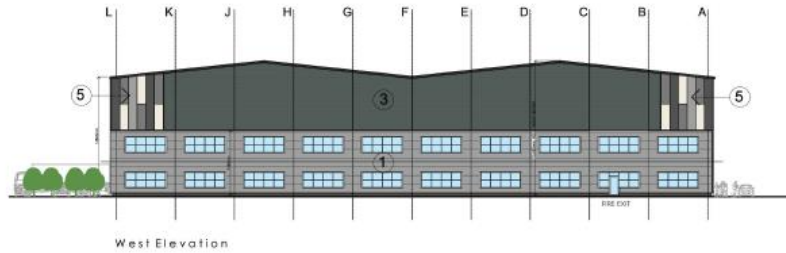
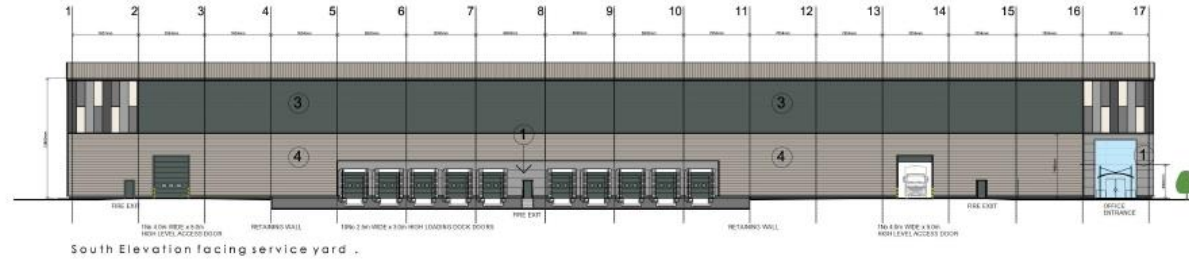




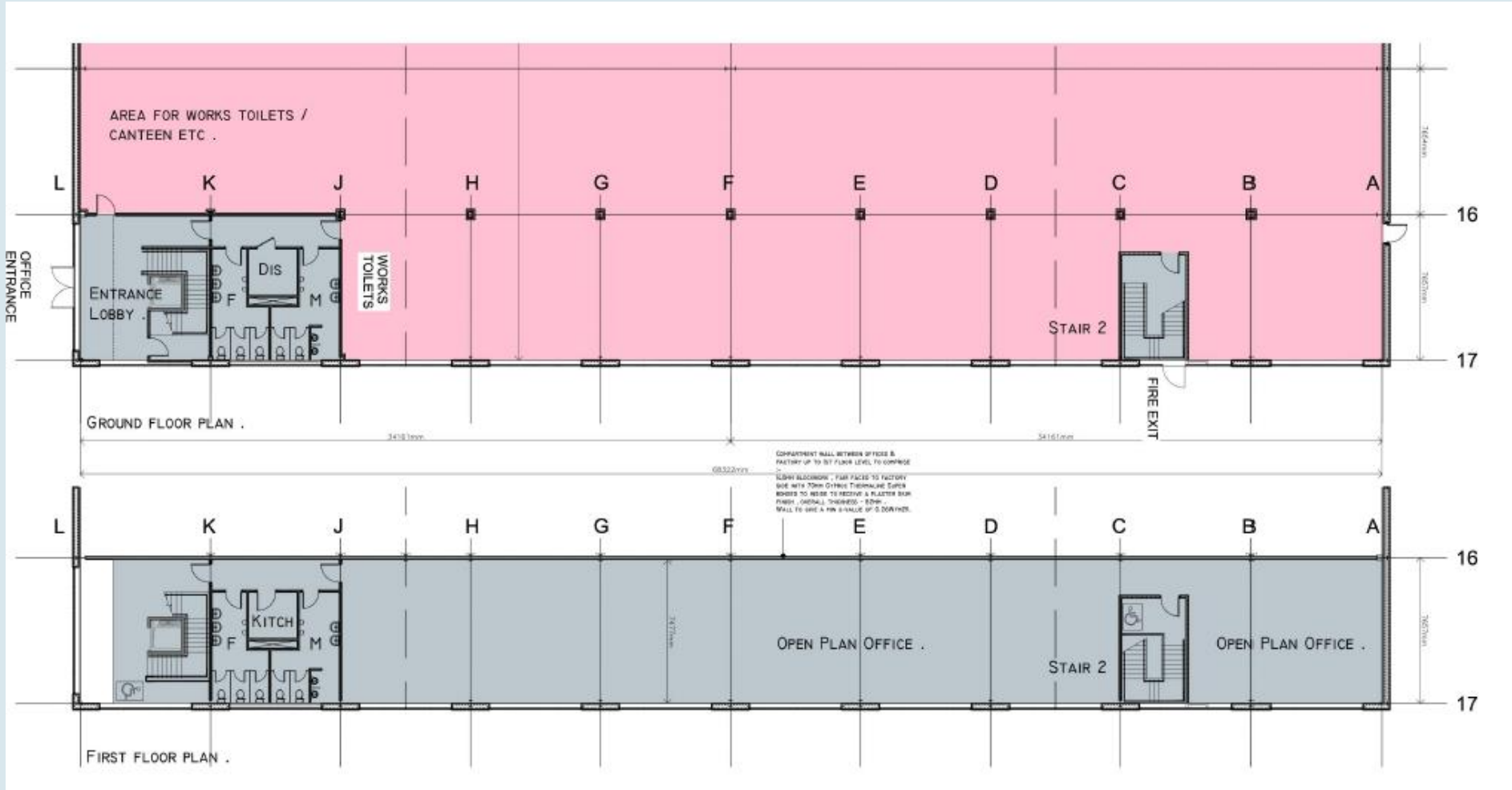


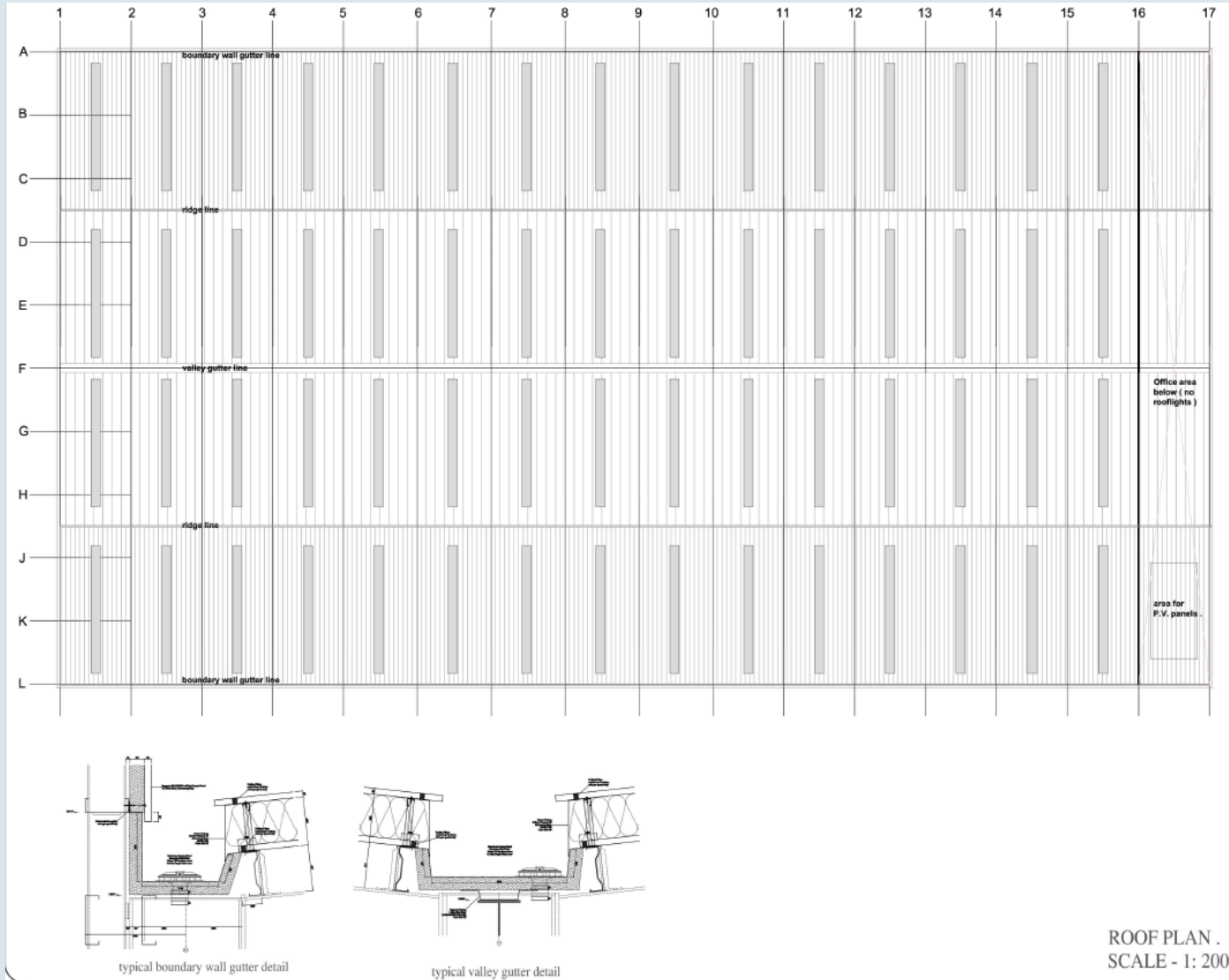






- External Materials :
1. Kingspan KS1000MR - Micro-rib composite panels, Colour - Metallic Silver Ral 9006
 3. Horizontal Euroclad half round cladding system, Colour - Grey Aluminium Ral 9007
 4. Horizontal Euroclad half round cladding system, Colour - Metallic Silver Ral 9005
 5. Kingspan KS1000MR - Micro-rib composite panels, Laid vertically in 8.0m and 3.5m lengths, Colours : Metallic Silver Ral 9006, Jet Ral 9005, Diamond 9023, Pearl 9010.
- All flashings to be contrasting Black.
 Windows/Doors to be RAL 9007 Grey.
 Office fascia to be Alaska Grey composite with black flashings
 Office brickwork to be Itaback 65mm Atlas Smooth Blue with Black coloured mortar.







Copyright Bluesky

Application Number: I8/00434/FUL

Plan 5H: Aerial Photograph