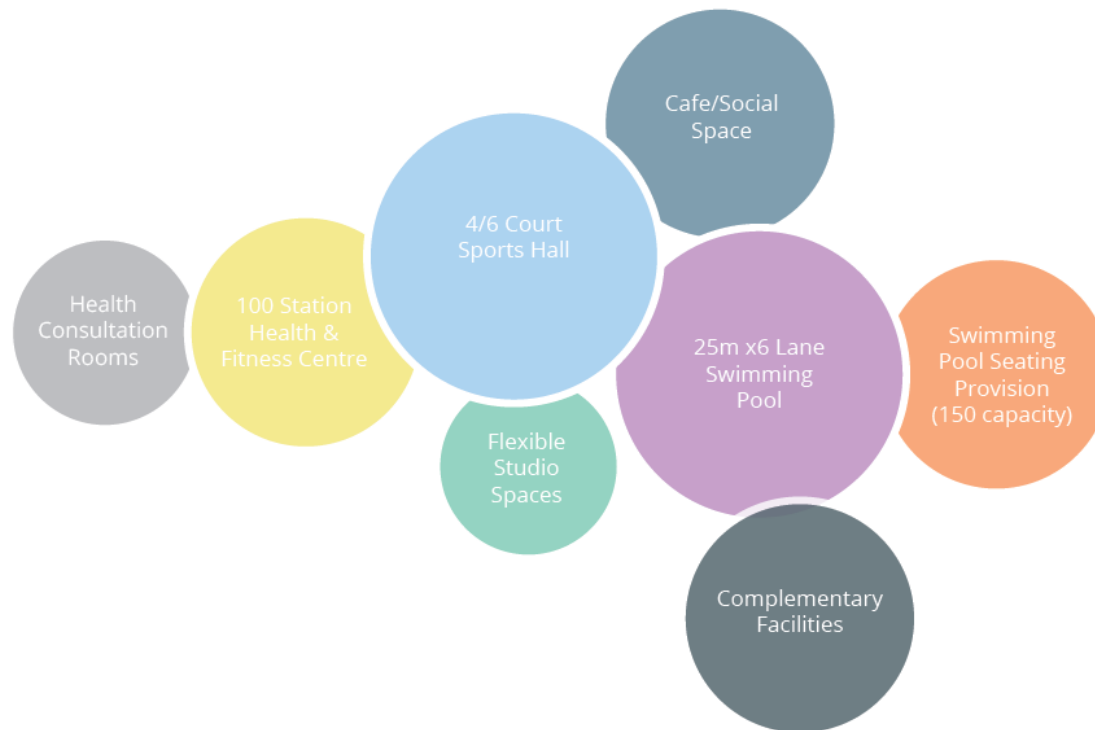


Halton Leisure Centre



1.1 BRIEF

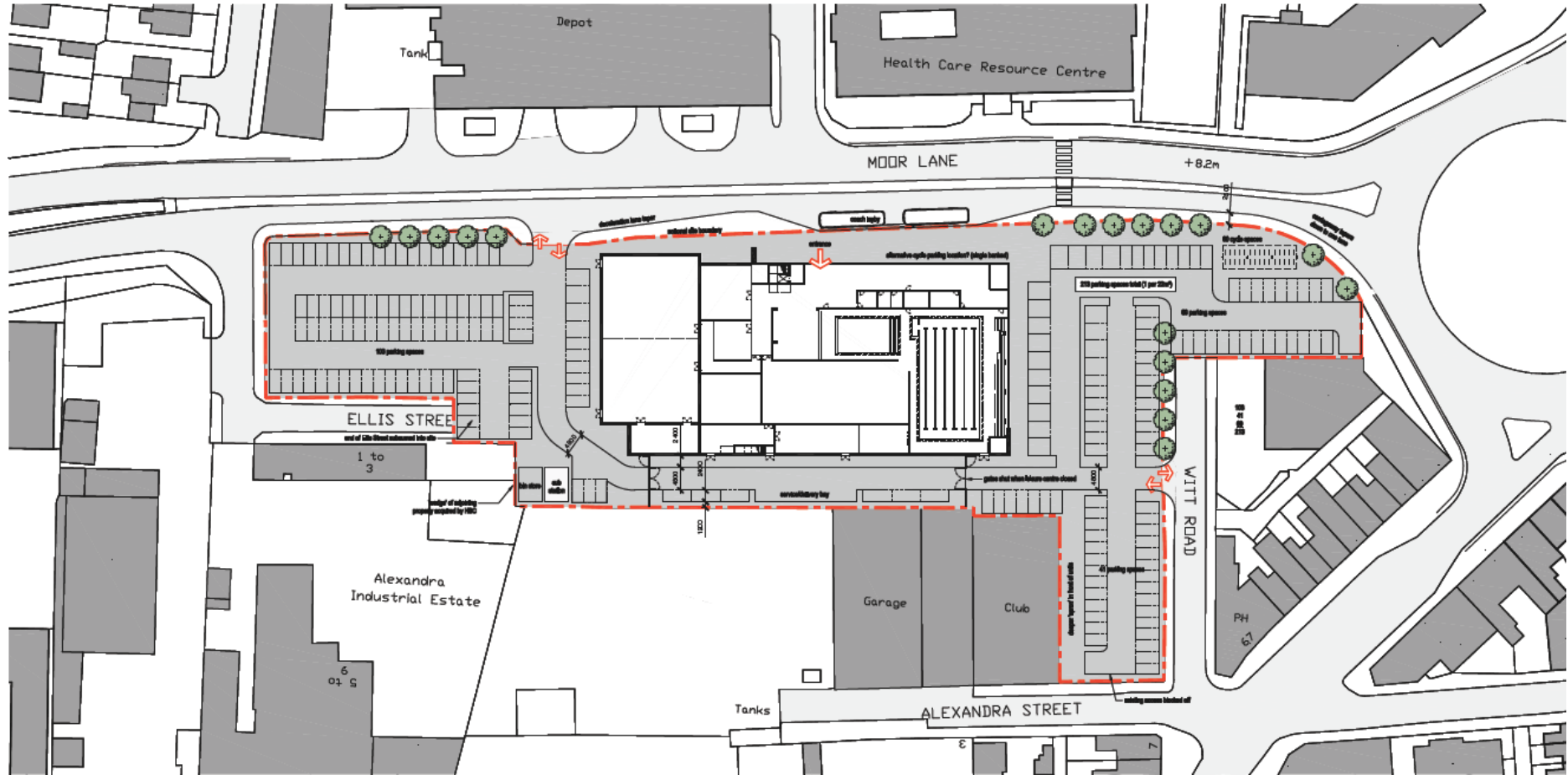
Kingsway Leisure Centre is the hub leisure site in the Authority which offers a range of activities and currently hosts a number of sports clubs, including Halton Swimming Club. HBC should replace Kingsway to provide a modern hub facility for Halton which should feature the following:

- 25m x6 lane swimming pool with a learner pool
- Circa 150 swimming pool seating provision
- 100 station health & fitness provision
- 4/6 court sports hall
- A minimum of 2 multi-purpose/flexible studio spaces
- Complementary Facilities
- Health consultation rooms
- Cafe/social space

Swimming pool provision should be replaced on a like for like basis to provide an attractive base for Halton Swimming Club and the local authority's learn to swim programme. Providing seating will also ensure the facility can support regular swimming competitions, supporting the performance requirements of the club.

Current sports hall provision is proposed to be replaced on a slightly reduced basis in order to retain a central day-time accessible community sports hall in the Borough. Dry side spaces at Kingsway should be augmented by flexible studio and activity provision which will be appropriate in respect of addressing the issue of inactivity in Halton. Complementary facilities such as clip and climb/soft play meanwhile could provide regular revenue streams to reduce Local Authority subsidy requirements and this will need to be explored further.

2.1 PROPOSED SITE PLAN



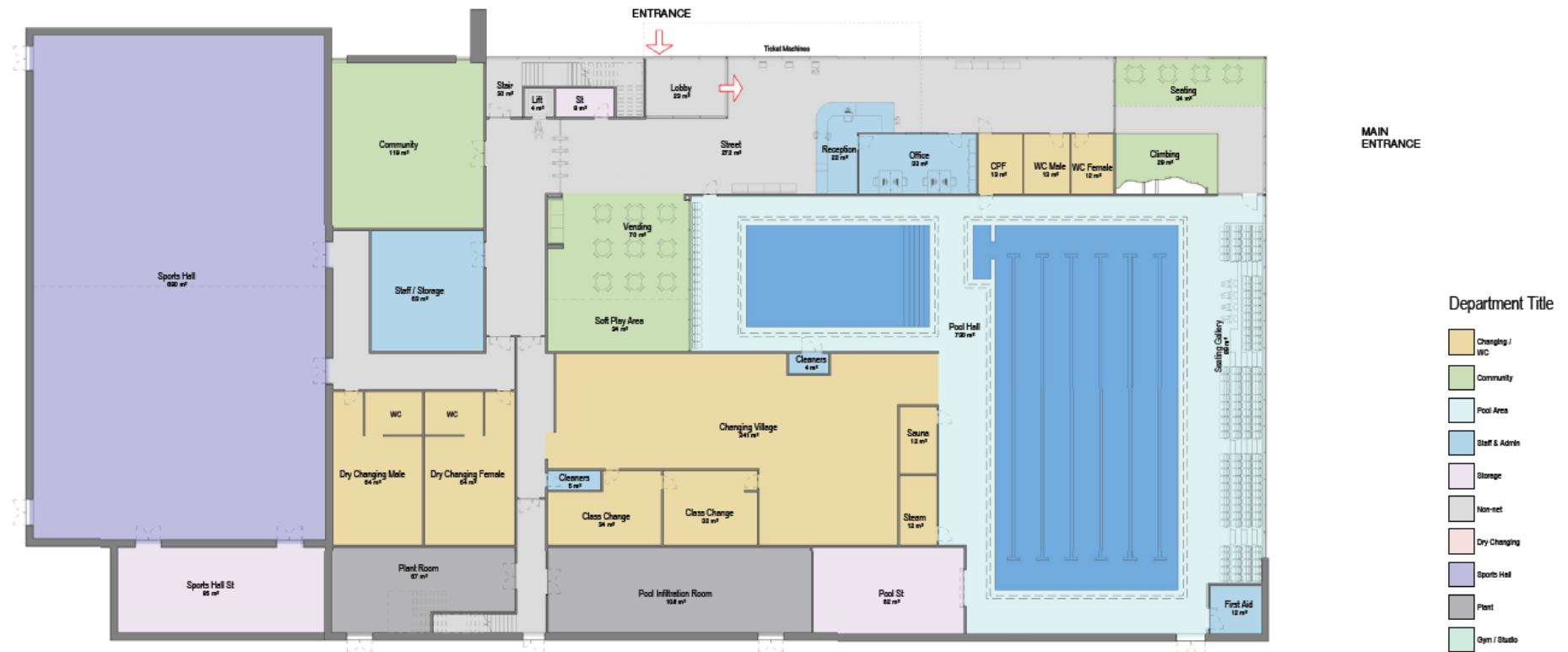
2.2 GROUND FLOOR PLAN

Ground Floor GIA = 3281m²

First Floor GIA = 1247m²

Total GIA = 4528m²

Circulation as 12.5% of GIA



2.3 FIRST FLOOR PLAN

Ground Floor GIA = 3281m²

First Floor GIA = 1247m²

Total GIA = 4528m²

Circulation as 12.5% of GIA



