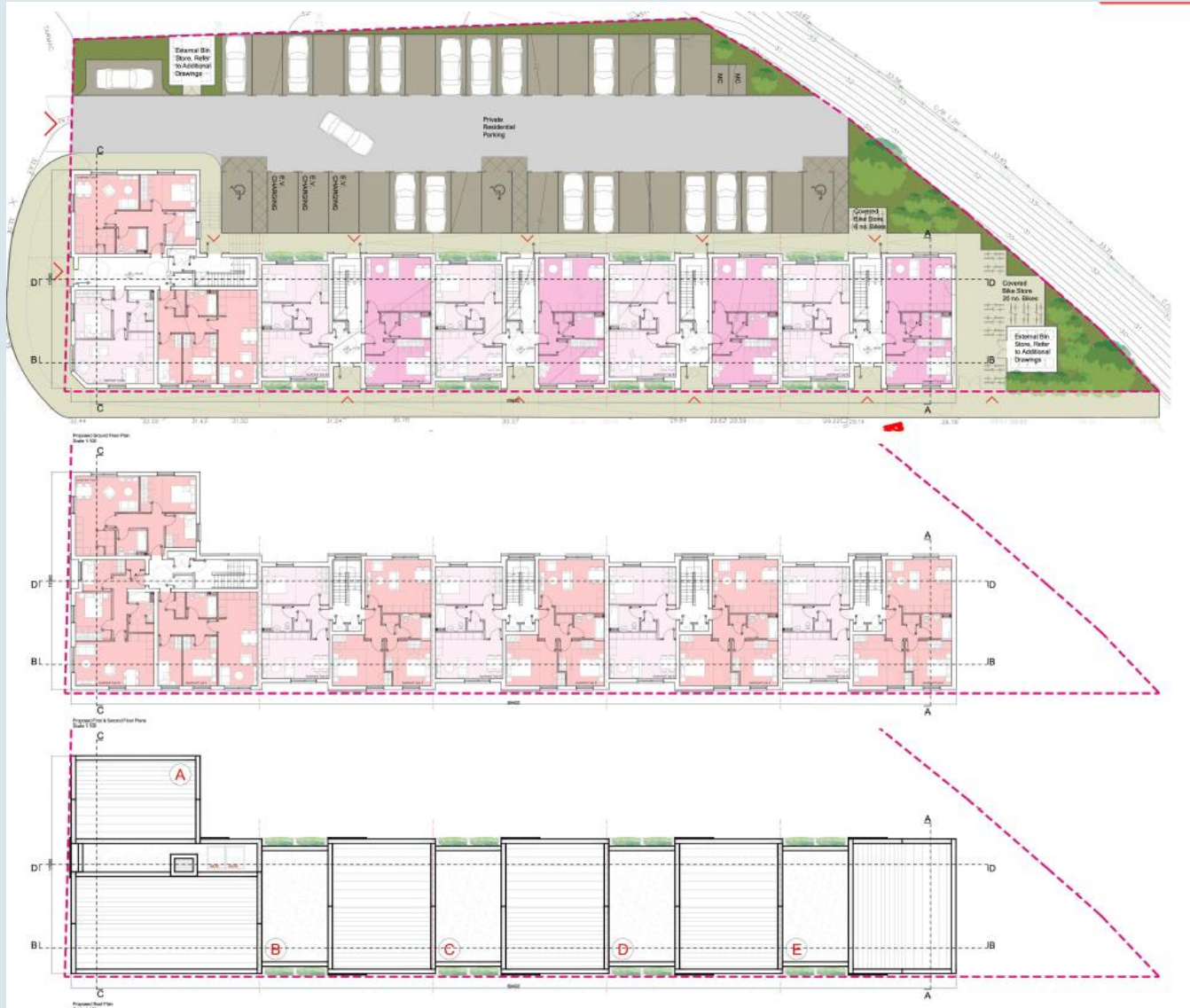






Crown copyright and database rights [2022] Ordnance Survey 100018552





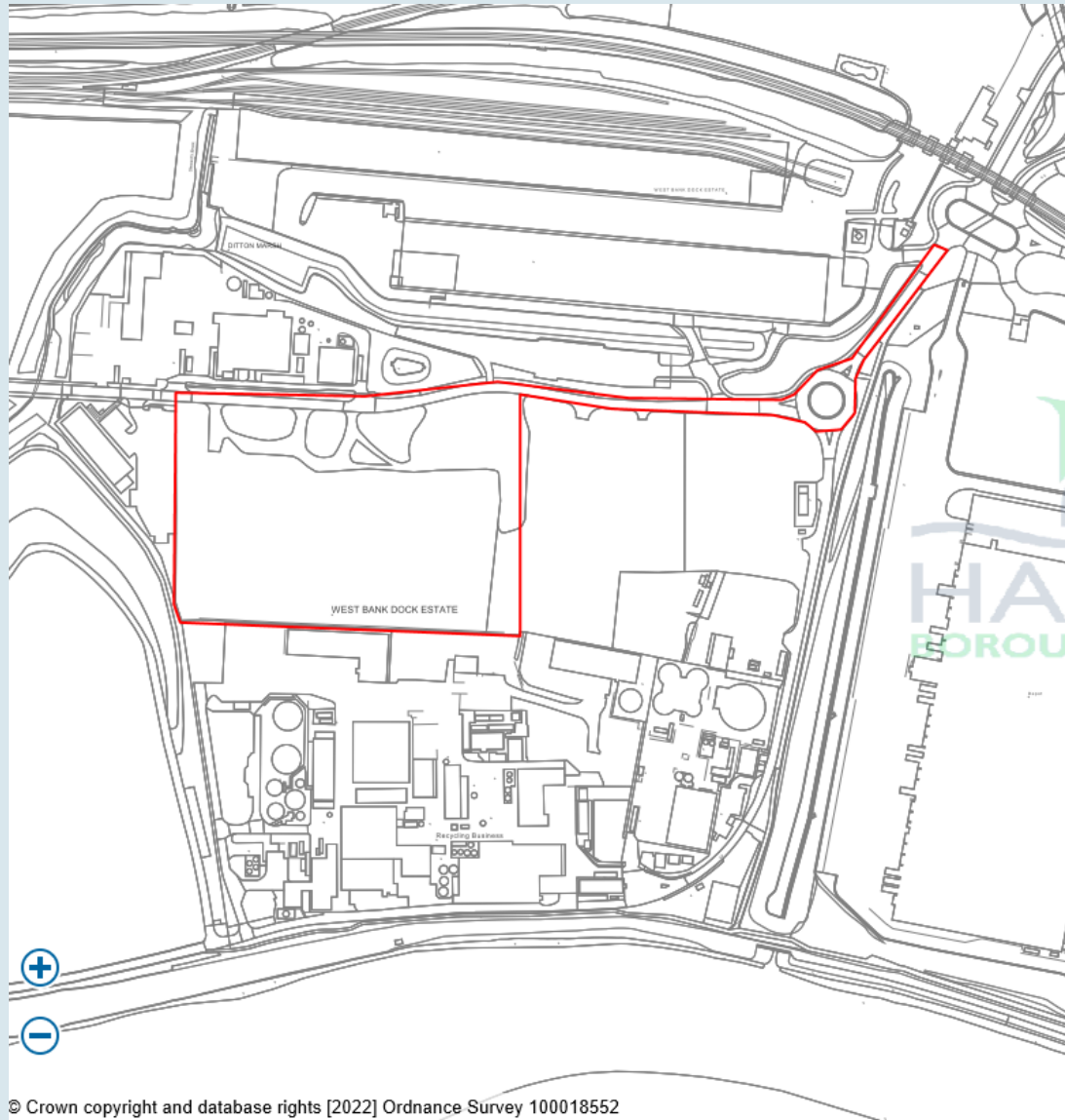


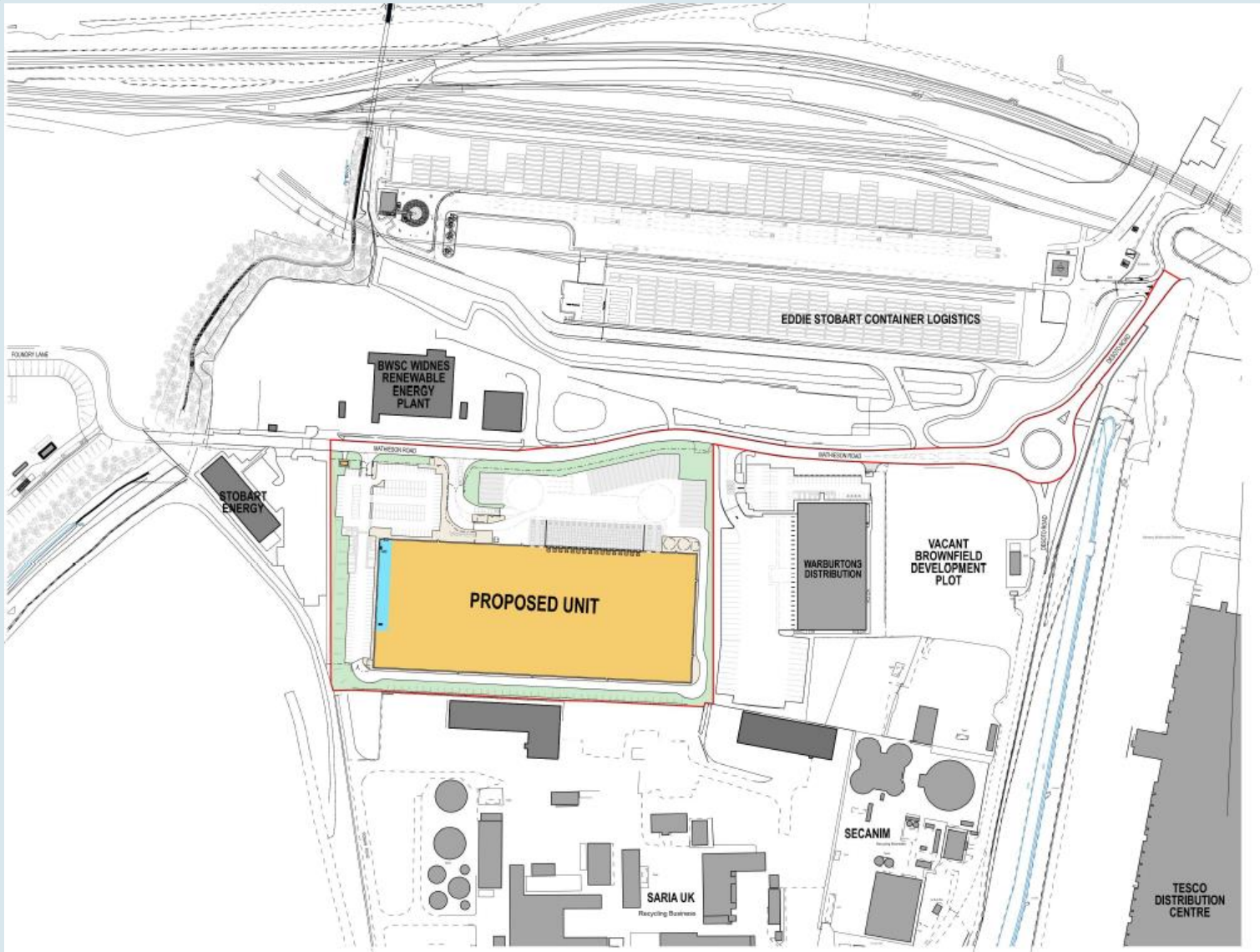




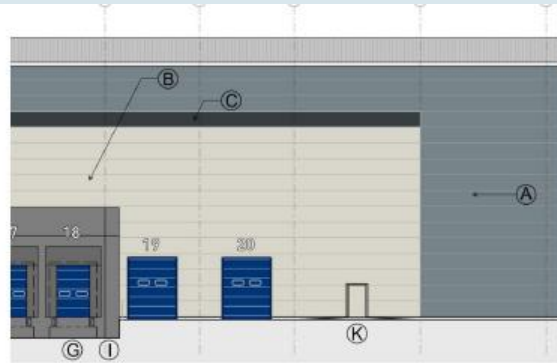








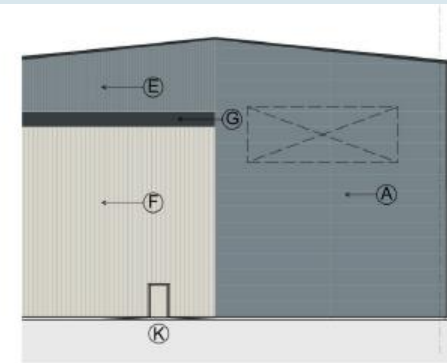




**NORTH ELEVATION (PART)**



**WEST ELEVATION (PART)**



**EAST ELEVATION (PART)**



**A** MICRORIB COMPOSITE CLADDING ALASKA GREY (RAL 7003)



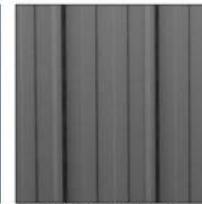
**B** MICRORIB COMPOSITE CLADDING HAMLET (RAL 9002)



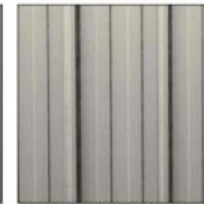
**C** MICRORIB COMPOSITE CLADDING ANTHRACITE (RAL 7016)



**D** MICRORIB COMPOSITE CLADDING BLUE



**E** VERTICALLY PROFILED CLADDING ALASKA GREY (RAL 7003)



**F** VERTICALLY PROFILED CLADDING HAMLET (RAL 9002)



**G** TRIMS & FLASHINGS ANTHRACITE (RAL 7016)



**H** RAINWATER PIPES TO SUIT CLADDING



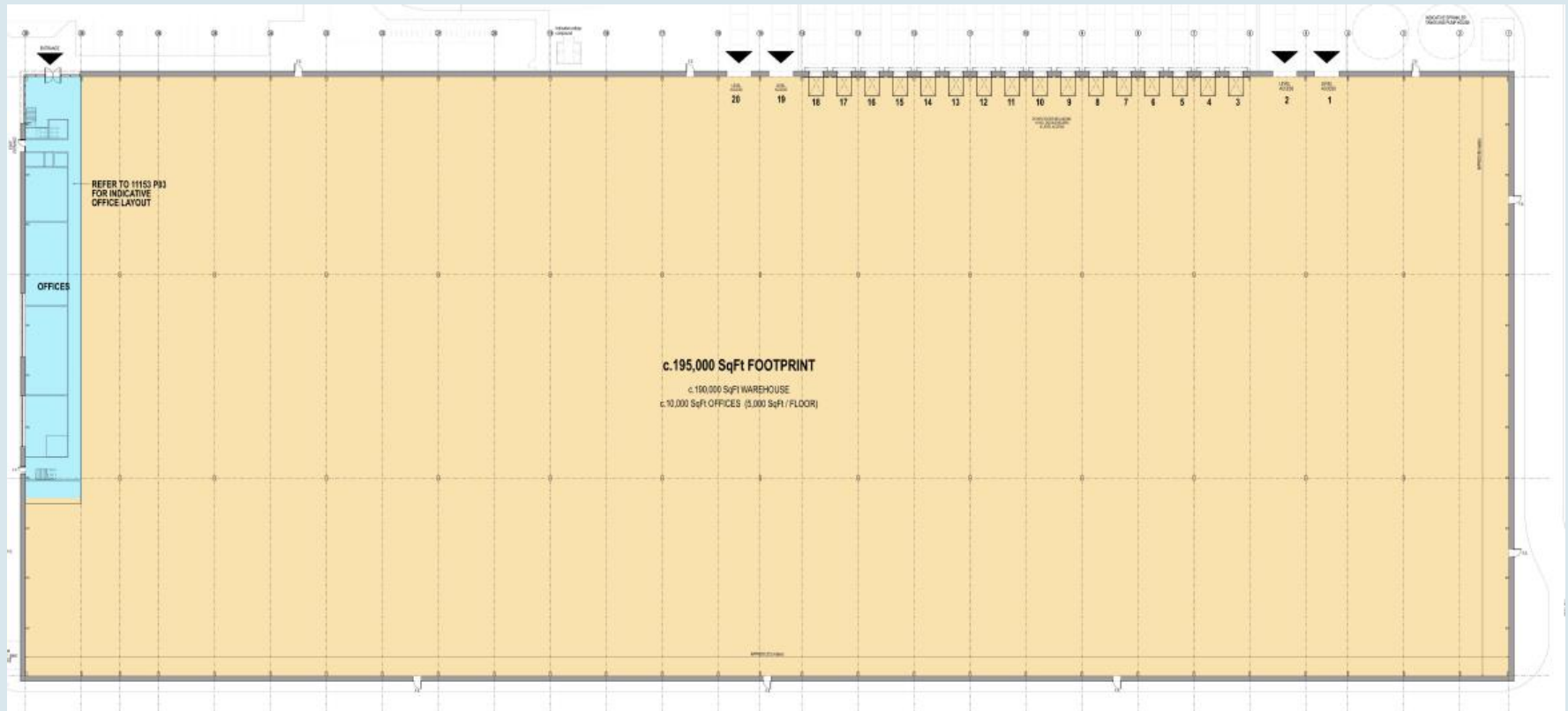
**I** CONCRETE DOCK WALL & DOCK SEAL



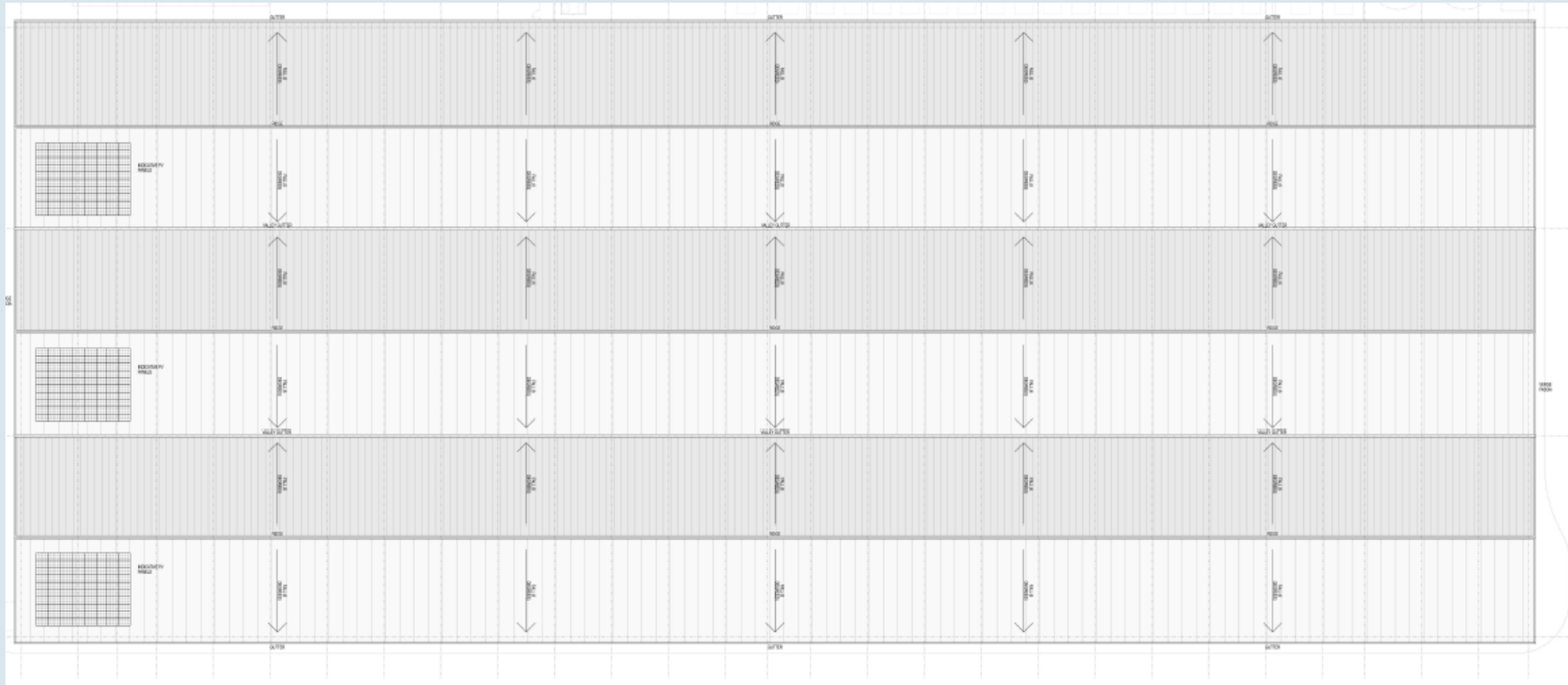
**J** POWDER COATED ALUMINIUM GLAZING SYSTEMS ANTHRACITE (RAL 7016)



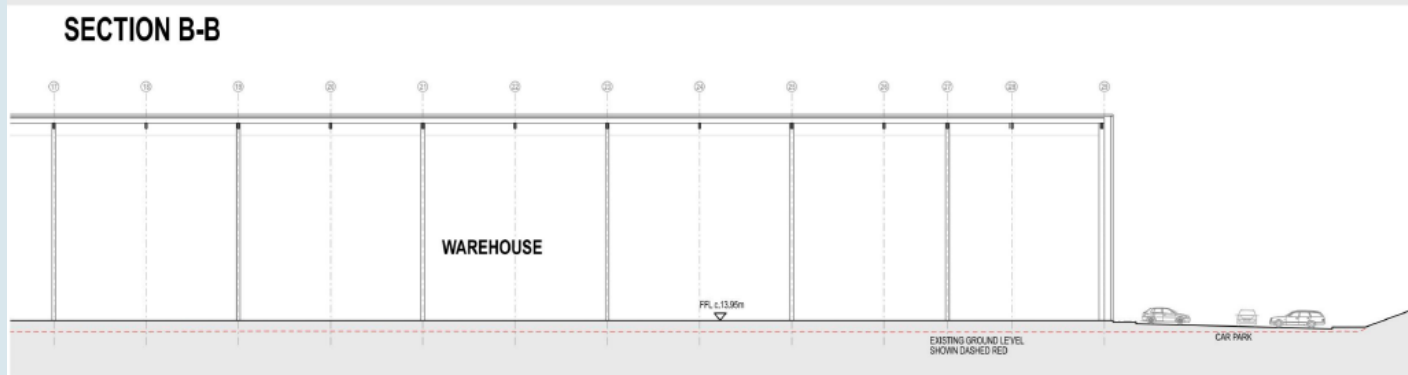
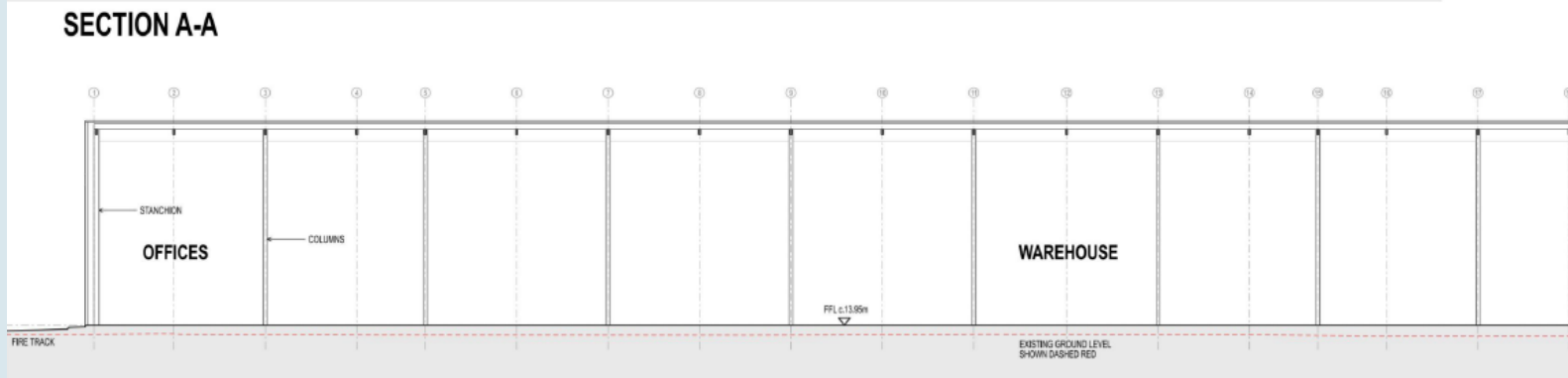
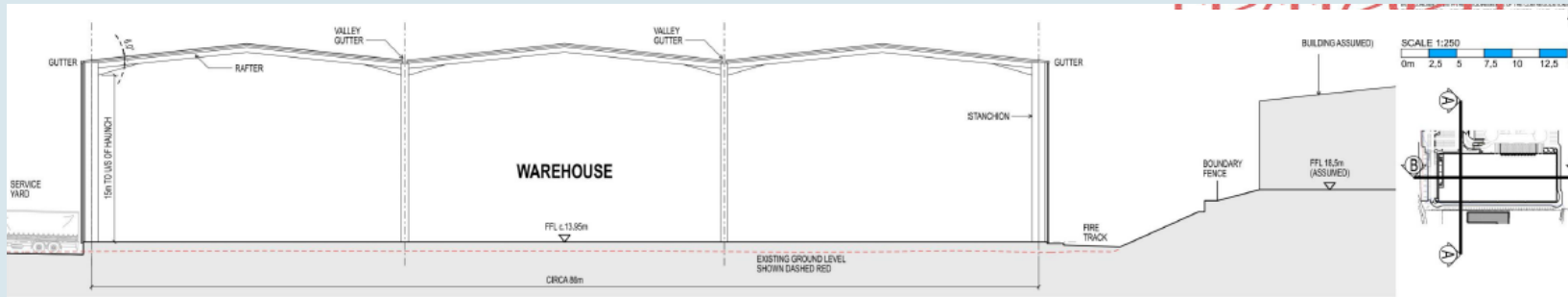
**K** POWDER COATED STEEL DOORSET COLOUR TO MATCH CLADDING, SUBJECT TO LOCATION

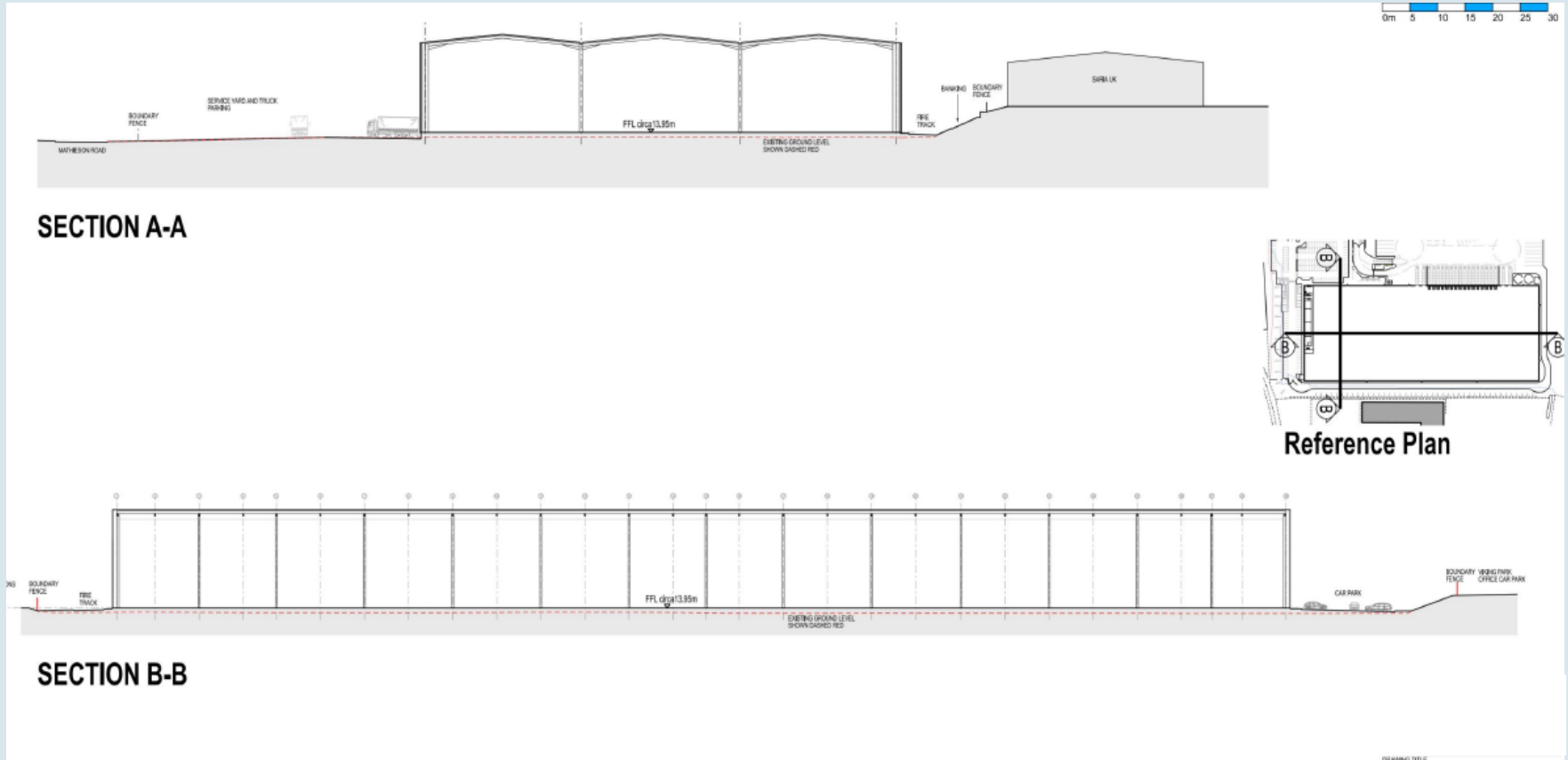














Copyright Bluesky