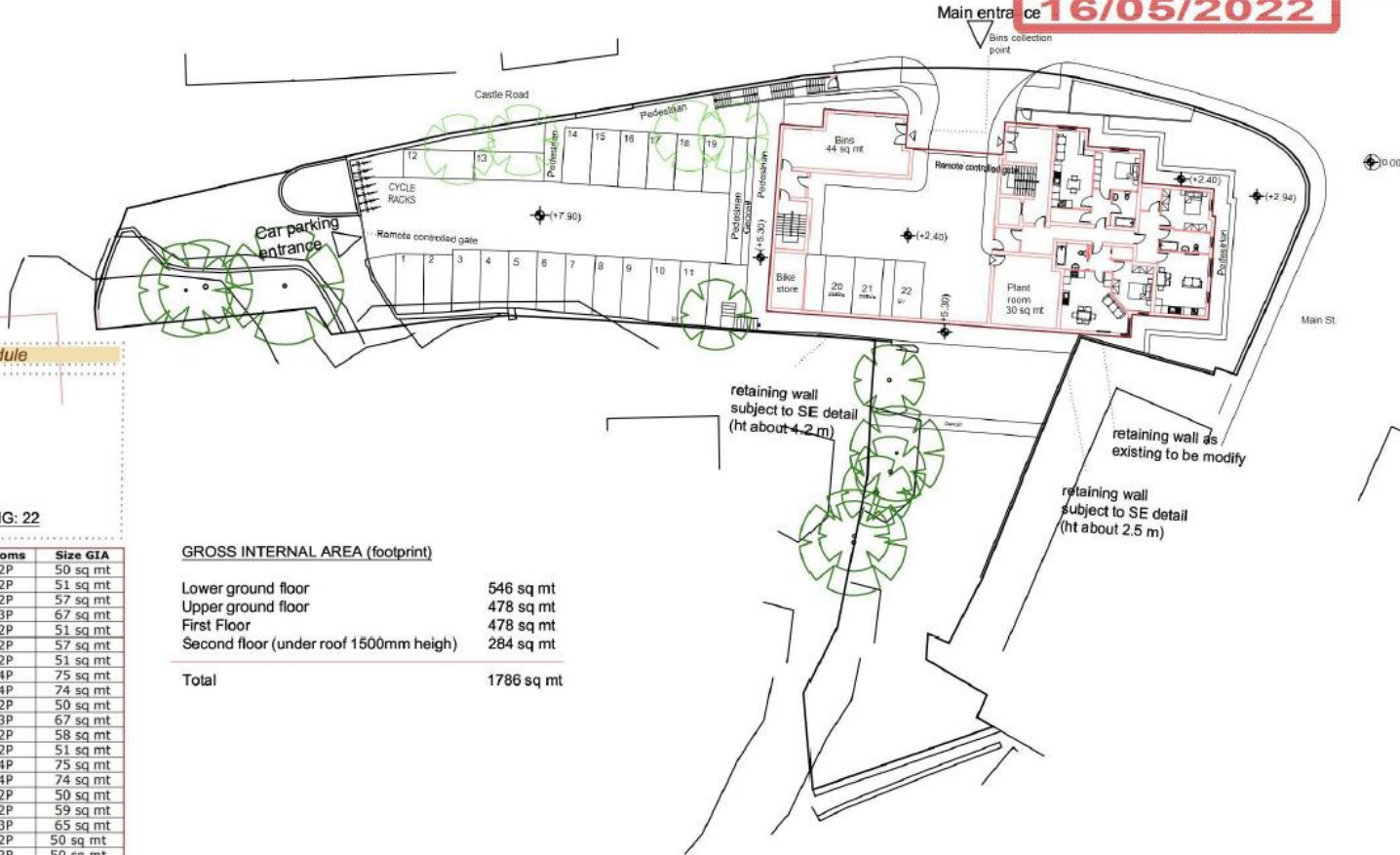


Amended

2200015/FUL

16/05/2022



Schedule

UNITS:
n. 13 1B/2P
n. 4 2B/4P
n. 3 2B/3P

TOT UNITS: 20

TOT CAR PARKING: 22

Apartment	Bedrooms	Size GIA
1	1B/2P	50 sq mt
2	1B/2P	51 sq mt
3	1B/2P	57 sq mt
4	2B/3P	67 sq mt
5	1B/2P	51 sq mt
6	1B/2P	57 sq mt
7	1B/2P	51 sq mt
8	2B/4P	75 sq mt
9	2B/4P	74 sq mt
10	1B/2P	50 sq mt
11	2B/3P	67 sq mt
12	1B/2P	58 sq mt
13	1B/2P	51 sq mt
14	2B/4P	75 sq mt
15	2B/4P	74 sq mt
16	1B/2P	50 sq mt
17	1B/2P	59 sq mt
18	2B/3P	65 sq mt
19	1B/2P	50 sq mt
20	1B/2P	50 sq mt
total		1182 sq mt

GROSS INTERNAL AREA (footprint)

Lower ground floor	546 sq mt
Upper ground floor	478 sq mt
First Floor	478 sq mt
Second floor (under roof 1500mm height)	284 sq mt
Total	1786 sq mt

REV	DESCRIPTION	BY	DATE
H	Scheme updates	EJG/II	14/04/22 20/04/22
E	Scheme updates	EJG/II	06/12/21
D	Scheme updates	EJG/II	30/11/21
C	Scheme updates	EJG/II	10/09/2021
B	Scheme updates	EJG	27/08/2021
A	Scheme updates	VK	12/07/2021



PROJECT
PROPOSED DEVELOPMENT, FORMER PANORAMA HOTEL, MAIN STREET, CASTLE ROAD, HALTON RUNCORN WA72BE

CLIENT
Kingscrown Land & Commercial

TITLE
PROPOSED SITE PLAN

DRAWN	DRG No.
EJG/II	14,827
DATE	
26/04/22	01
SCALE	AMENDMENT
1:300@A3	I

Amended

2200015FUL

16/05/2022



Cover

I	scheme updates	EJG/II	26/04/22
H	scheme updates	EJG/II	20/04/22
G	scheme updates	EJG/II	14/04/22
E	scheme updates	EJG/II	06/12/21
D	scheme updates	EJG/II	30/11/21
C	scheme updates	EJG/II	13/09/21
B	scheme updates	EJG	26/08/21
Rev	DESCRIPTION	By	Date



HOWARD & SEDDON A.R.I.B.A.
CHARTERED ARCHITECTS
64 WASHWAY ROAD
SAIL, CHESHIRE, M33 7RE
TEL NO. 0161 - 973 8296
FAX NO. 0161 - 962 3483
E-MAIL : ADMIN@HOWARDANDEDSON.CO.UK

Project
PROPOSED DEVELOPMENT, FORMER
PANORAMA HOTEL MAIN STEET, CASTLE
ROAD, HALTON RUNCORN WA72BE

Client
Kingscrown Land & Commercial

Title
COVER

PROGRESS DRAWING

This drawing is not intended to be used for contract pricing or fabrication purposes, nor content is subject to change.

Drawn EJG/II	DRG no. 14,827
Date 13/05/22	00
Scale X (A3)	Amendment L

Amended

2200015FUL

16/05/2022



VIEWS

r	scheme updates	EJG/II	26/04/22
H	scheme updates	EJG/II	20/04/22
G	scheme updates	EJG/II	14/04/22
E	scheme updates	EJG/II	06/12/21
D	scheme updates	EJG/II	30/11/21
C	scheme updates	EJG/II	13/09/21
A	scheme updates	EJG	26/08/21
Rev	DESCRIPTION	By	Date



HOWARD & SEDDON A.R.I.B.A.
CHARTERED ARCHITECTS
64 WASHWAY ROAD
SALT, CHESHIRE, M33 7RE
TEL NO. 0161 - 973 8296
FAX NO. 0161 - 962 3483
E-MAIL: ADMIN@HOWARDANDEDSON.CO.UK

Project
PROPOSED DEVELOPMENT, FORMER
PANORAMA HOTEL MAIN STEET, CASTLE
ROAD, HALTON RUNCORN WA72BE

Client
Kingscrown Land & Commercial

Title
VIEWS

PROGRESS DRAWING	
<small>This drawing is not intended to be used for contract pricing or fabrication purposes, nor content is subject to change.</small>	
Drawn EJG/II	DRG no. 14,827
Date 13/05/22	14
Scale X(A3)	Amendment L

Amended

2200015FUL

16/05/2022



VIEWS

I	scheme updates	EJG/II	26/04/22
H	scheme updates	EJG/II	20/04/22
G	scheme updates	EJG/II	14/04/22
E	scheme updates	EJG/II	06/12/21
D	scheme updates	EJG/II	30/11/21
C	scheme updates	EJG/II	13/09/21
B	scheme updates	EJG	26/08/21
Rev	DESCRIPTION	By	Date



Project
PROPOSED DEVELOPMENT, FORMER
PANORAMA HOTEL MAIN STEET, CASTLE
ROAD, HALTON RUNCORN WA72BE
Client
Kingscrown Land & Commercial

Title
VIEWS

PROGRESS DRAWING

This drawing is not intended to be used for contract pricing or fabrication purposes, we reserve the right to change.

Drawn EJG/II	DRG no. 14,827
Date 13/05/22	Scale 15
Scale X(A3)	Amendment L



Amended

2200015FUL

16/05/2022

VIEWS

i	scheme updates	EJG/II	26/04/22
H	scheme updates	EJG/II	20/04/22
G	scheme updates	EJG/II	14/04/22
E	scheme updates	EJG/II	06/12/21
D	scheme updates	EJG/II	30/11/21
C	scheme updates	EJG/II	13/09/21
B	scheme updates	EJG	26/08/21
Rev	DESCRIPTION	By	Date



Project
PROPOSED DEVELOPMENT, FORMER
PANORAMA HOTEL MAIN STREET, CASTLE
ROAD, HALTON RUNCORN WA72BE

Client
Kingscrown Land & Commercial

Title
VIEWS

PROGRESS DRAWING	
<small>This drawing is not intended to be used for contract pricing or fabrication purposes. All comments are subject to change.</small>	
Drawn EJG/II	DRG no. 14,827
Date 13/05/22	30
Scale X(A3)	Amendment L



VIEWS

I	scheme updates	EJG/II	26/04/22
H	scheme updates	EJG/II	20/04/22
G	scheme updates	EJG/II	14/04/22
E	scheme updates	EJG/II	06/12/21
D	scheme updates	EJG/II	30/11/21
C	scheme updates	EJG/II	13/09/21
B	scheme updates	EJG	26/08/21
Rev	DESCRIPTION	By	Date



Project
PROPOSED DEVELOPMENT, FORMER
PANORAMA HOTEL MAIN STEET, CASTLE
ROAD, HALTON RUNCORN WA72BE

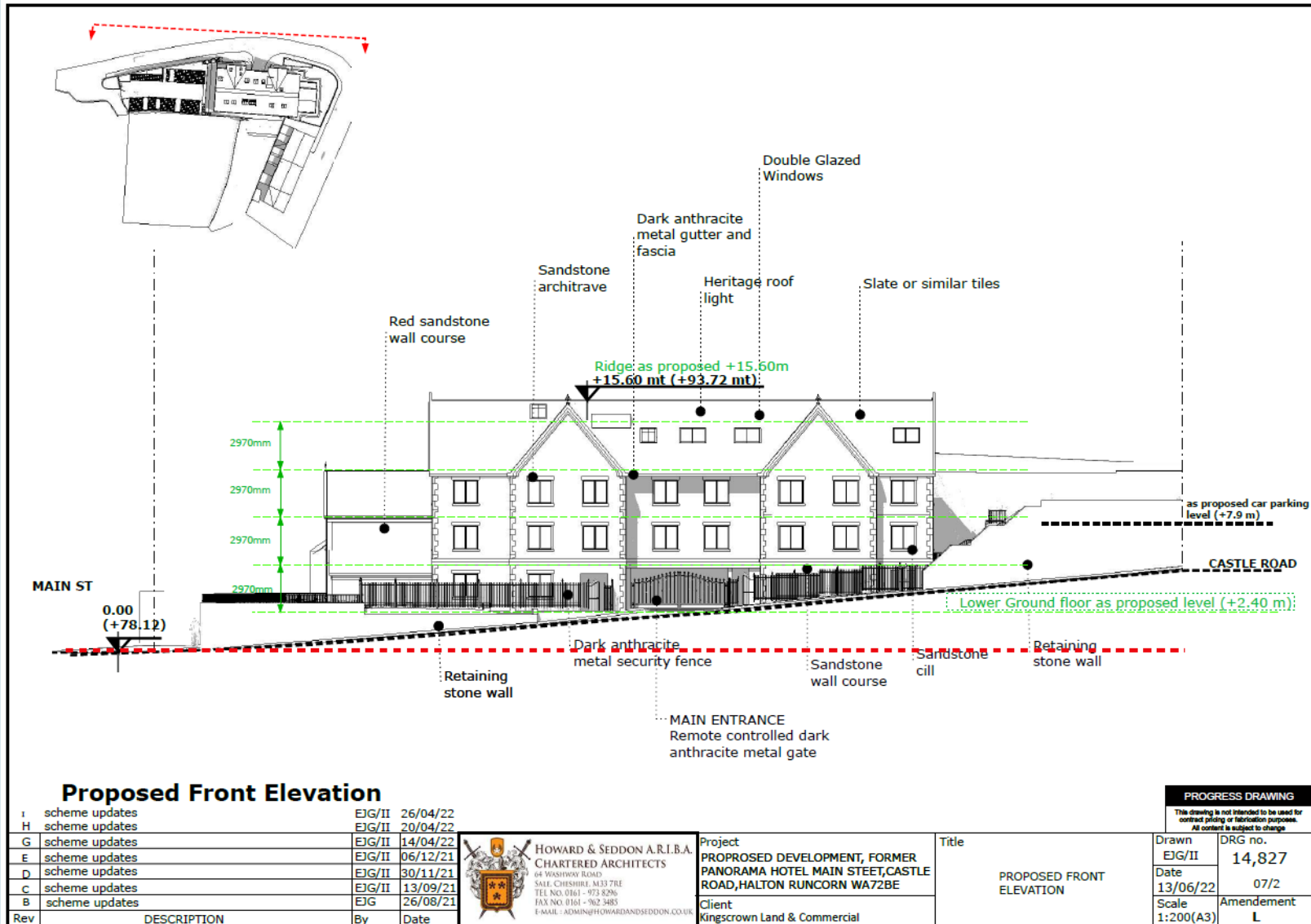
Client
Kingscrown Land & Commercial

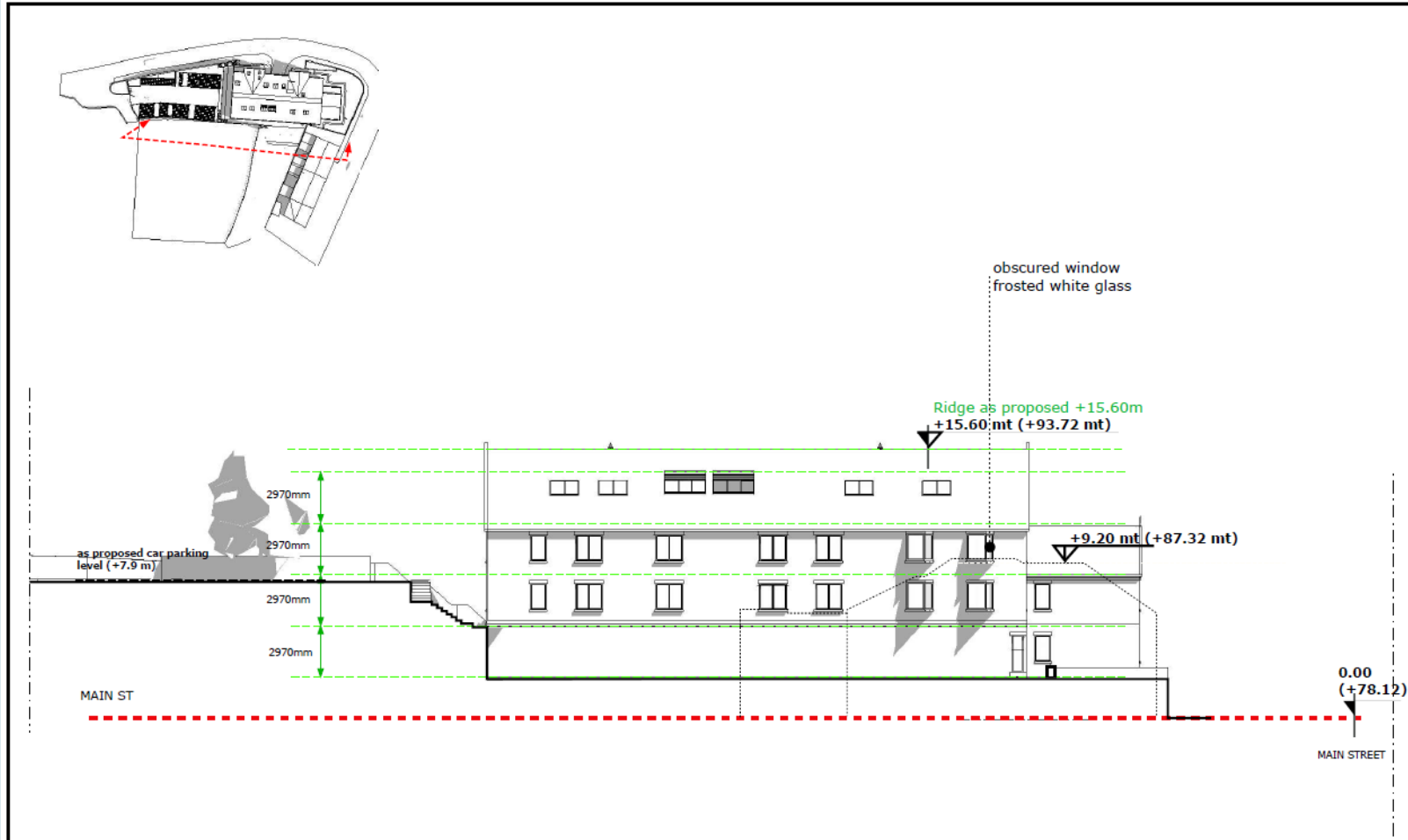
Title
VIEWS

PROGRESS DRAWING

This drawing is not intended to be used for contract pricing or fabrication purposes. All content is subject to change.

Drawn EJG/II	DRG no. 14,827
Date 13/05/22	26
Scale X(A3)	Amendment L





Proposed Rear Elevation

Rev	DESCRIPTION	By	Date
I	scheme updates	EJG/II	26/04/22
H	scheme updates	EJG/II	20/04/22
G	scheme updates	EJG/II	14/04/22
E	scheme updates	EJG/II	06/12/21
D	scheme updates	EJG/II	30/11/21
C	scheme updates	EJG/II	13/09/21
B	scheme updates	EJG	26/08/21

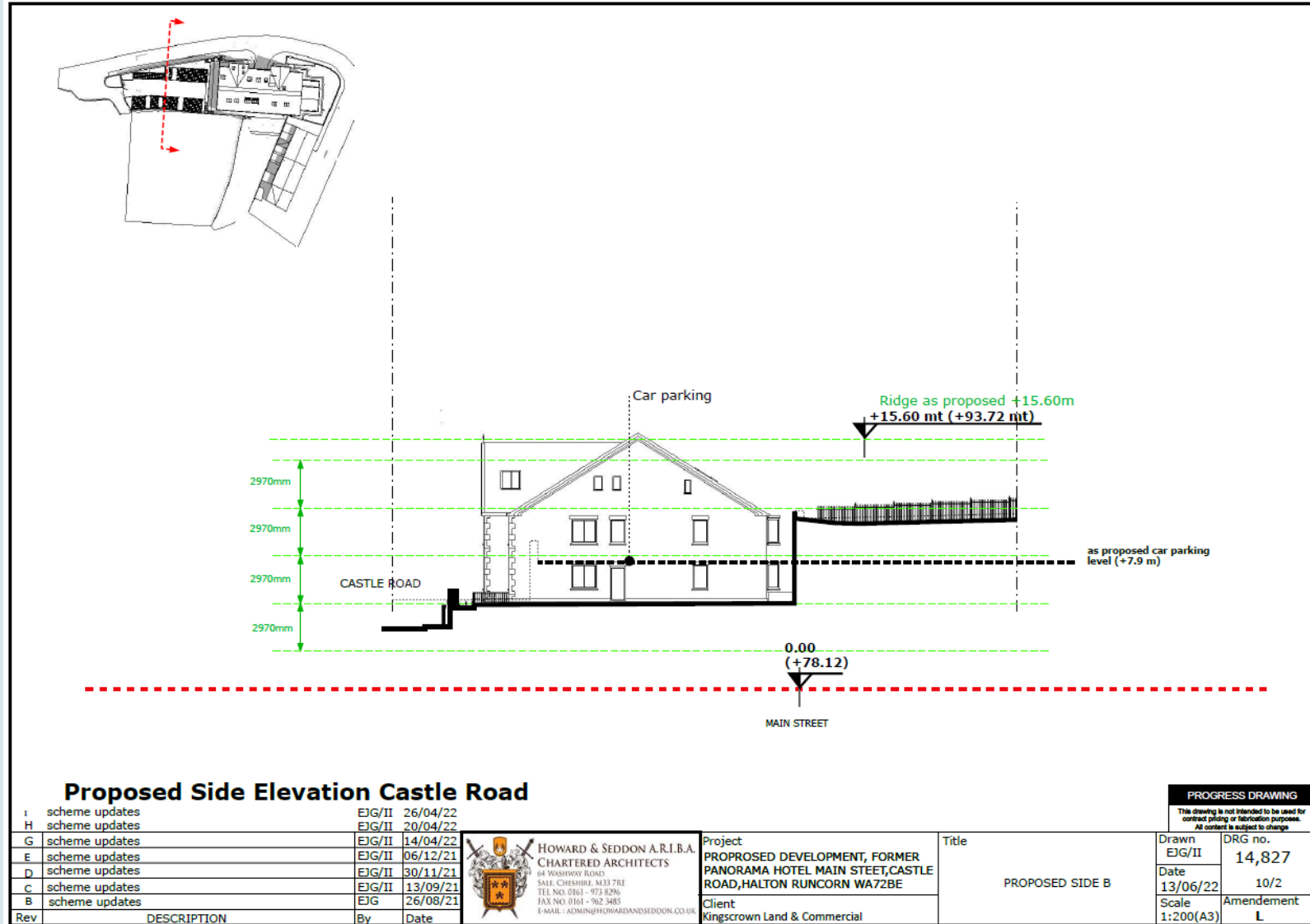


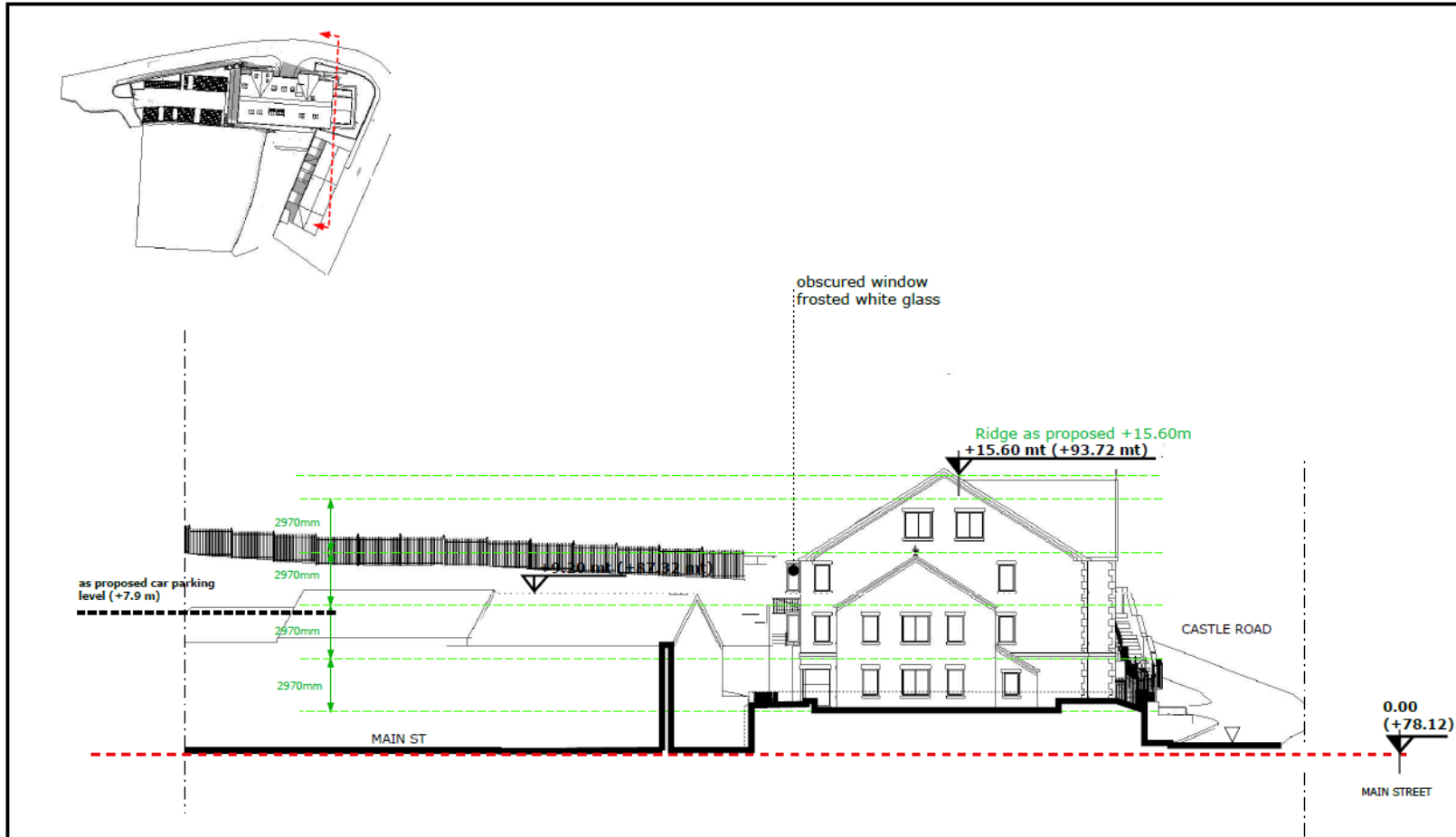
Project
PROPOSED DEVELOPMENT, FORMER
PANORAMA HOTEL MAIN STEET, CASTLE
ROAD, HALTON RUNCORN WA72BE

Client
Kingscrown Land & Commercial

Title
PROPOSED REAR
ELEVATION

PROGRESS DRAWING	
<small>This drawing is not intended to be used for contract pricing or fabrication purposes. All content is subject to change</small>	
Drawn EGJ/II	DRG no. 14,827
Date 13/06/22	08/2
Scale 1:200(A3)	Amendment L





Proposed Side Elevation Main Street

I	scheme updates	EJG/II	26/04/22
H	scheme updates	EJG/II	20/04/22
G	scheme updates	EJG/II	14/04/22
E	scheme updates	EJG/II	06/12/21
D	scheme updates	EJG/II	30/11/21
C	scheme updates	EJG/II	13/09/21
B	scheme updates	EJG	26/08/21
Rev	DESCRIPTION	By	Date



HOWARD & SEDDON A.R.I.B.A.
CHARTERED ARCHITECTS
64 WASHWAY ROAD
SALT, CHESHIRE, M33 7RE
TEL NO. 0161 - 972 8296
FAX NO. 0161 - 902 3485
E-MAIL : ADMIN@HOWARDANDEDSON.CO.UK

Project	PROPOSED DEVELOPMENT, FORMER PANORAMA HOTEL MAIN STREET, CASTLE ROAD, HALTON RUNCORN WA72BE
Client	Kingscrown Land & Commercial

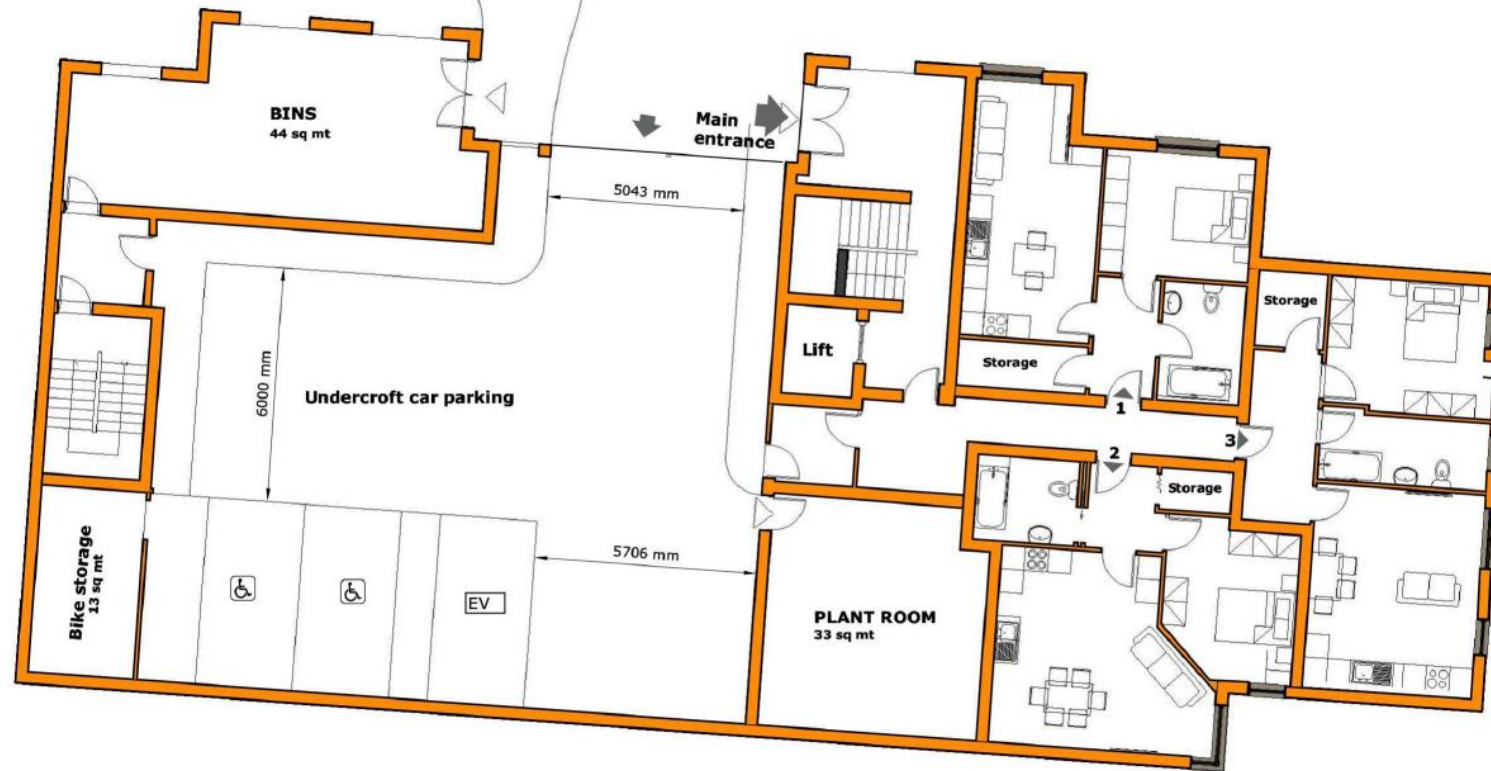
Title	PROPOSED SIDE A
-------	-----------------

PROGRESS DRAWING	
<small>This drawing is not intended to be used for contract pricing or fabrication purposes. All content is subject to change.</small>	
Drawn	DRG no.
EJG/II	14,827
Date	
13/06/22	09/2
Scale	Amendment
1:200(A3)	L

Amended

2200015FUL

16/05/2022



Lower Ground floor plan

I	scheme updates	EJG/II	26/04/22
H	scheme updates	EJG/II	20/04/22
G	scheme updates	EJG/II	14/04/22
E	scheme updates	EJG/II	06/12/21
D	scheme updates	EJG/II	30/11/21
C	scheme updates	EJG/II	13/09/21
B	scheme updates	EJG	26/08/21
Rev	DESCRIPTION	By	Date



Project
PROPOSED DEVELOPMENT, FORMER
PANORAMA HOTEL MAIN STEET, CASTLE
ROAD, HALTON RUNCORN WA7 2BE
Client
Kingscrown Land & Commercial

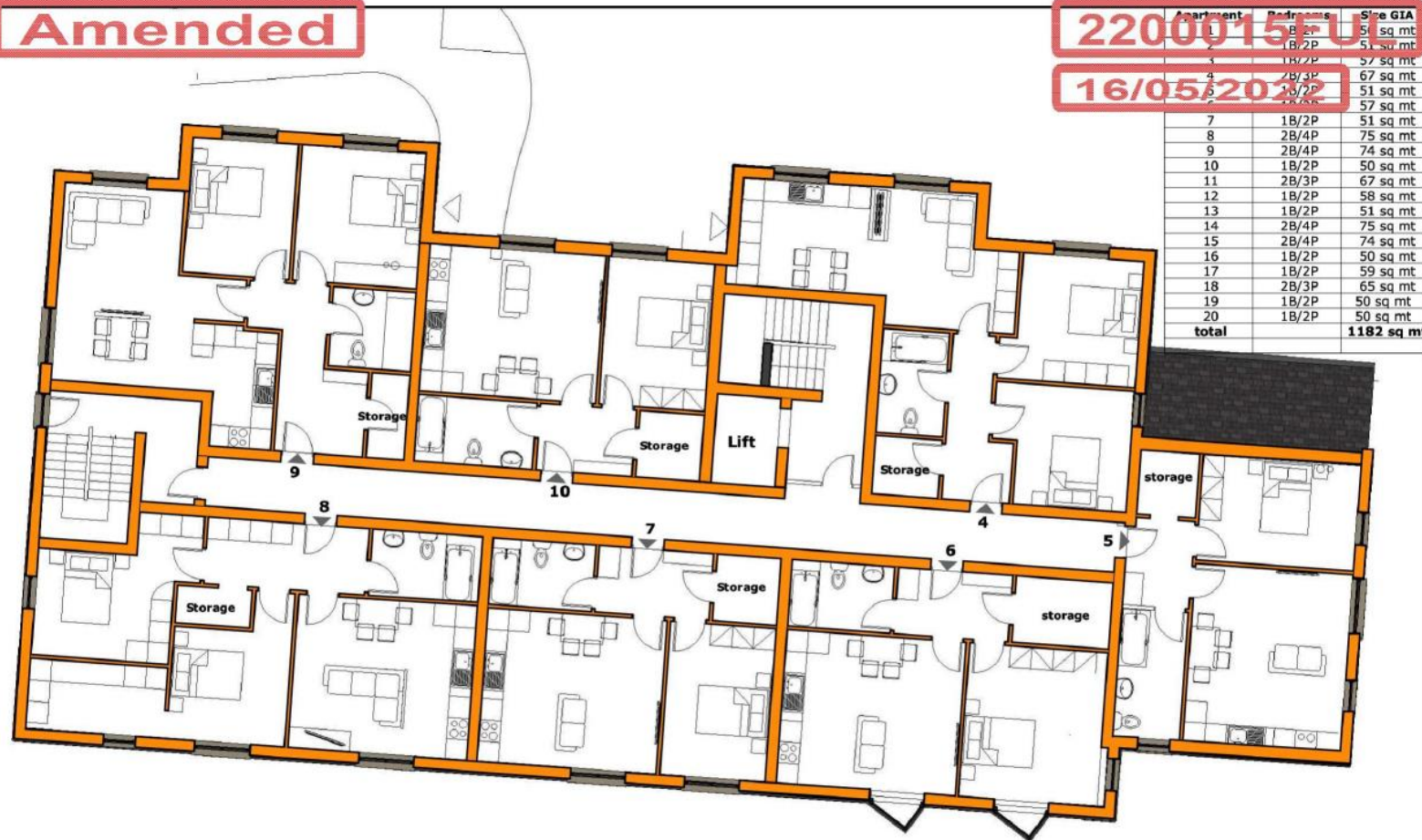
Title
Lower ground floor
plan

PROGRESS DRAWING	
<small>This drawing is not intended to be used for contract pricing or fabrication purposes. It is correct as subject to change.</small>	
Drawn EJG/II	DRG no. 14,827
Date 13/05/22	2
Scale 1:100(A3)	Amendment L

Amended

22/00015/FUL

16/05/2022



Upper Ground floor plan

I	scheme updates	EJG/II	26/04/22
H	scheme updates	EJG/II	20/04/22
G	scheme updates	EJG/II	14/04/22
E	scheme updates	EJG/II	06/12/21
D	scheme updates	EJG/II	30/11/21
C	scheme updates	EJG/II	13/09/21
B	scheme updates	EJG	26/08/21
Rev	DESCRIPTION	By	Date



Project
PROPOSED DEVELOPMENT, FORMER
PANORAMA HOTEL MAIN STEET, CASTLE
ROAD, HALTON RUNCORN WA72BE

Client
Kingscrown Land & Commercial

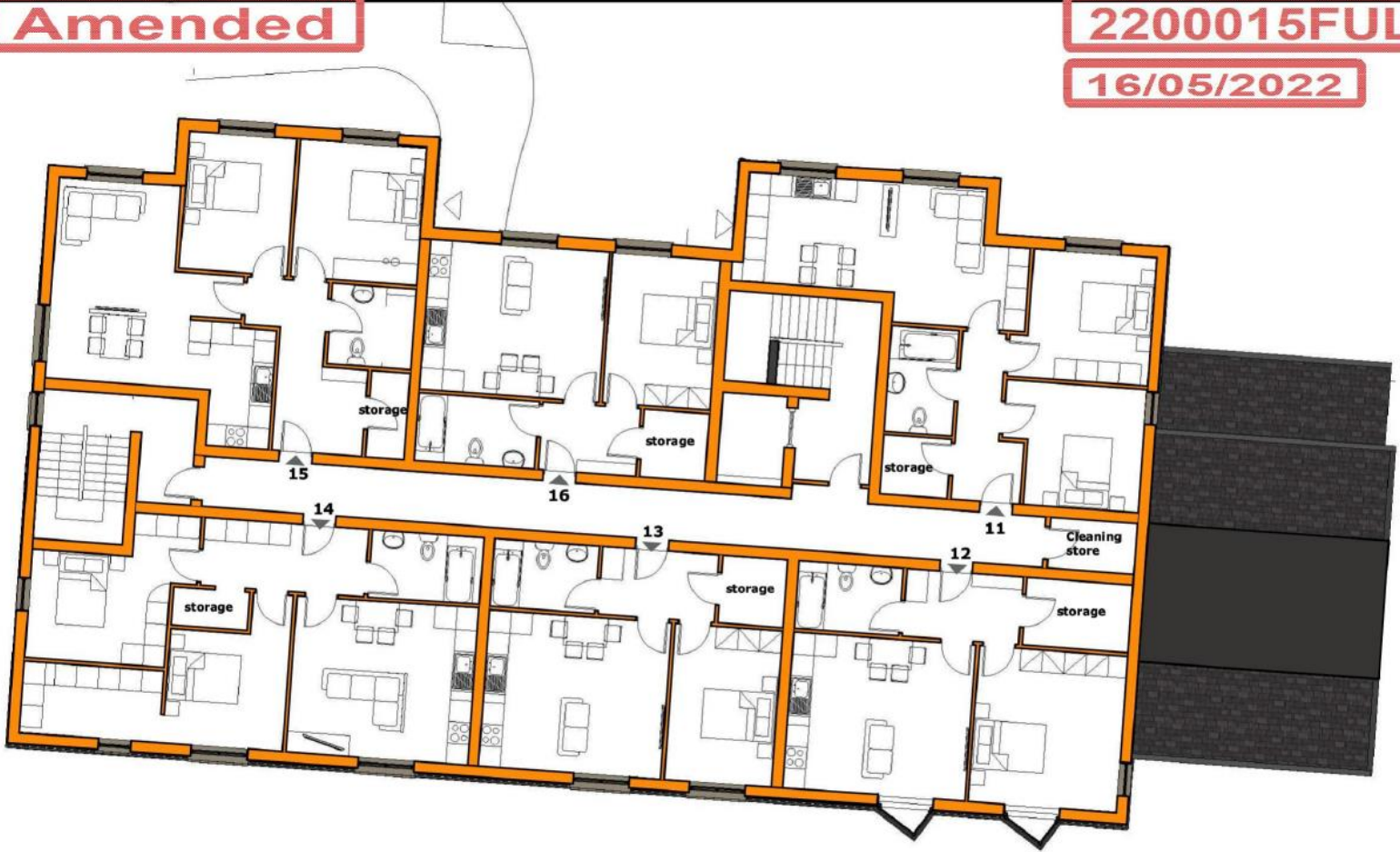
Title
upper ground floor
plan

PROGRESS DRAWING	
This drawing is not intended to be used for contract pricing or fabrication purposes. No contract is subject to change	
Drawn EJG/II	DRG no. 14,827
Date 13/05/22	3
Scale 1:100(A3)	Amendment L

Amended


2200015FUL

16/05/2022



First floor plan

Rev	DESCRIPTION	By	Date
I	scheme updates	EJG/II	26/04/22
H	scheme updates	EJG/II	20/04/22
G	scheme updates	EJG/II	14/04/22
E	scheme updates	EJG/II	06/12/21
D	scheme updates	EJG/II	30/11/21
C	scheme updates	EJG/II	13/09/21
B	scheme updates	EJG	26/08/21



HOWARD & SEDDON A.R.I.B.A.
CHARTERED ARCHITECTS
04 WASHWOOD ROAD
SALF, CHESHIRE, M33 7RE
TEL NO. 0161 - 973 8296
FAX NO. 0161 - 962 3485
E-MAIL : ADMIN@HOWARDANDEDSON.CO.UK

Project
PROPOSED DEVELOPMENT, FORMER
PANORAMA HOTEL MAIN STREET, CASTLE
ROAD, HALTON RUNCORN WA72BE

Client
Kingscrown Land & Commercial

Title
First floor
plan

PROGRESS DRAWING

This drawing is not intended to be used for
contract pricing or fabrication purposes.
All content is subject to change.

Drawn EJG/II	DRG no. 14,827
Date 13/05/22	4
Scale 1:100(A3)	Amendment L



Amended

2200015FUL

16/05/2022



TOP VIEW

i	scheme updates	EJG/II	26/04/22
H	scheme updates	EJG/II	20/04/22
G	scheme updates	EJG/II	14/04/22
E	scheme updates	EJG/II	06/12/21
D	scheme updates	EJG/II	30/11/21
C	scheme updates	EJG/II	13/09/21
B	scheme updates	EJG	26/08/21
Rev	DESCRIPTION	By	Date



Project
PROPOSED DEVELOPMENT, FORMER
PANORAMA HOTEL MAIN STREET, CASTLE
ROAD, HALTON RUNCORN WA72BE

Client
Kingscrown Land & Commercial

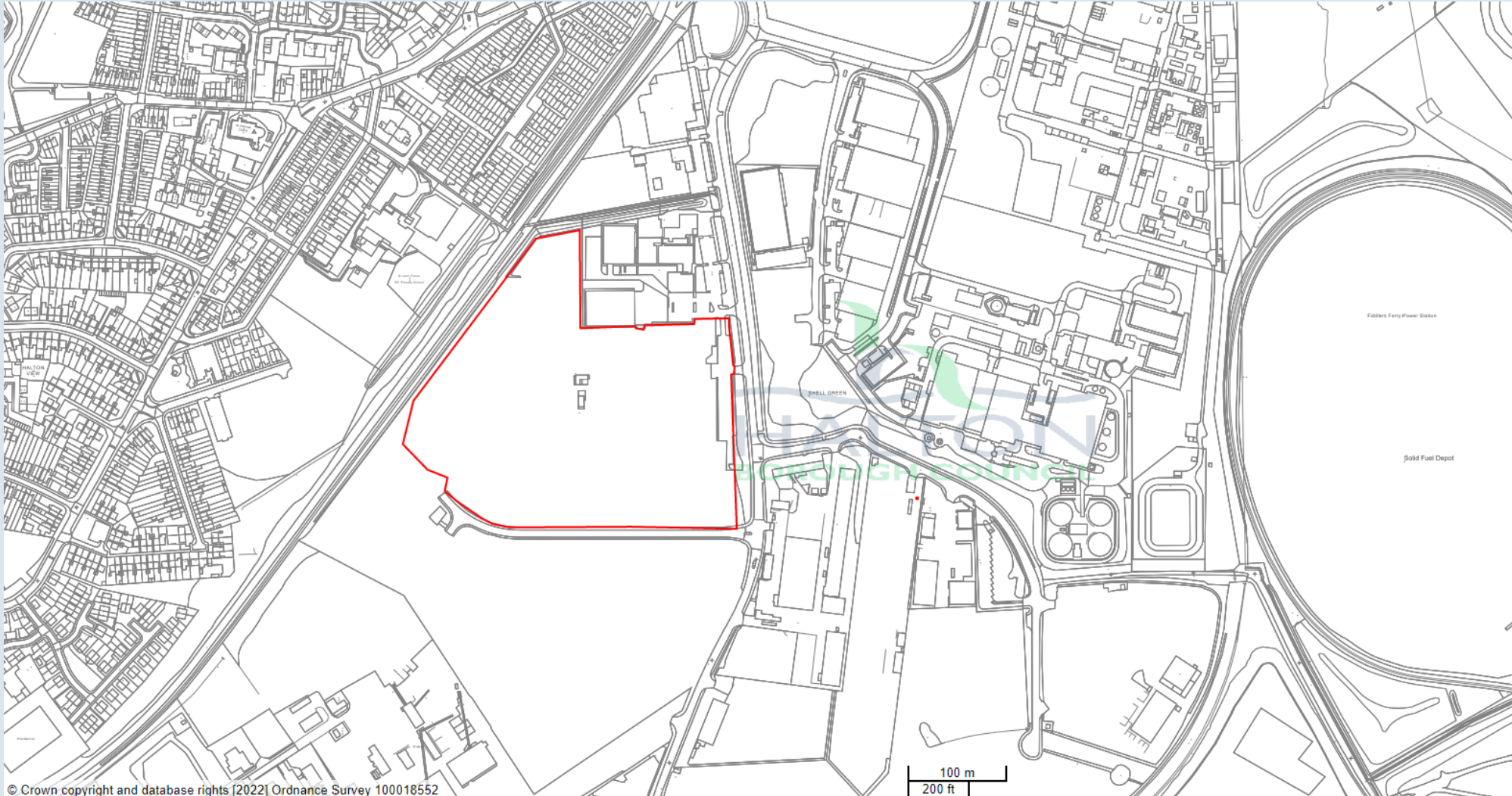
Title
PROPOSED TOP
VIEW

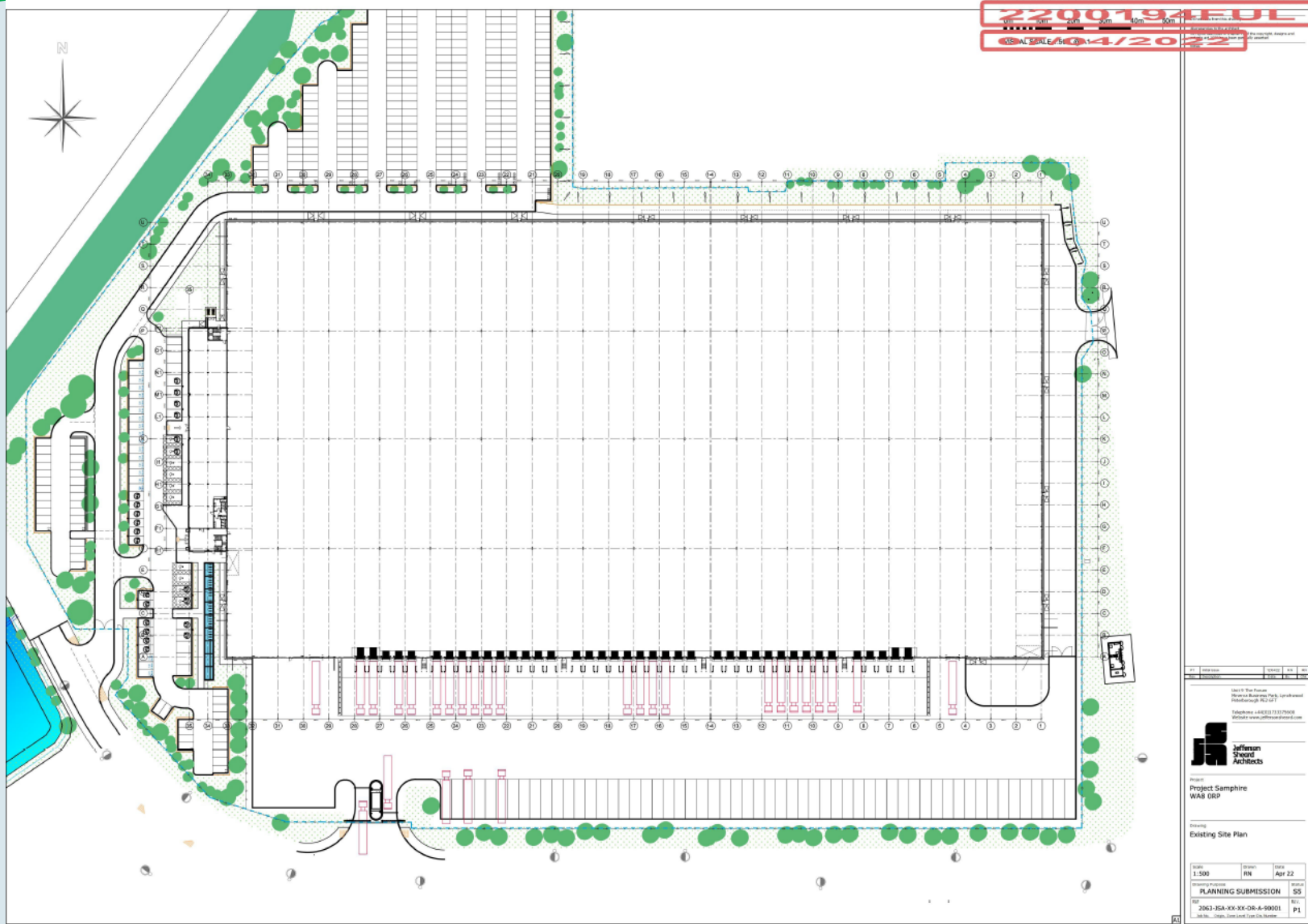
PROGRESS DRAWING

This drawing is not intended to be used for contract pricing or fabrication purposes. No contract is subject to change.

Drawn EJG/II	DRG no. 14,827
Date 13/05/22	6
Scale 1:200(A3)	Amendment L

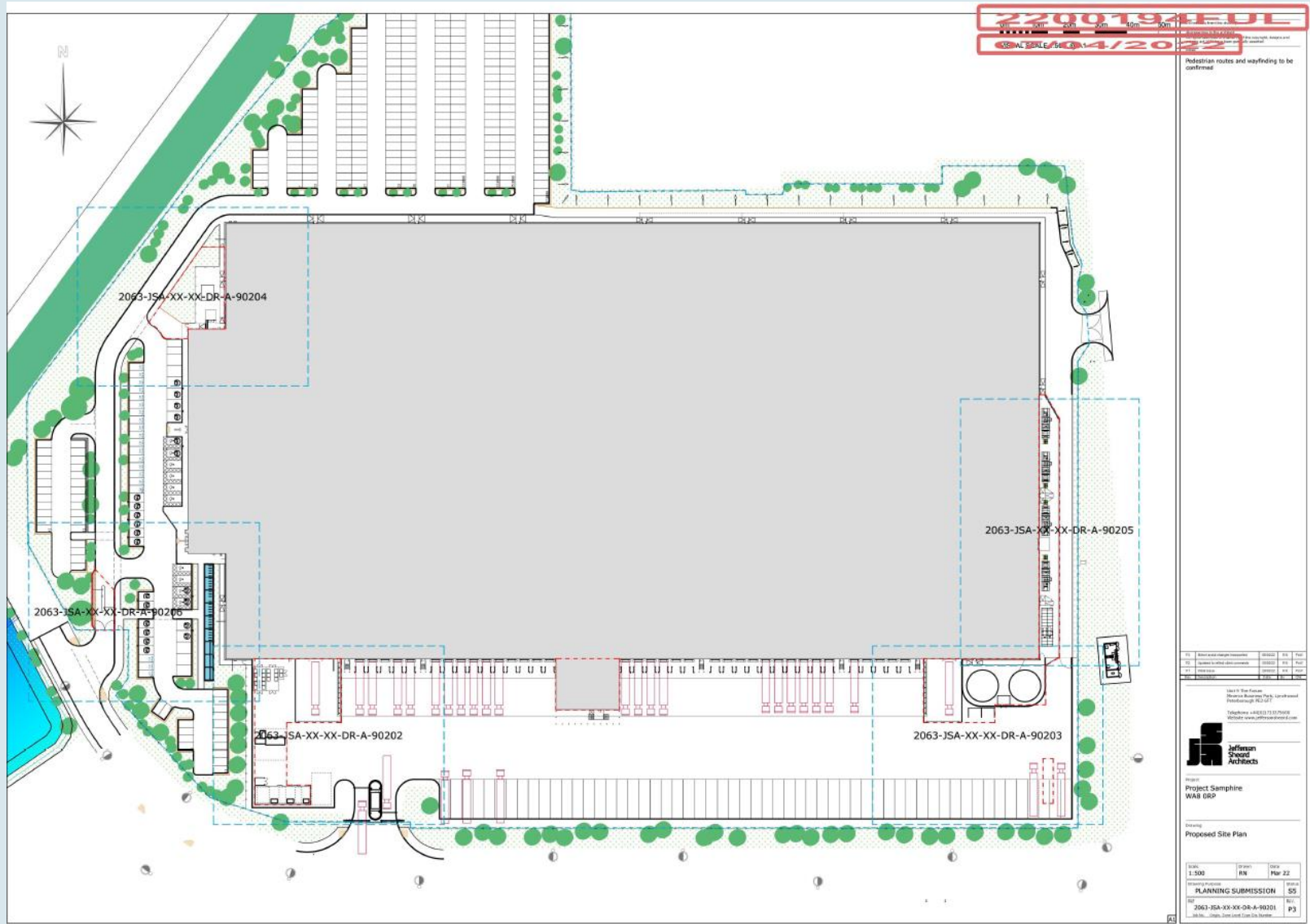


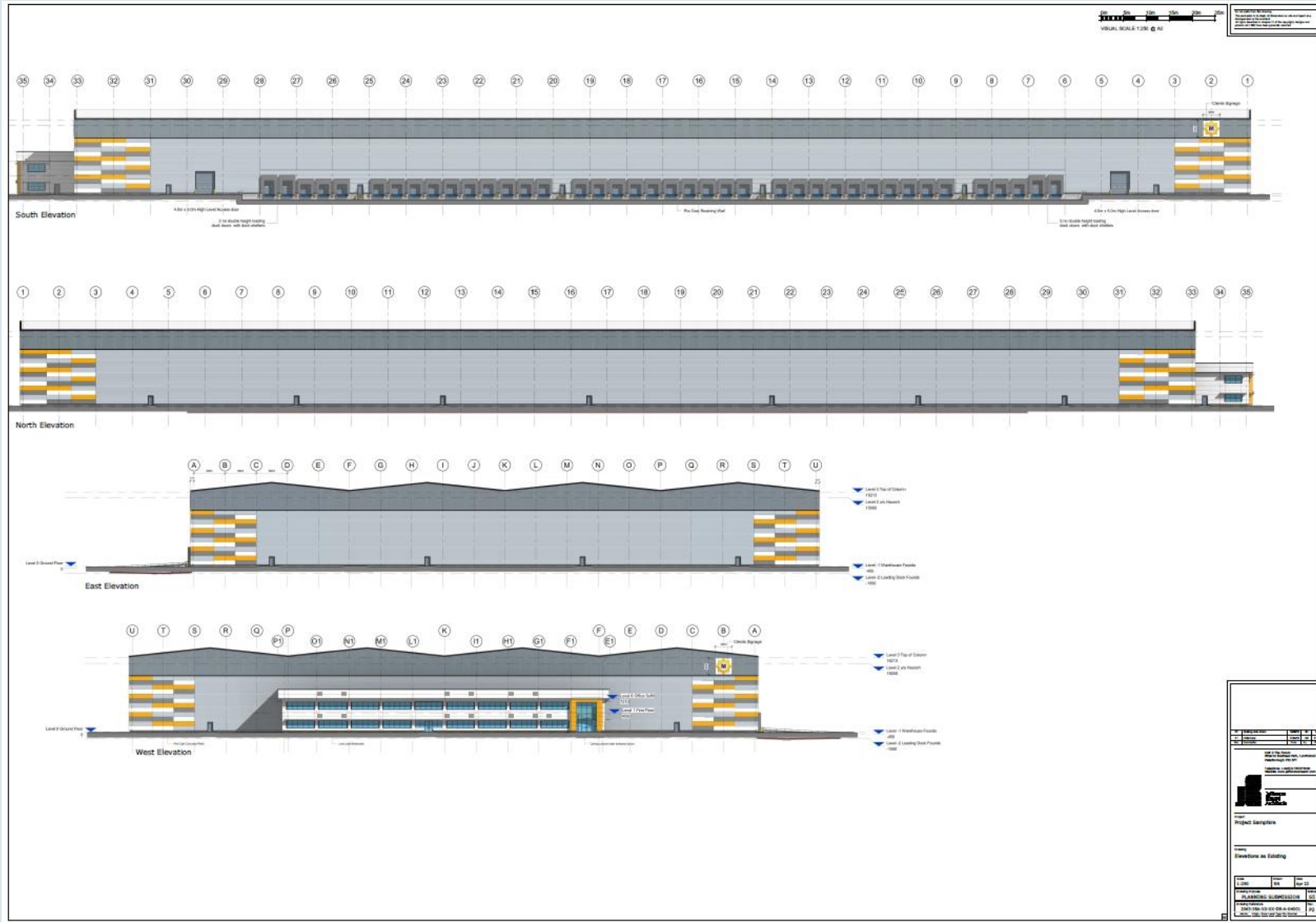


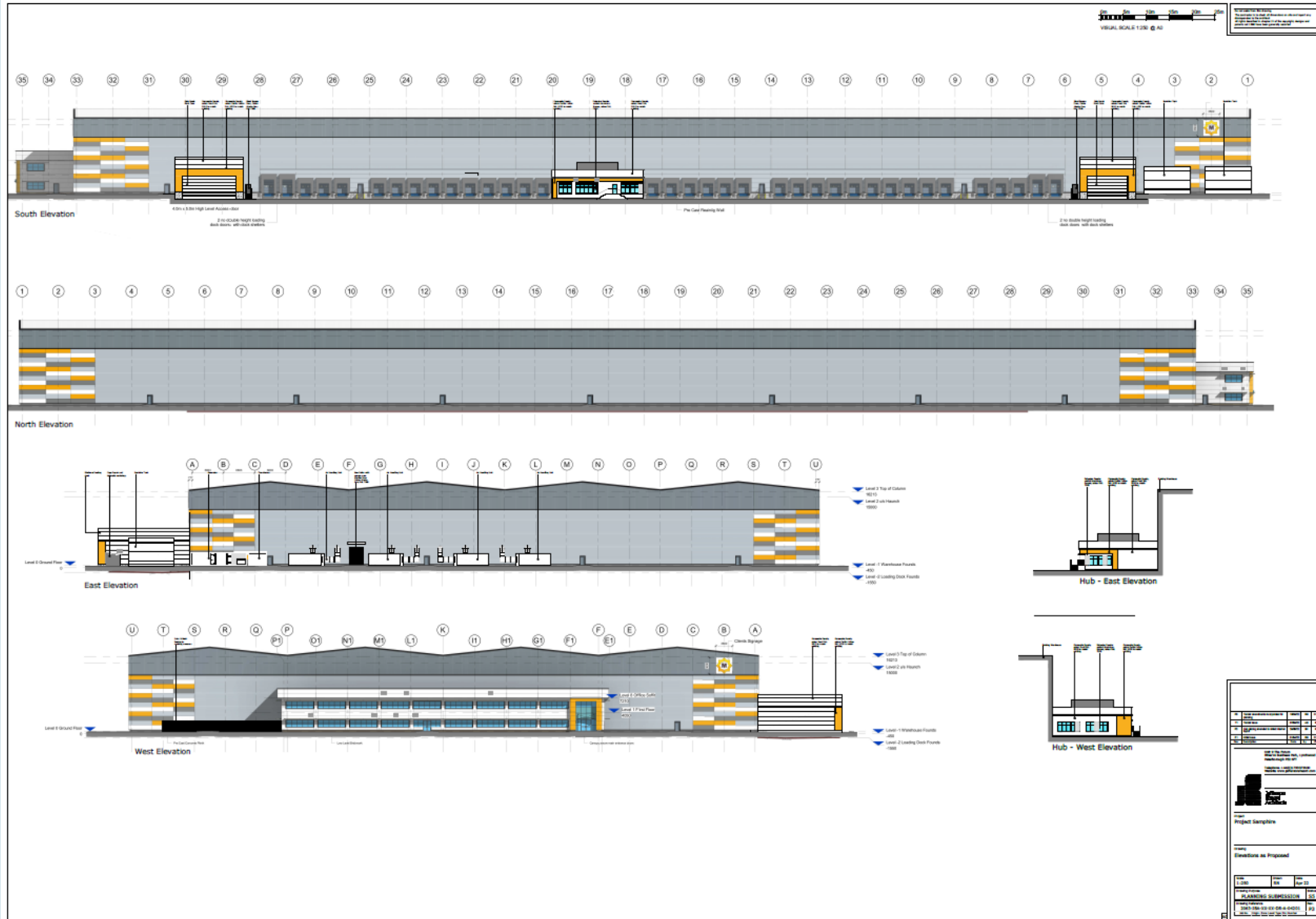


Application Number: 22/00194/FUL

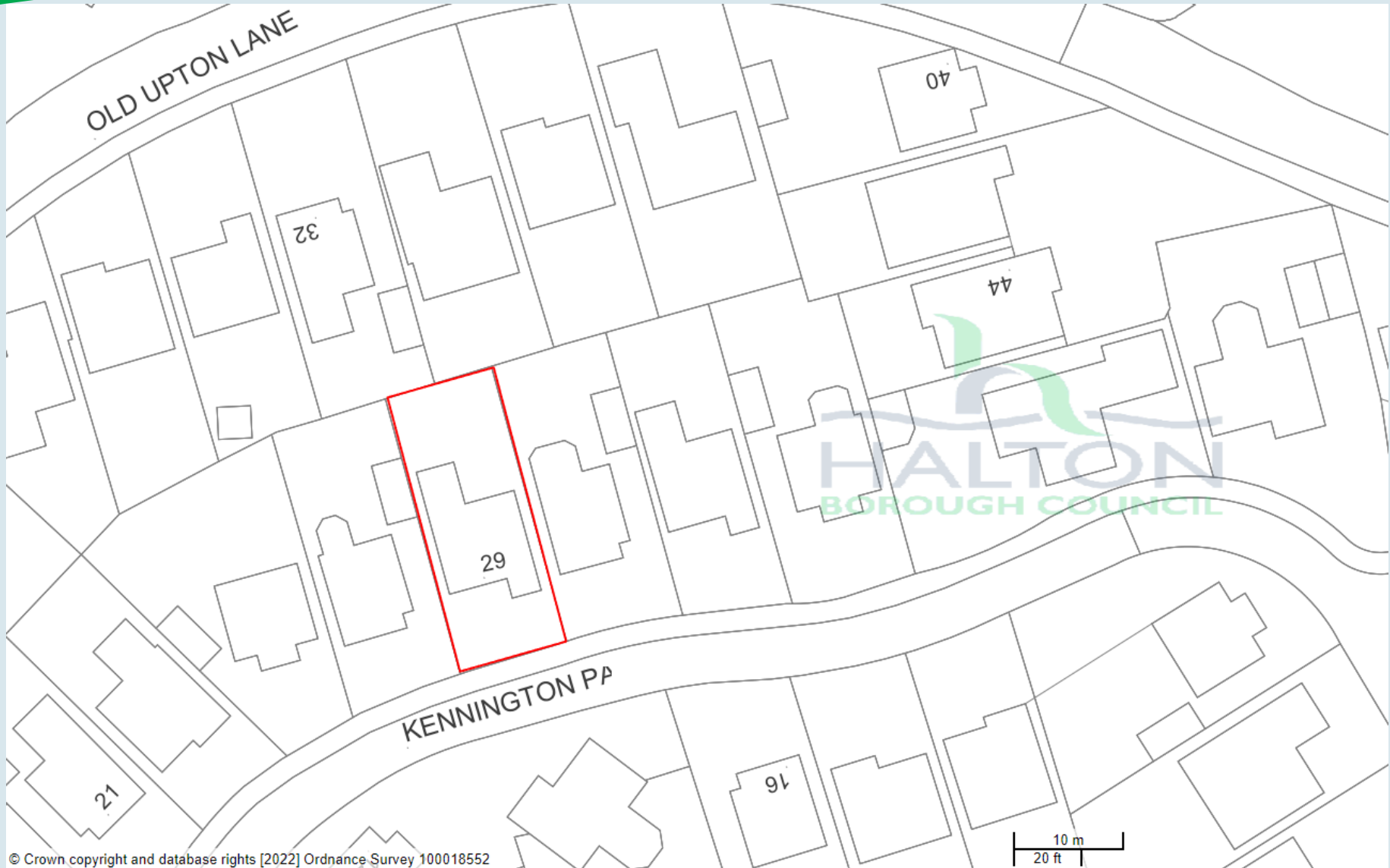
Plan 2B : Existing Site Plan











© Crown copyright and database rights [2022] Ordnance Survey 100018552



Copyright Bluesky

Application Number: 22/00207/COU

Plan 3B : Aerial Photograph