

Proposed Elevation 01 - 1:100

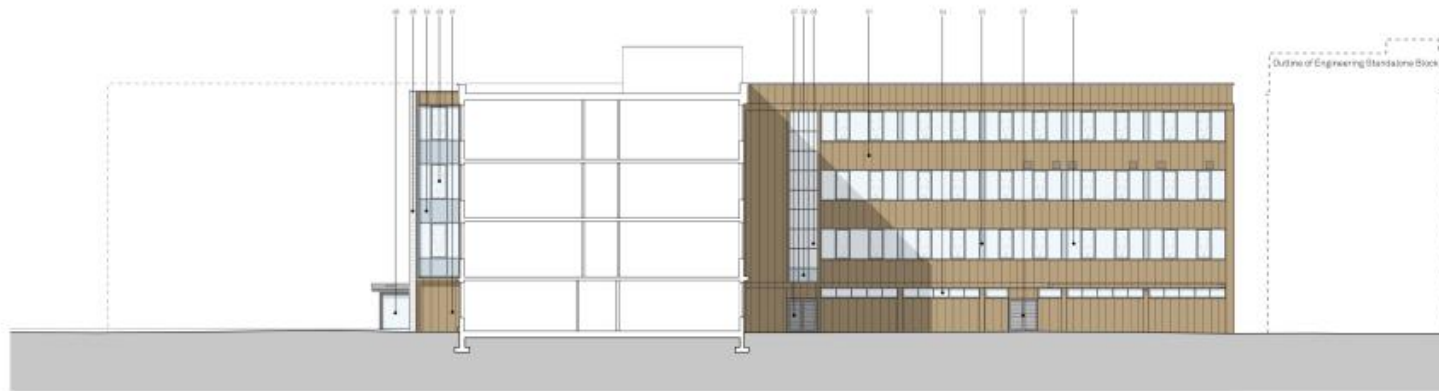








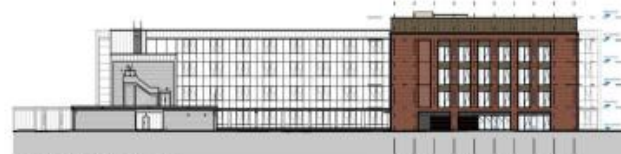
Proposed Elevation 05 - 1100



Proposed Elevation 06 - 1100

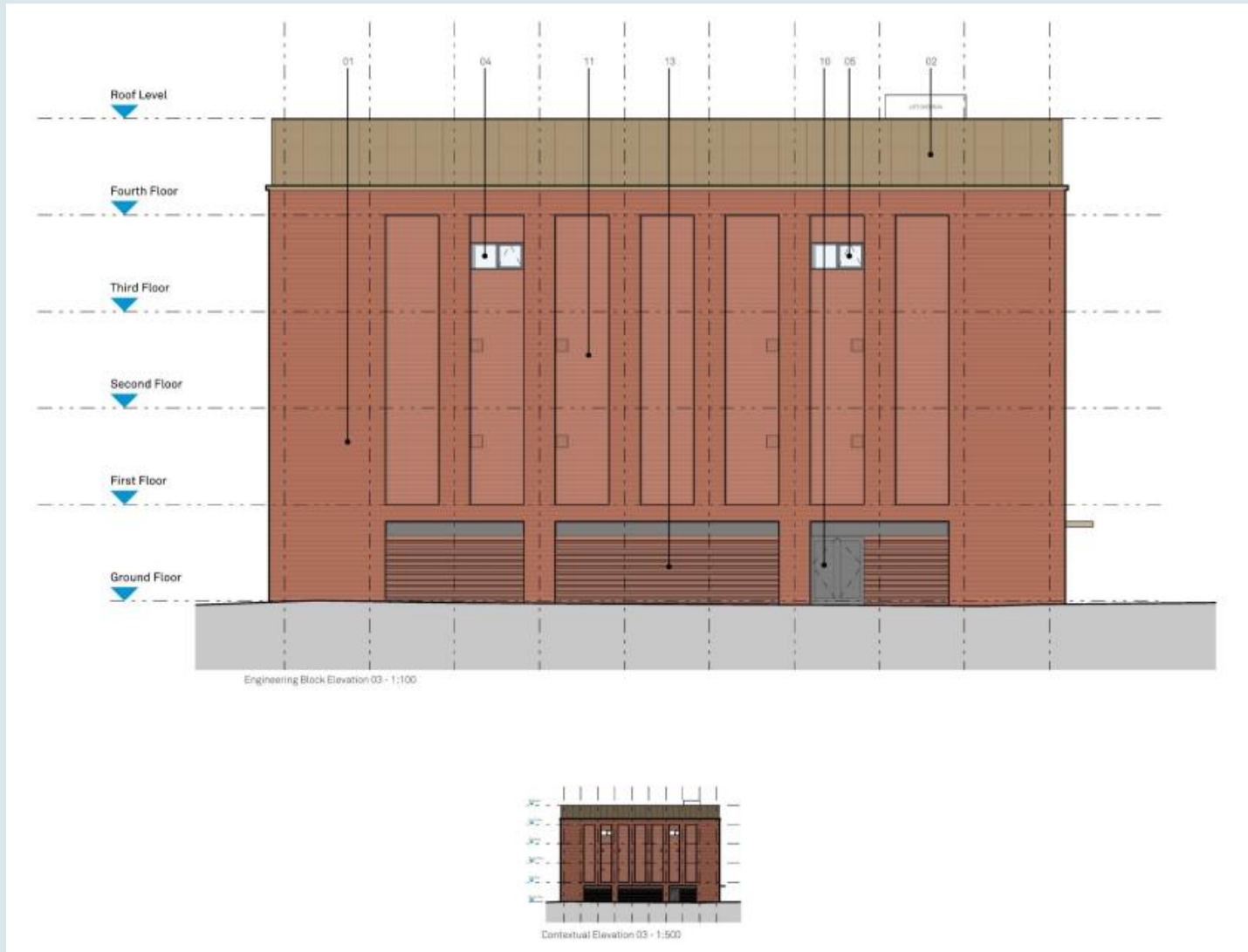


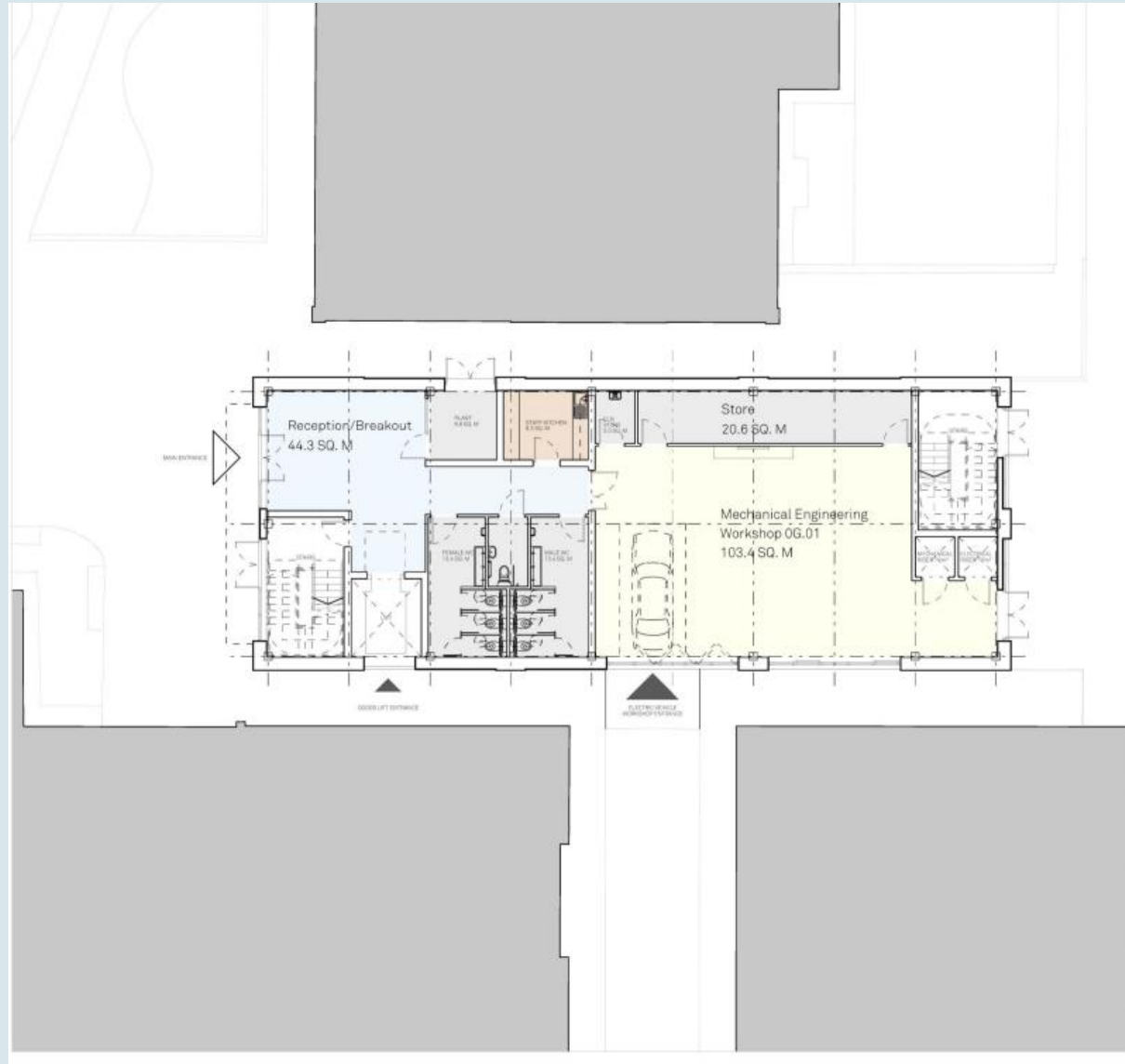
Engineering Block Elevation 01 - 1:100

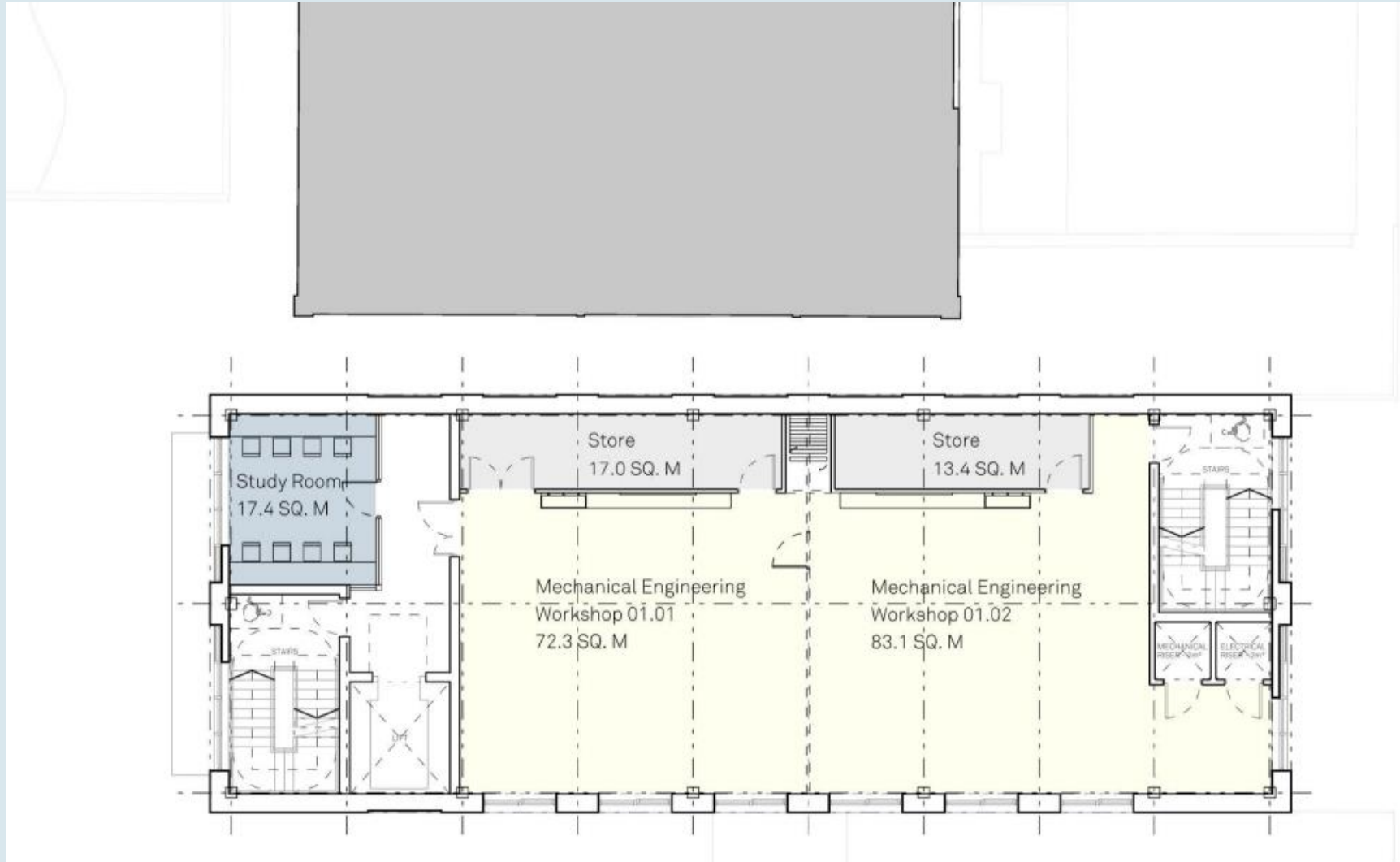


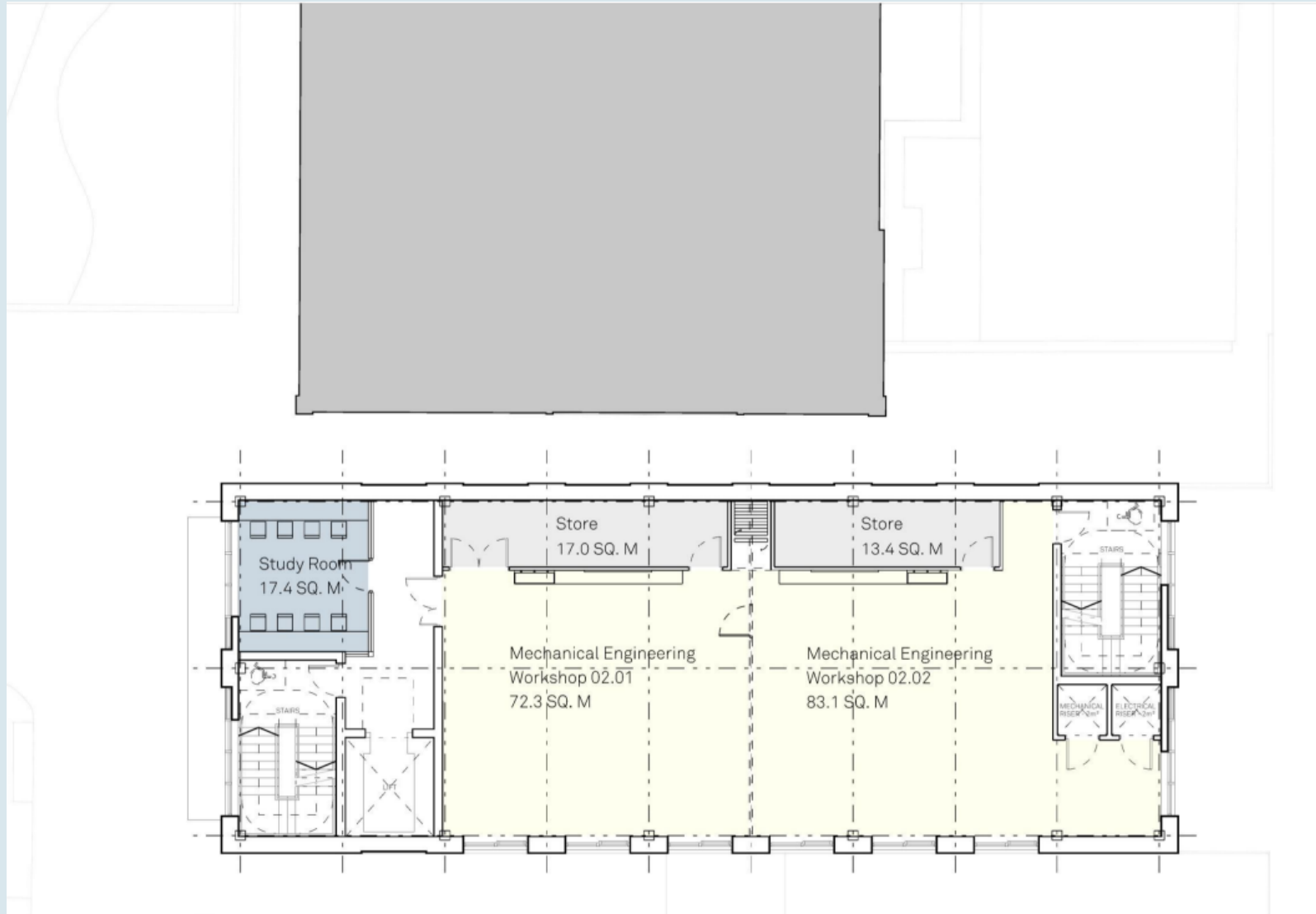
Contextual Elevation 01 - 1:500

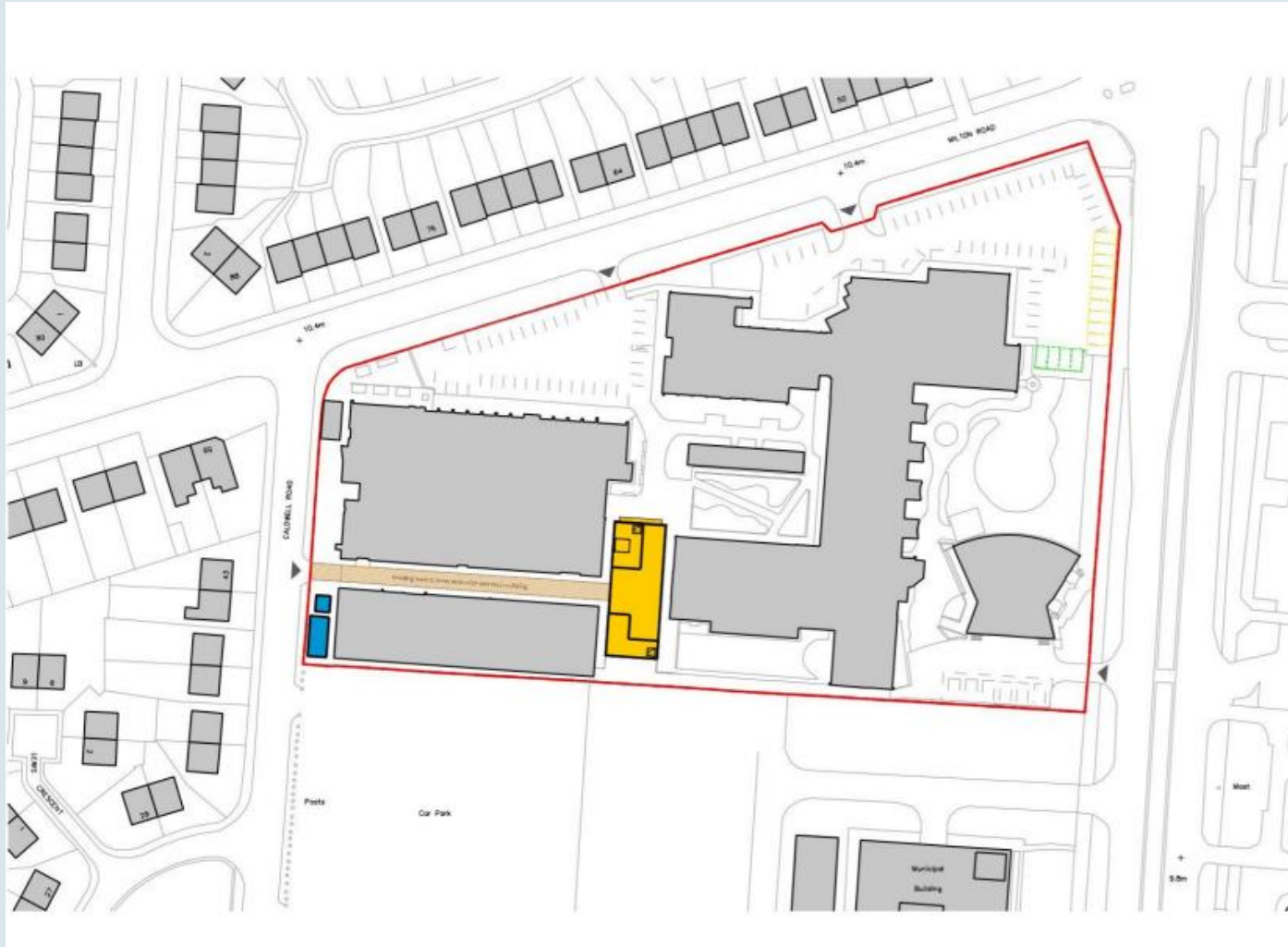




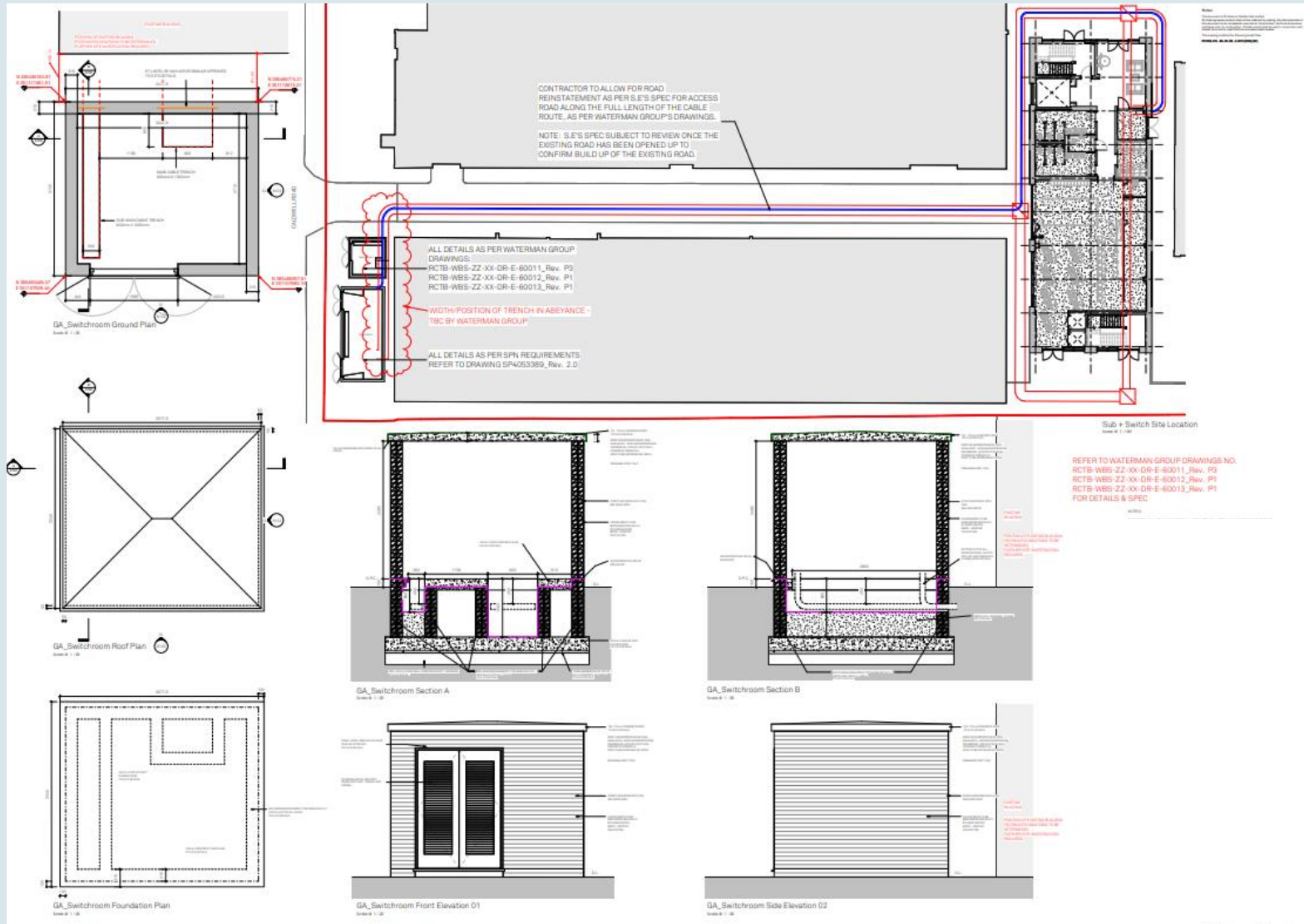


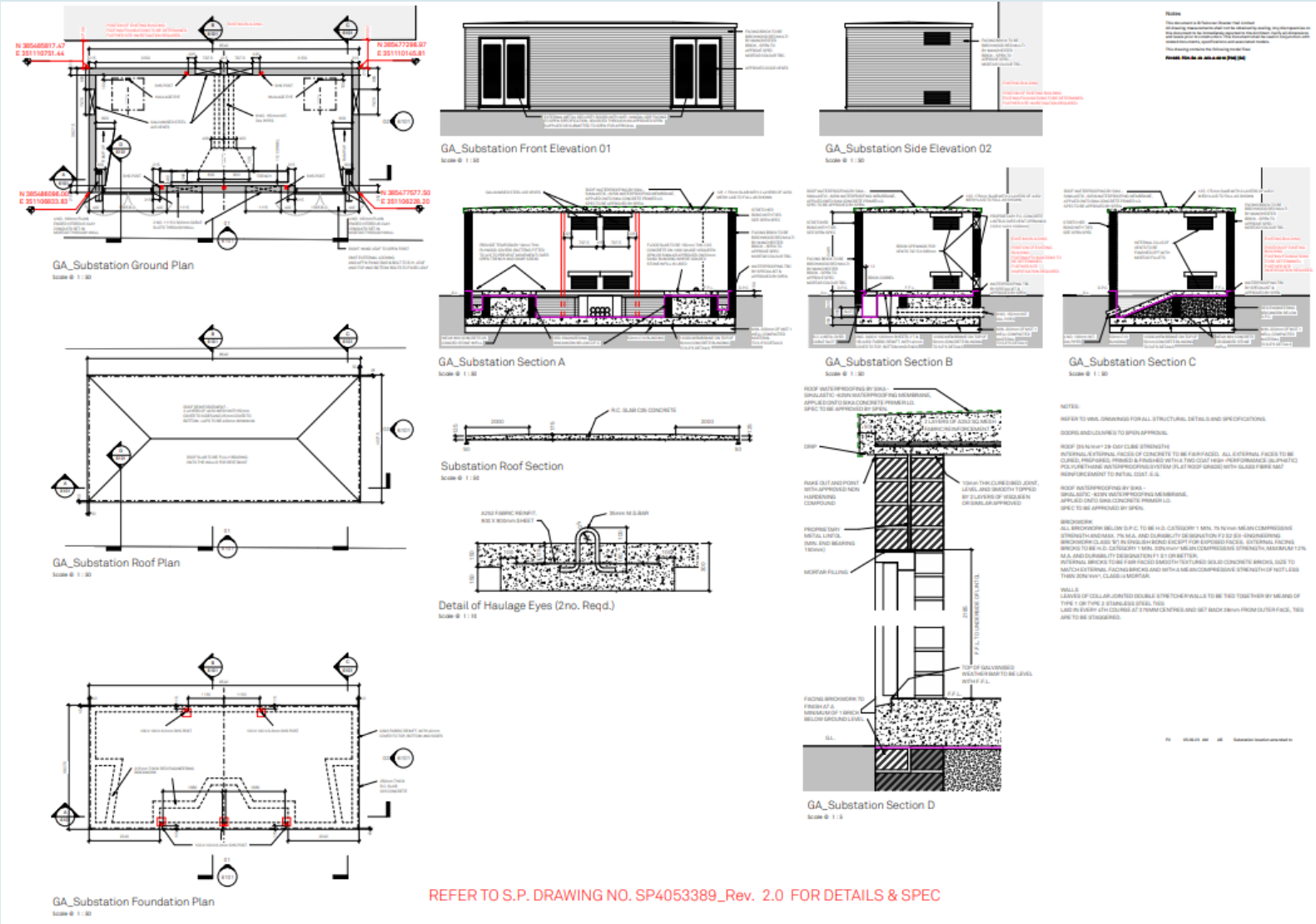






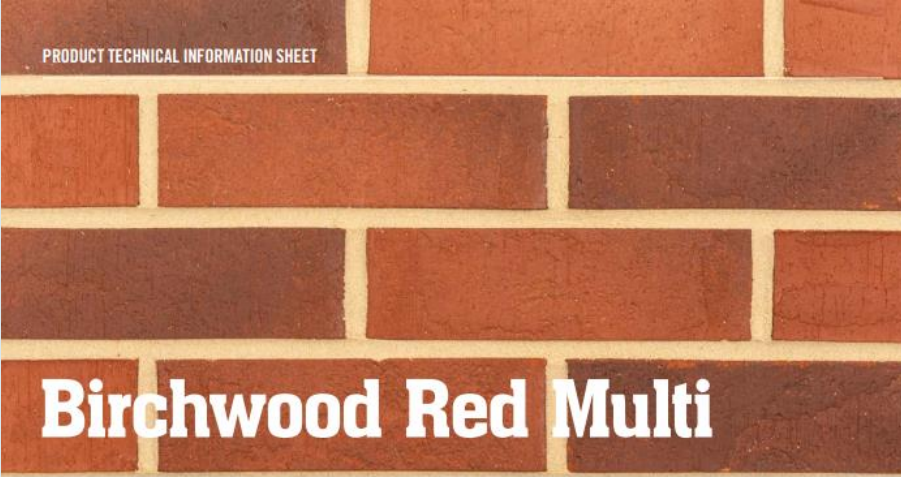






REFER TO S.P. DRAWING NO. SP4053389_Rev. 2.0 FOR DETAILS & SPEC

PRODUCT TECHNICAL INFORMATION SHEET



Birchwood Red Multi

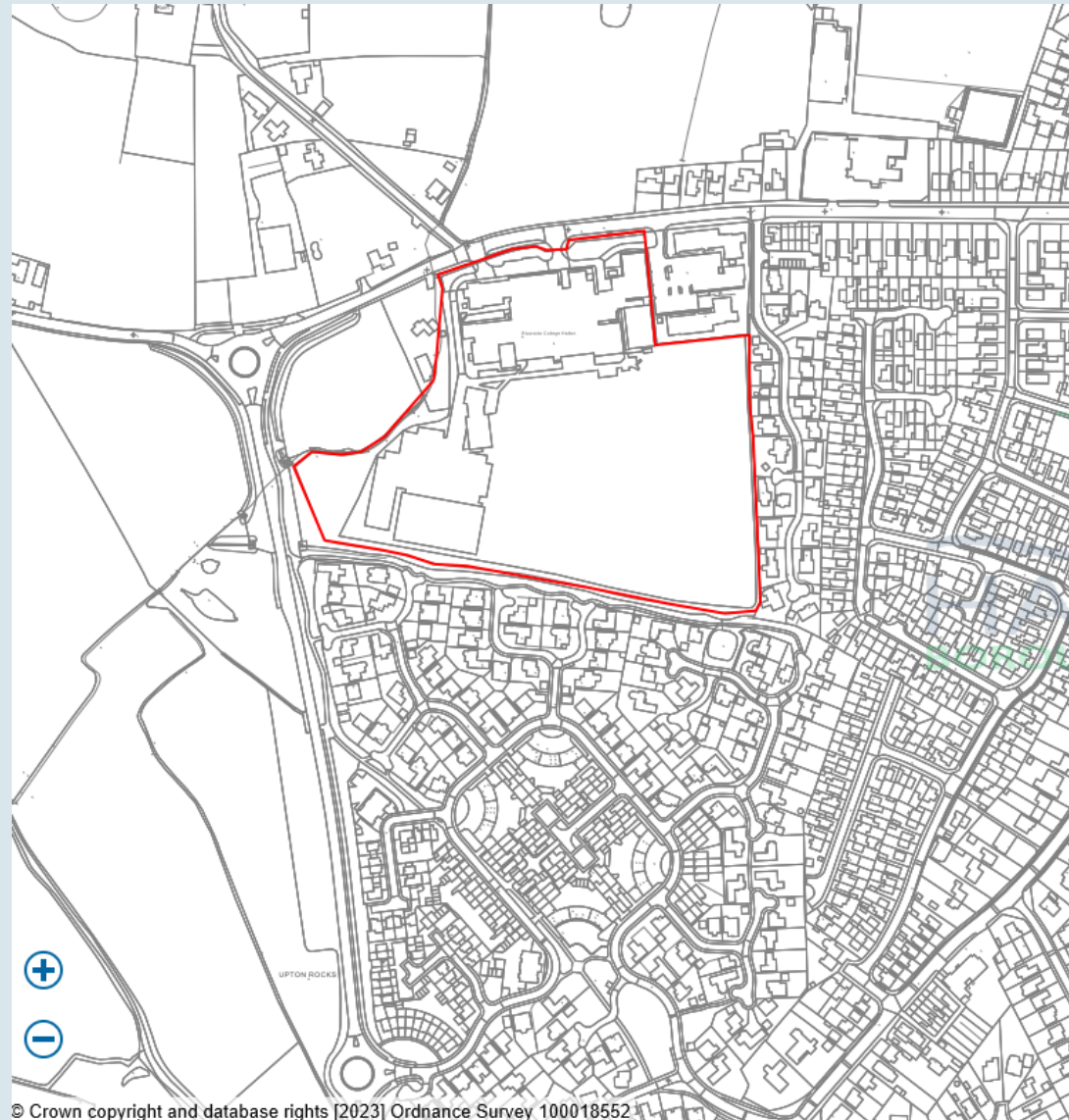
FIND OUT MORE ABOUT OUR BRICK RANGE

T: 0161 641 3579
W: www.manchesterbrick.com



PRODUCT TECHNICAL INFORMATION		TECHNICAL PROPERTIES TO BS EN 771-1	
MANCHESTER BRICK CODE	MBS02570	TYPE	Wirecut
MANUFACTURED TO	BS EN 771-1	GROSS DRY DENSITY (KG/M ³ /TOLERANCE)	2200 ±10%
CONFIGURATION	Vertically Perforated Voids	ACTIVE SOLUBLE SALTS	S2
COLOUR	Red Multi	COMPRESSIVE STRENGTH	≥75N/mm ²
APPEARANCE	Dragfaced/Textured	THERMAL CONDUCTIVITY*	0,36 W/m.k
SIZE Metric	215mm x 102,5mm x 65mm	SIZE TOLERANCE (MEAN/RANGE)	T2/R1
PACK SIZE	520	DURABILITY DESIGNATION	F2
INDIVIDUAL DRY BRICK WEIGHT	2.1kg	WATER ABSORPTION	<8%
		INITIAL RATE OF WATER ABSORPTION (KG/(M ² MIN))	≤0.8
		REACTION TO FIRE	A1





© Crown copyright and database rights [2023] Ordnance Survey 100018552

