



**Warrington and Halton
Teaching Hospitals**

NHS Foundation Trust



Halton Health Hub Update

Lucy Gardner, Director of Strategy and Partnerships

November 2023

Context

In November 2022, the Trust began seeing patients within the Halton Health Hub, a bespoke outpatient clinic facility located within Runcorn Shopping City

Phase 1 of the Hub was funded through contributions from the Trust, Liverpool City Region Town Centre Commission and supported by both Halton Borough Council and One Halton

The Hub currently houses 5 clinical examination rooms, 2 interview rooms, associated clinical support facilities, adult and paediatric waiting spaces, and modern staff amenities.

Additional clinical and support space is currently under construction as part of the Trust's Community Diagnostic Centre programme



Phase 1

Phase 1 of the project has now been in operation for almost 12 months and occupies 500m², roughly half of the unit's total floor space

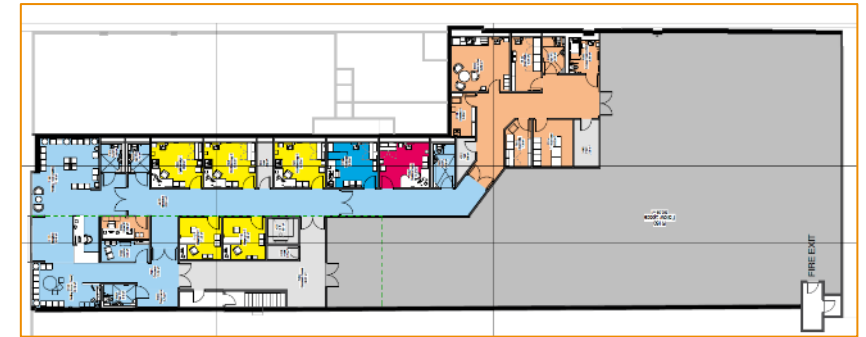
Services currently being delivered from the hub:

- Audiology (WHH)
- MSKCATS (WHH)
- Optometry (WHH)
- Orthoptics (WHH)
- Dietetics (WHH)
- GP Extended Access (Runcorn GP Federation)
- Smoking Cessation (Halton Borough Council)
- Tier 4 Weight Management (Halton Borough Council)

In addition, an Active Travel Service pilot funded through Liverpool City Region and operated by Wellbeing Enterprises will commence from October 2023

Between January 2023 and March 2023, the Hub hosted additional community health services:

- Runcorn Acute Respiratory Hub (Runcorn GP Federation)
- Covid / flu vaccination service (Halton Borough Council / NHS Cheshire & Merseyside)



- In the first 10 months, the Hub has provided services to more than 3,000 patients across 3 providers.
- The Hub has attracted an estimated 5,000 additional visitors to Shopping City since its opening, including staff, carers and visitors, and contributing to the regeneration of Halton Lea
- £970k investment for Phase 1 design, development and equipment

Phase 1 – Patient Feedback

Patient feedback since opening the Hub has been overwhelmingly positive, focussing on the clinical and waiting environment, and the ease of access to the Hub.

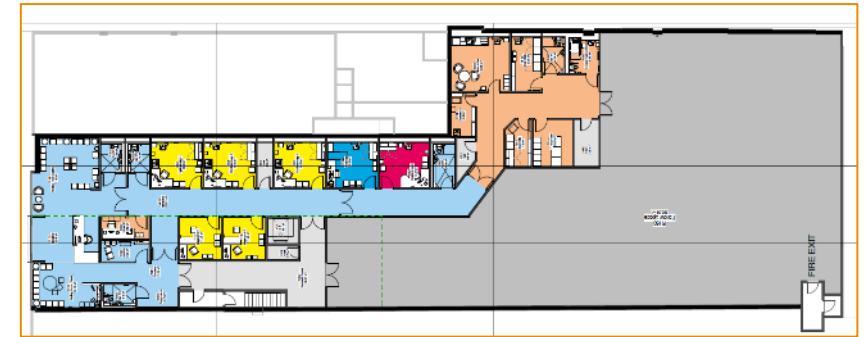
Some excerpts of feedback from patients, carers and staff are included below:

- *“The location of the centre is ideal for patients and staff, no car park costs and plenty of car park spaces. Patients feel happy and more comfortable. The environment is clinical and well maintained.”*

- *“The appointment was not at my normal GP practice but in Runcorn shopping city. It looked brand-new and clean and was easy to get to via bus.”*

- *“When we arrived there was toys and games for my little boy which kept him entertained even though we where not waiting long to be seen.”*

- *“The Location is handy to get to by car or on bus. When on reception a lot of people passing by come in enquiring what it is and all seem very intrigued. The staff amenities on site really make you feel comfortable.”*



Phase 2 – Community Diagnostic Centre

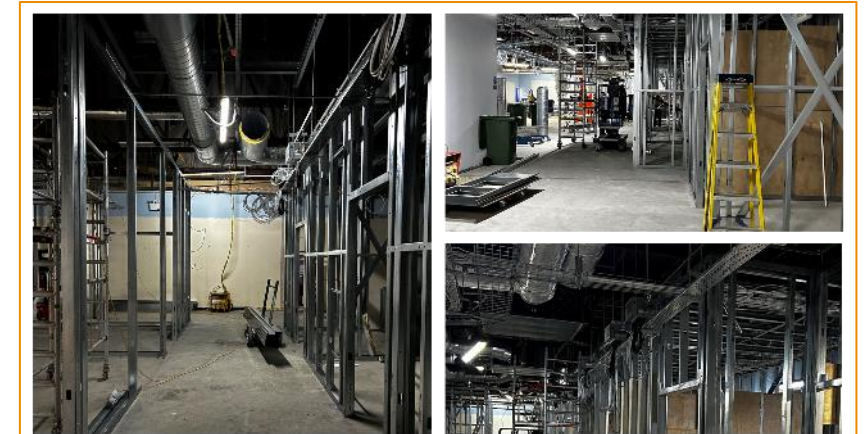
Phase 2 is planned to complete in December 2023 and will occupy 290m² of the unit, around 1/3 of the total floorspace.

Services within Phase 2 of the project include:

- Audiology
- Sleep Studies
- Ultrasound
- Respiratory
- Phlebotomy

The Community Diagnostic Hub will provide additional capacity for our residents, improving access to diagnostic services within Halton, as well as providing enhanced access to patients across Cheshire and Merseyside

Phase 2 is fully funded as part of a nationwide NHS England programme of work



- £2,843k investment for Phase 2 design, development and equipment

Phase 3 and Future Opportunities

Following completion of the Hub's Community Diagnostic Centre, the facility has potential to accommodate additional services to operate from the Hub

This could be on a sessional basis, making use of available slots in the current timetable for the bookable rooms within Phase 1 and / or Phase 2

Alternatively, there is an opportunity to develop a bespoke space within the remaining fallow space at the rear of the unit

There is 200m² available for development, at an approximate capital cost of £1,150k (based on clinical space requirements)





**Warrington and Halton
Teaching Hospitals**
NHS Foundation Trust

Thank you and questions

For further information, please contact the Trust's Strategy Team at:
whh.strategyteam@nhs.net

